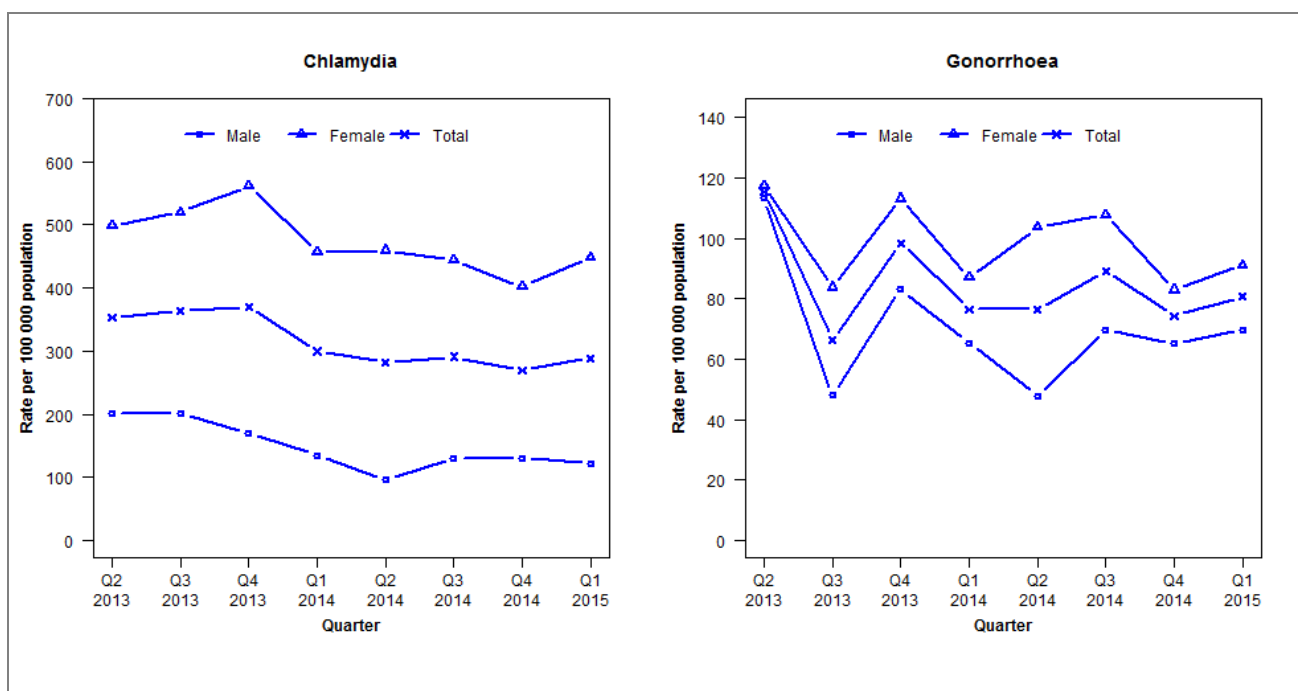


## Laboratory surveillance of chlamydia and gonorrhoea: January - March 2015

### Quarterly chlamydia and gonorrhoea rates (female, male and total population), Apr 2013 to Mar 2015



Denominator = Statistics New Zealand mid-year population estimates

Note: Data processing methods allow for exclusion of repeat tests.

### Number of lab confirmed chlamydia cases (female, male and total population) and number of tests per 100 000 population, April 2013 to March 2015

	Q2 2013	Q3 2013	Q4 2013	Q1 2014	Q2 2014	Q3 2014	Q4 2014	Q1 2015
<b>Number of lab-confirmed cases<sup>1</sup></b>	165	170	173	141	133	137	127	136
<i>Female</i>	119	124	134	110	111	107	97	108
<i>Male</i>	46	46	39	31	22	30	30	28
<b>Tests per 100 000 population<sup>2</sup></b>	2420	2525	2480	2255	2205	2349	2134	2083

<sup>1</sup>Total includes cases where sex is not reported

<sup>2</sup>Denominator = Statistics New Zealand mid-year population estimates

### Number of lab confirmed gonorrhoea cases (female, male and total population) and number of tests per 100 000 population, April 2013 to March 2015

	Q2 2013	Q3 2013	Q4 2013	Q1 2014	Q2 2014	Q3 2014	Q4 2014	Q1 2015
<b>Number of lab-confirmed cases<sup>1</sup></b>	54	31	46	36	36	42	35	38
<i>Female</i>	28	20	27	21	25	26	20	22
<i>Male</i>	26	11	19	15	11	16	15	16
<b>Tests per 100 000 population<sup>2</sup></b>	2390	2499	2354	2260	2268	2383	2224	2202

<sup>1</sup>Total includes cases where sex is not reported

<sup>2</sup>Denominator = Statistics New Zealand mid-year population estimates