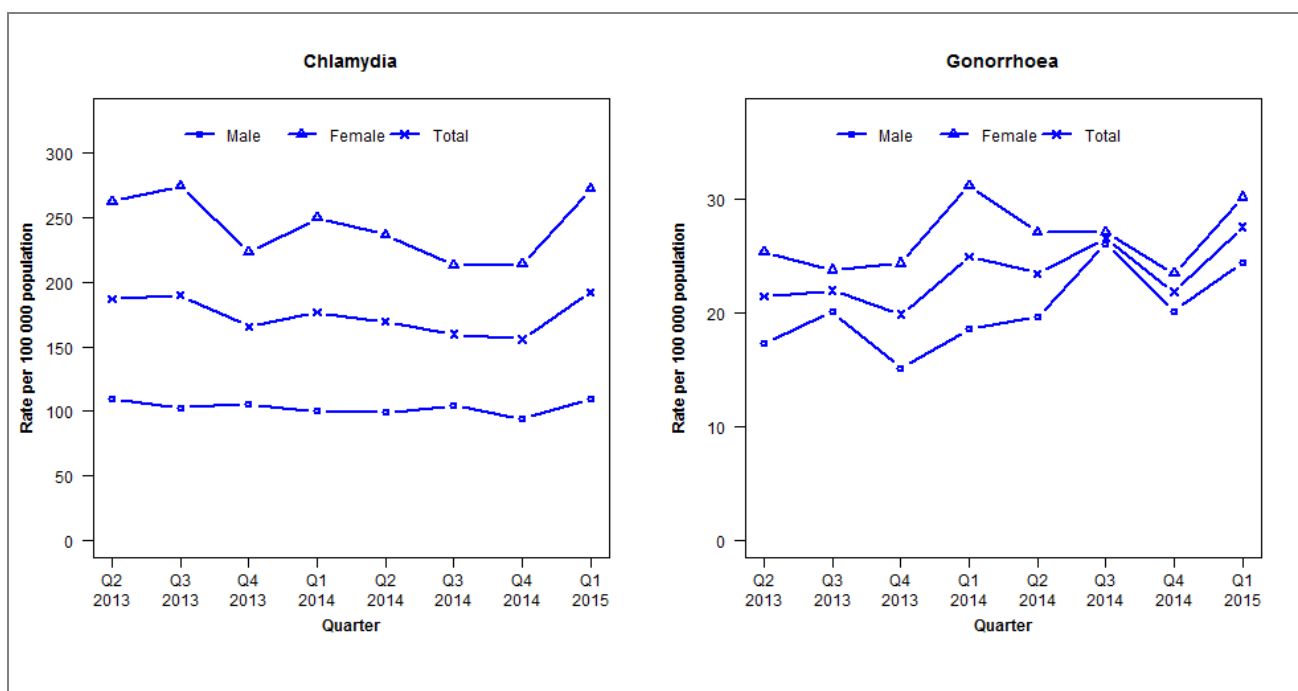


## Laboratory surveillance of chlamydia and gonorrhoea: January - March 2015

Quarterly chlamydia and gonorrhoea rates (female, male and total population), Apr 2013 to Mar 2015



Denominator = Statistics New Zealand mid-year population estimates

Note: Data processing methods allow for exclusion of repeat tests. Additional 2014 data received has been included and may have impacted slightly on the counts and rates produced.

### Number of lab confirmed chlamydia cases (female, male and total population) and number of tests per 100 000 population, April 2013 to March 2015

	Q2 2013	Q3 2013	Q4 2013	Q1 2014	Q2 2014	Q3 2014	Q4 2014	Q1 2015
<b>Number of lab-confirmed cases<sup>1</sup></b>	697	707	617	677	649	612	597	737
<i>Female</i>	495	518	422	488	463	416	419	532
<i>Male</i>	202	189	194	188	186	196	177	205
<b>Tests per 100 000 population<sup>2</sup></b>	2000	2165	1960	2025	2044	2072	1956	2194

<sup>1</sup>Total includes cases where sex is not reported

<sup>2</sup>Denominator = Statistics New Zealand mid-year population estimates

### Number of lab confirmed gonorrhoea cases (female, male and total population) and number of tests per 100 000 population, April 2013 to March 2015

	Q2 2013	Q3 2013	Q4 2013	Q1 2014	Q2 2014	Q3 2014	Q4 2014	Q1 2015
<b>Number of lab-confirmed cases<sup>1</sup></b>	80	82	74	96	90	102	84	106
<i>Female</i>	48	45	46	61	53	53	46	59
<i>Male</i>	32	37	28	35	37	49	38	46
<b>Tests per 100 000 population<sup>2</sup></b>	2580	2900	2508	2502	2515	2525	2401	2620

<sup>1</sup>Total includes cases where sex is not reported

<sup>2</sup>Denominator = Statistics New Zealand mid-year population estimates