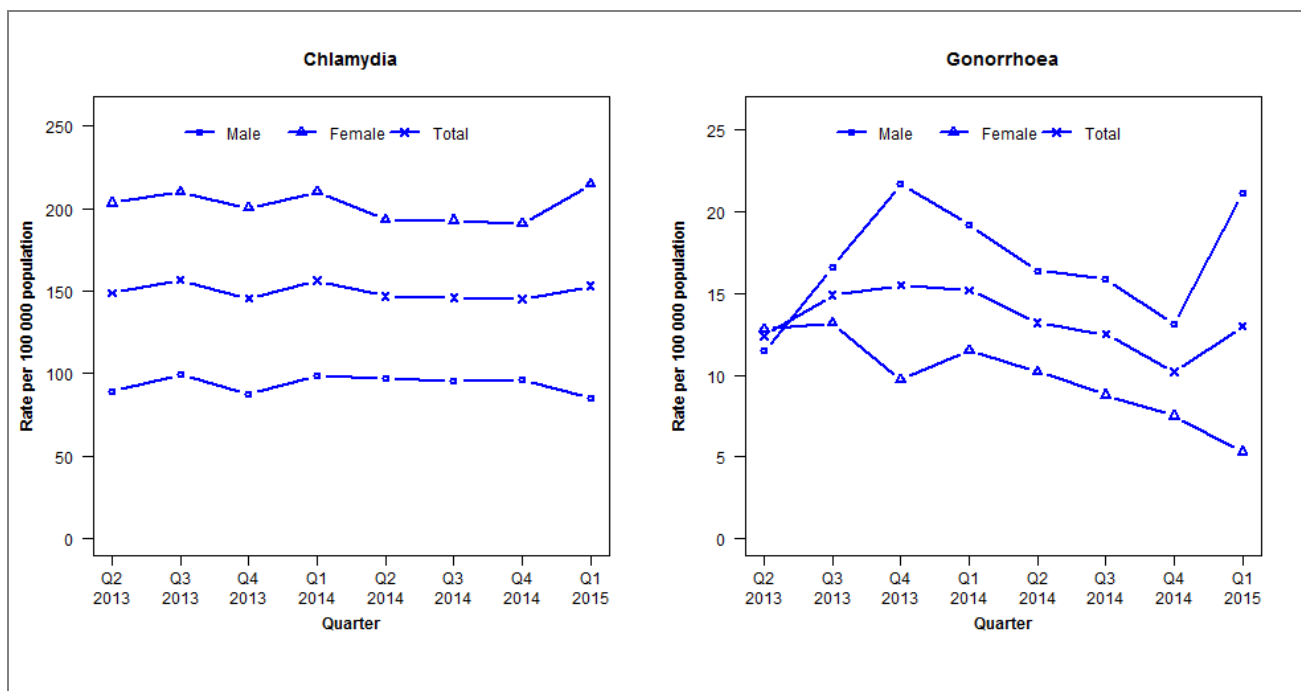


## Laboratory surveillance of chlamydia and gonorrhoea: January - March 2015

Quarterly chlamydia and gonorrhoea rates (female, male and total population), Apr 2013 to Mar 2015



Denominator = Statistics New Zealand mid-year population estimates

Note: Data processing methods allow for exclusion of repeat tests.

## Number of lab confirmed chlamydia cases (female, male and total population) and number of tests per 100 000 population, April 2013 to March 2015

	Q2 2013	Q3 2013	Q4 2013	Q1 2014	Q2 2014	Q3 2014	Q4 2014	Q1 2015
<b>Number of lab-confirmed cases<sup>1</sup></b>	661	695	646	688	646	642	638	673
<i>Female</i>	461	476	454	475	437	436	431	486
<i>Male</i>	193	215	189	211	207	204	205	182
<b>Tests per 100 000 population<sup>2</sup></b>	2269	2437	2323	2446	2445	2538	2387	2543

<sup>1</sup>Total includes cases where sex is not reported<sup>2</sup>Denominator = Statistics New Zealand mid-year population estimates

## Number of lab confirmed gonorrhoea cases (female, male and total population) and number of tests per 100 000 population, April 2013 to March 2015

	Q2 2013	Q3 2013	Q4 2013	Q1 2014	Q2 2014	Q3 2014	Q4 2014	Q1 2015
<b>Number of lab-confirmed cases<sup>1</sup></b>	55	66	69	67	58	55	45	57
<i>Female</i>	29	30	22	26	23	20	17	12
<i>Male</i>	25	36	47	41	35	34	28	45
<b>Tests per 100 000 population<sup>2</sup></b>	2264	2418	2231	2425	2433	2506	2350	2544

<sup>1</sup>Total includes cases where sex is not reported<sup>2</sup>Denominator = Statistics New Zealand mid-year population estimates