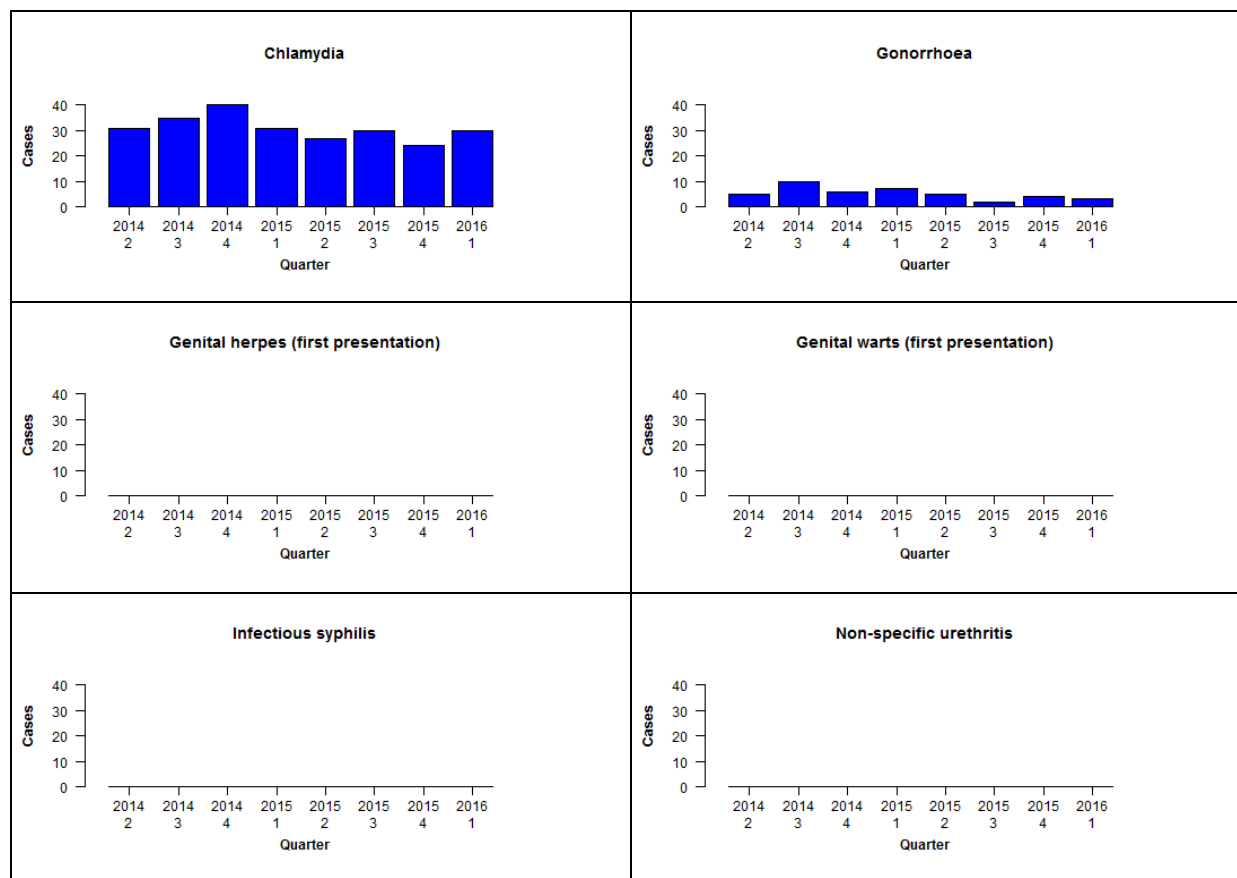


## Sexual health clinic (SHC) surveillance of STIs: January-March 2016

### Quarterly case counts in participating SHCs by disease, April 2014 to March 2016



No cases of chancroid, granuloma inguinale or lymphogranuloma venereum were reported during the last quarter

Note: Quarter 4 2015 numbers are slightly lower than usual as Gisborne SHC had a change in computer systems during this quarter.

### Quarterly case counts in participating SHCs by disease, April 2014 to March 2016

	Q2 2014	Q3 2014	Q4 2014	Q1 2015	Q2 2015	Q3 2015	Q4 2015	Q1 2016
Chlamydia	31	35	40	31	27	30	24	30
Gonorrhoea	5	10	6	7	5	2	4	3
Genital herpes (first presentation)	0	0	0	0	0	0	0	0
Genital warts (first presentation)	0	0	0	0	0	0	0	0
Infectious syphilis	0	0	0	0	0	0	0	0
Non-specific urethritis	0	0	0	0	0	0	0	0