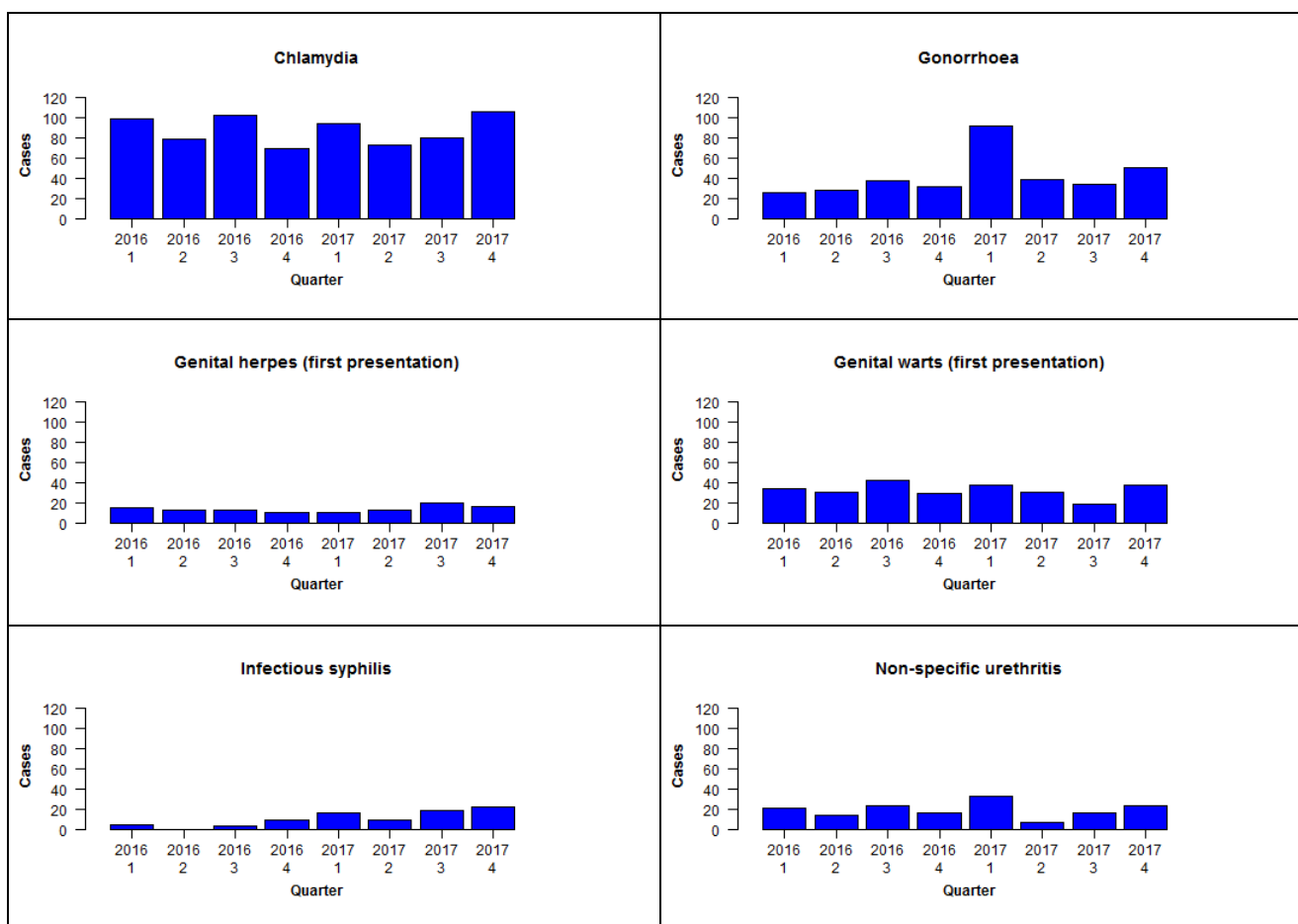


## Sexual health clinic (SHC) surveillance of STIs: October-December 2017

### Quarterly case counts in participating SHCs by disease, January 2016 to December 2017



One case of Lymphogranuloma venereum was reported during the last quarter.

### Quarterly case counts in participating SHCs by disease, January 2016 to December 2017

	Q1 2016	Q2 2016	Q3 2016	Q4 2016	Q1 2017	Q2 2017	Q3 2017	Q4 2017
Chlamydia	99	79	102	69	94	73	80	105
Gonorrhoea	26	28	38	32	92	39	34	51
Genital herpes (first presentation)	15	13	13	11	11	13	20	16
Genital warts (first presentation)	34	30	42	29	38	30	19	38
Infectious syphilis	5	0	3	10	17	10	19	22
Non-specific urethritis	21	14	24	17	33	7	16	24