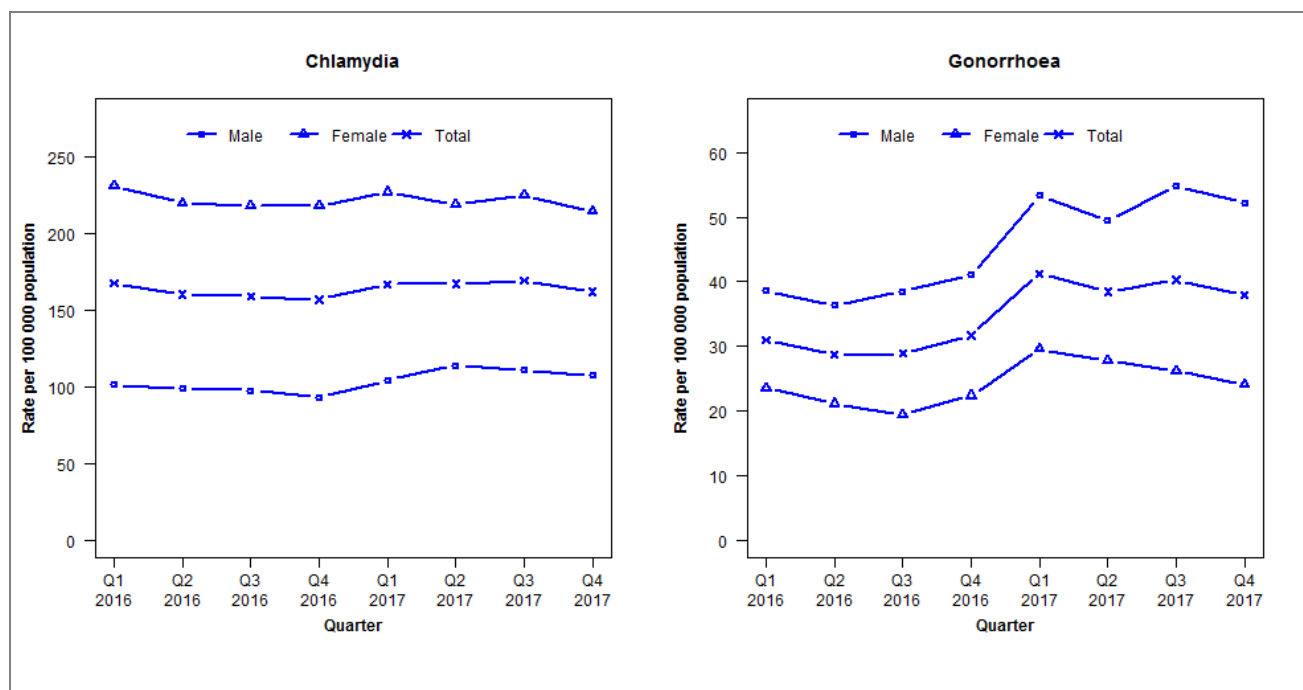


## Laboratory surveillance of chlamydia and gonorrhoea: October - December 2017

Quarterly chlamydia and gonorrhoea rates (male, female and total<sup>1</sup> population), January 2016 to December 2017<sup>1</sup>Total includes cases where sex is not reported

Denominator = Statistics New Zealand mid-year population estimates

Note: Data processing methods allow for exclusion of repeat tests.

## Number of lab confirmed chlamydia cases (male, female and total population) and number of tests per 100 000 population, January 2015 to December 2017

	Q1 2016	Q2 2016	Q3 2016	Q4 2016	Q1 2017	Q2 2017	Q3 2017	Q4 2017
<b>Number of lab-confirmed cases<sup>1</sup></b>	2733	2616	2591	2558	2722	2729	2759	2641
<b>Female</b>	1913	1820	1804	1804	1880	1812	1862	1775
<b>Male</b>	816	795	784	750	839	917	890	864
<b>Tests per 100 000 population<sup>2</sup></b>	2701	2537	2447	2249	2460	2417	2502	2428

<sup>1</sup>Total includes cases where sex is not reported<sup>2</sup>Denominator = Statistics New Zealand mid-year population estimates

## Number of lab confirmed gonorrhoea cases (female, male and total population) and number of tests per 100 000 population, January 2015 to December 2017

	Q1 2016	Q2 2016	Q3 2016	Q4 2016	Q1 2017	Q2 2017	Q3 2017	Q4 2017
<b>Number of lab-confirmed cases<sup>1</sup></b>	506	468	471	517	673	628	657	619
<b>Female</b>	196	176	162	186	245	230	217	200
<b>Male</b>	310	292	309	330	428	397	440	419
<b>Tests per 100 000 population<sup>2</sup></b>	2992	2712	2605	2369	2627	2586	2695	2626

<sup>1</sup>Total includes cases where sex is not reported<sup>2</sup>Denominator = Statistics New Zealand mid-year population estimates