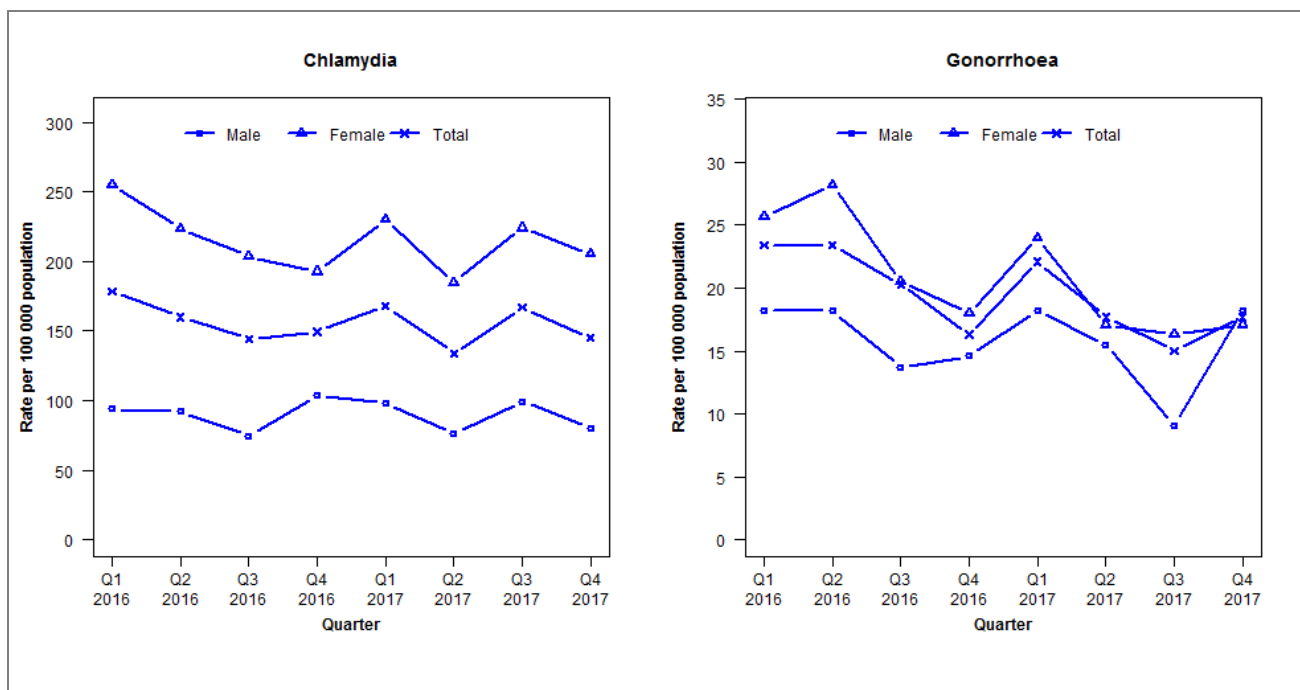


## Laboratory surveillance of chlamydia and gonorrhoea: October - December 2017

Quarterly chlamydia and gonorrhoea rates (male, female and total<sup>1</sup> population), January 2016 to December 2017



<sup>1</sup>Total includes cases where sex is not reported  
Denominator = Statistics New Zealand mid-year population estimates

Note: Data processing methods allow for exclusion of repeat tests.

### Number of lab confirmed chlamydia cases (male, female and total population) and number of tests per 100 000 population, January 2015 to December 2017

	Q1 2016	Q2 2016	Q3 2016	Q4 2016	Q1 2017	Q2 2017	Q3 2017	Q4 2017
<b>Number of lab-confirmed cases<sup>1</sup></b>	405	362	327	339	380	303	378	329
<i>Female</i>	298	261	238	225	269	216	262	240
<i>Male</i>	103	101	82	114	108	84	109	88
<b>Tests per 100 000 population<sup>2</sup></b>	2155	2110	2121	1966	2197	2033	2140	1927

<sup>1</sup>Total includes cases where sex is not reported

<sup>2</sup>Denominator = Statistics New Zealand mid-year population estimates

### Number of lab confirmed gonorrhoea cases (female, male and total population) and number of tests per 100 000 population, January 2015 to December 2017

	Q1 2016	Q2 2016	Q3 2016	Q4 2016	Q1 2017	Q2 2017	Q3 2017	Q4 2017
<b>Number of lab-confirmed cases<sup>1</sup></b>	53	53	46	37	50	40	34	40
<i>Female</i>	30	33	24	21	28	20	19	20
<i>Male</i>	20	20	15	16	20	17	10	20
<b>Tests per 100 000 population<sup>2</sup></b>	2157	2111	2121	1969	2199	2035	2143	1931

<sup>1</sup>Total includes cases where sex is not reported

<sup>2</sup>Denominator = Statistics New Zealand mid-year population estimates