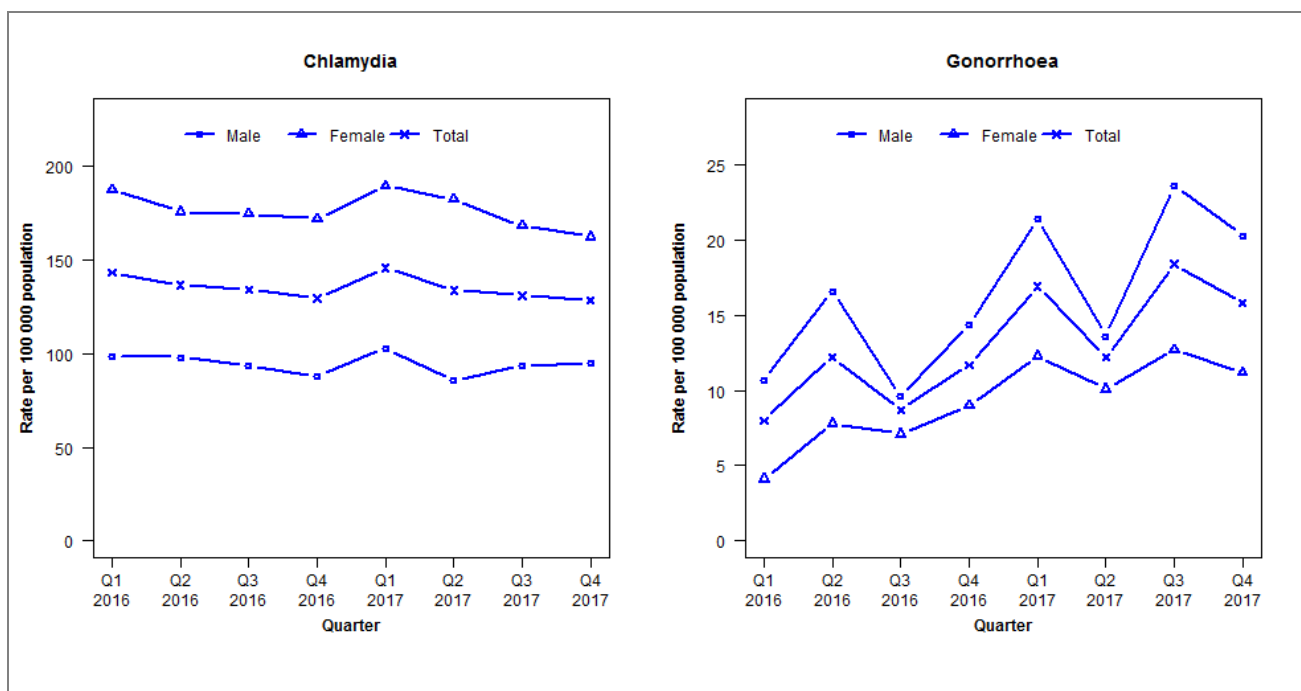


Laboratory surveillance of chlamydia and gonorrhoea: October - December 2017

Quarterly chlamydia and gonorrhoea rates (male, female and total¹ population), January 2016 to December 2017



¹Total includes cases where sex is not reported

Denominator = Statistics New Zealand mid-year population estimates

Note: Data processing methods allow for exclusion of repeat tests.

Number of lab confirmed chlamydia cases (male, female and total population) and number of tests per 100 000 population, January 2015 to December 2017

	Q1 2016	Q2 2016	Q3 2016	Q4 2016	Q1 2017	Q2 2017	Q3 2017	Q4 2017
Number of lab-confirmed cases¹	772	737	724	699	787	722	706	693
<i>Female</i>	503	471	468	461	508	489	451	435
<i>Male</i>	267	266	254	238	279	232	254	258
Tests per 100 000 population²	2334	2305	2298	2132	2441	2322	2317	2231

¹Total includes cases where sex is not reported

²Denominator = Statistics New Zealand mid-year population estimates

Number of lab confirmed gonorrhoea cases (female, male and total population) and number of tests per 100 000 population, January 2015 to December 2017

	Q1 2016	Q2 2016	Q3 2016	Q4 2016	Q1 2017	Q2 2017	Q3 2017	Q4 2017
Number of lab-confirmed cases¹	43	66	47	63	91	66	99	85
<i>Female</i>	11	21	19	24	33	27	34	30
<i>Male</i>	29	45	26	39	58	37	64	55
Tests per 100 000 population²	2958	2905	2907	2658	3023	2887	2902	2708

¹Total includes cases where sex is not reported

²Denominator = Statistics New Zealand mid-year population estimates