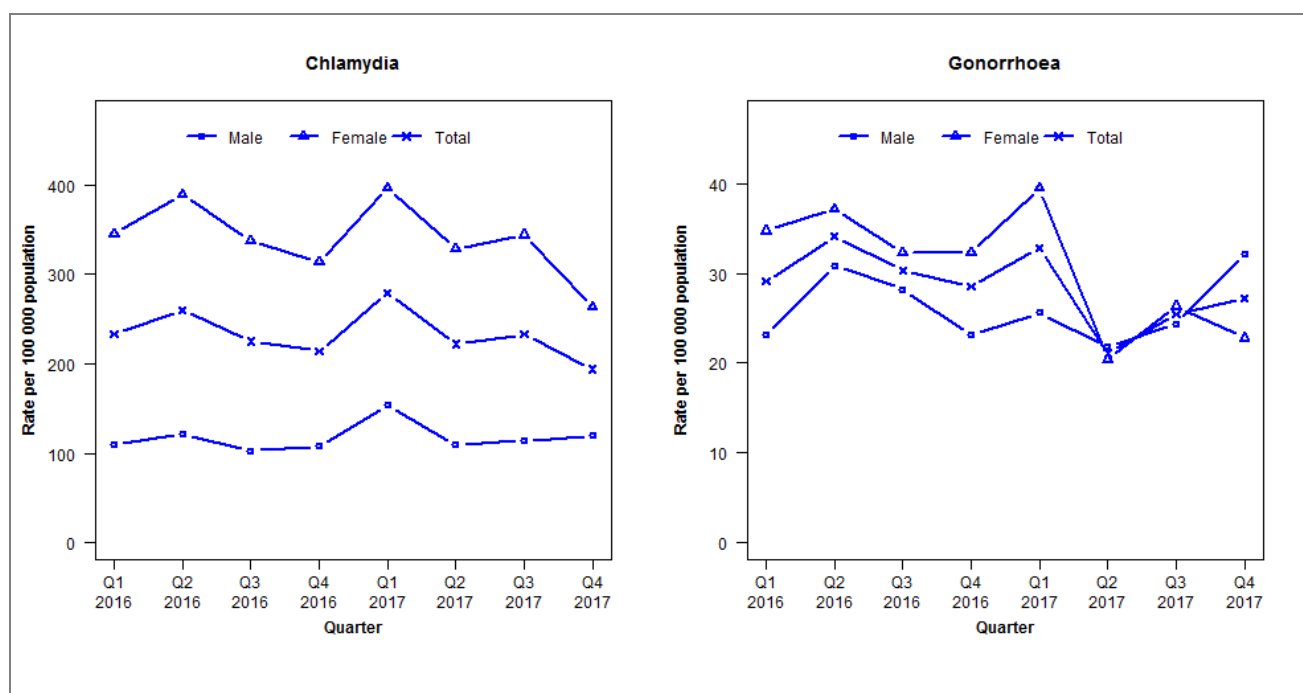


## Laboratory surveillance of chlamydia and gonorrhoea: October - December 2017

Quarterly chlamydia and gonorrhoea rates (male, female and total<sup>1</sup> population), January 2016 to December 2017



<sup>1</sup>Total includes cases where sex is not reported

Denominator = Statistics New Zealand mid-year population estimates

Note: Data processing methods allow for exclusion of repeat tests.

## Number of lab confirmed chlamydia cases (male, female and total population) and number of tests per 100 000 population, January 2015 to December 2017

|  | Q1 2016 | Q2 2016 | Q3 2016 | Q4 2016 | Q1 2017 | Q2 2017 | Q3 2017 | Q4 2017 |
|--|---------|---------|---------|---------|---------|---------|---------|---------|
| <b>Number of lab-confirmed cases<sup>1</sup></b> | 376     | 420     | 363     | 346     | 451     | 359     | 376     | 313     |
| <i>Female</i>                                    | 288     | 325     | 282     | 262     | 331     | 274     | 287     | 220     |
| <i>Male</i>                                      | 86      | 95      | 80      | 84      | 120     | 85      | 89      | 93      |
| <b>Tests per 100 000 population<sup>2</sup></b>  | 2081    | 2154    | 2009    | 1900    | 2132    | 2000    | 2106    | 1933    |

<sup>1</sup>Total includes cases where sex is not reported

<sup>2</sup>Denominator = Statistics New Zealand mid-year population estimates

## Number of lab confirmed gonorrhoea cases (female, male and total population) and number of tests per 100 000 population, January 2015 to December 2017

|  | Q1 2016 | Q2 2016 | Q3 2016 | Q4 2016 | Q1 2017 | Q2 2017 | Q3 2017 | Q4 2017 |
|--|---------|---------|---------|---------|---------|---------|---------|---------|
| <b>Number of lab-confirmed cases<sup>1</sup></b> | 47      | 55      | 49      | 46      | 53      | 34      | 41      | 44      |
| <i>Female</i>                                    | 29      | 31      | 27      | 27      | 33      | 17      | 22      | 19      |
| <i>Male</i>                                      | 18      | 24      | 22      | 18      | 20      | 17      | 19      | 25      |
| <b>Tests per 100 000 population<sup>2</sup></b>  | 2230    | 2291    | 2139    | 2021    | 2260    | 2125    | 2243    | 2062    |

<sup>1</sup>Total includes cases where sex is not reported

<sup>2</sup>Denominator = Statistics New Zealand mid-year population estimates