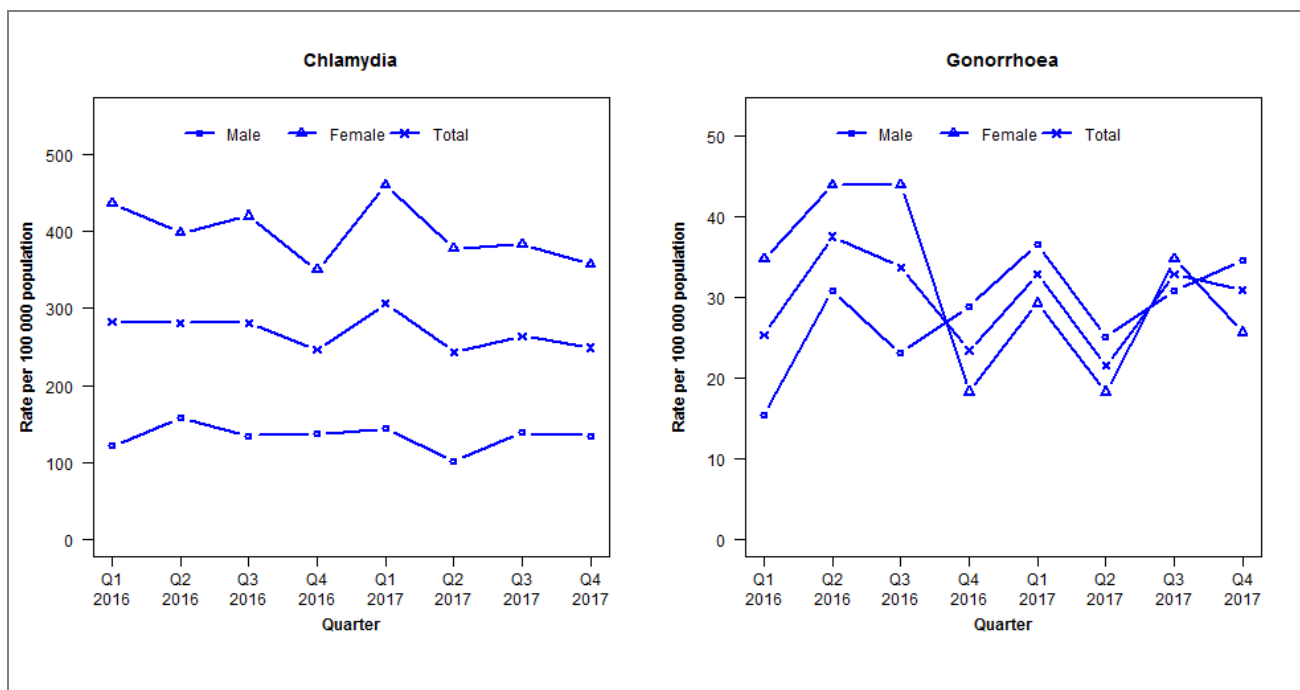


Laboratory surveillance of chlamydia and gonorrhoea: October - December 2017

Quarterly chlamydia and gonorrhoea rates (male, female and total¹ population), January 2016 to December 2017



¹Total includes cases where sex is not reported
Denominator = Statistics New Zealand mid-year population estimates

Note: Data processing methods allow for exclusion of repeat tests.

Number of lab confirmed chlamydia cases (male, female and total population) and number of tests per 100 000 population, January 2015 to December 2017

	Q1 2016	Q2 2016	Q3 2016	Q4 2016	Q1 2017	Q2 2017	Q3 2017	Q4 2017
Number of lab-confirmed cases¹	301	299	299	262	326	259	281	265
<i>Female</i>	238	217	229	191	251	206	209	195
<i>Male</i>	63	82	70	71	75	53	72	70
Tests per 100 000 population²	3030	2973	2851	2490	2830	2635	2646	2634

¹Total includes cases where sex is not reported

²Denominator = Statistics New Zealand mid-year population estimates

Number of lab confirmed gonorrhoea cases (female, male and total population) and number of tests per 100 000 population, January 2015 to December 2017

	Q1 2016	Q2 2016	Q3 2016	Q4 2016	Q1 2017	Q2 2017	Q3 2017	Q4 2017
Number of lab-confirmed cases¹	27	40	36	25	35	23	35	33
<i>Female</i>	19	24	24	10	16	10	19	14
<i>Male</i>	8	16	12	15	19	13	16	18
Tests per 100 000 population²	3036	2984	2858	2494	2836	2642	2648	2634

¹Total includes cases where sex is not reported

²Denominator = Statistics New Zealand mid-year population estimates