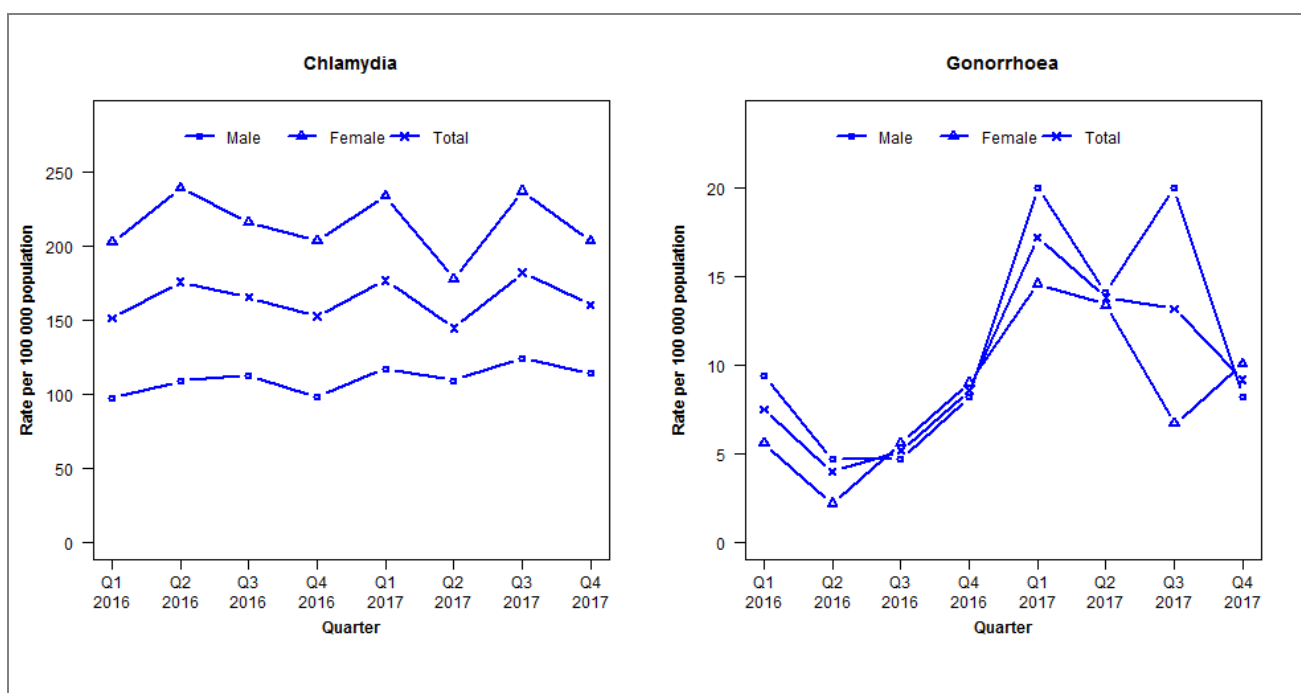


## Laboratory surveillance of chlamydia and gonorrhoea: October - December 2017

Quarterly chlamydia and gonorrhoea rates (male, female and total<sup>1</sup> population), January 2016 to December 2017



<sup>1</sup>Total includes cases where sex is not reported

Denominator = Statistics New Zealand mid-year population estimates

Note: Data processing procedures allow for exclusion of repeat tests. Gonorrhoea rates for males and females are based on less than five cases in some quarters.

## Number of lab confirmed chlamydia cases (male, female and total population) and number of tests per 100 000 population, January 2015 to December 2017

	Q1 2016	Q2 2016	Q3 2016	Q4 2016	Q1 2017	Q2 2017	Q3 2017	Q4 2017
<b>Number of lab-confirmed cases<sup>1</sup></b>	264	307	289	267	309	253	318	280
<i>Female</i>	181	214	193	182	209	159	212	182
<i>Male</i>	83	93	96	84	100	93	106	97
<b>Tests per 100 000 population<sup>2</sup></b>	1930	1878	1837	1841	2017	1927	1971	1878

<sup>1</sup>Total includes cases where sex is not reported

<sup>2</sup>Denominator = Statistics New Zealand mid-year population estimates

## Number of lab confirmed gonorrhoea cases (female, male and total population) and number of tests per 100 000 population, January 2015 to December 2017

	Q1 2016	Q2 2016	Q3 2016	Q4 2016	Q1 2017	Q2 2017	Q3 2017	Q4 2017
<b>Number of lab-confirmed cases<sup>1</sup></b>	13	7	9	15	30	24	23	16
<i>Female</i>	5	2	5	8	13	12	6	9
<i>Male</i>	8	4	4	7	17	12	17	7
<b>Tests per 100 000 population<sup>2</sup></b>	1999	1909	1865	1871	2047	1954	1997	1911

<sup>1</sup>Total includes cases where sex is not reported

<sup>2</sup>Denominator = Statistics New Zealand mid-year population estimates