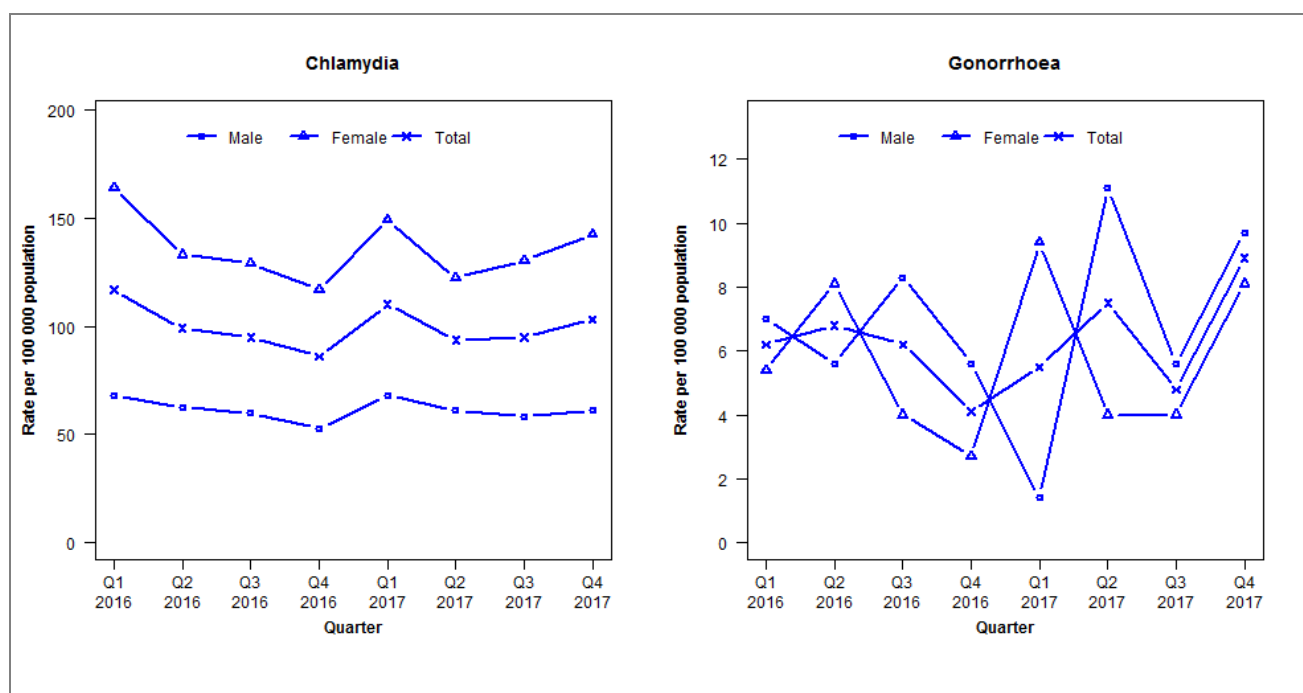


Laboratory surveillance of chlamydia and gonorrhoea: October - December 2017

Quarterly chlamydia and gonorrhoea rates (male, female and total¹ population), January 2016 to December 2017



¹Total includes cases where sex is not reported

Denominator = Statistics New Zealand mid-year population estimates

Note: Data processing procedures allow for exclusion of repeat tests. Gonorrhoea rates for males and females are based on less than five cases in some quarters.

Number of lab confirmed chlamydia cases (male, female and total population) and number of tests per 100 000 population, January 2015 to December 2017

	Q1 2016	Q2 2016	Q3 2016	Q4 2016	Q1 2017	Q2 2017	Q3 2017	Q4 2017
Number of lab-confirmed cases¹	171	145	139	126	161	137	139	151
<i>Female</i>	122	99	96	87	111	91	97	106
<i>Male</i>	49	45	43	38	49	44	42	44
Tests per 100 000 population²	1756	1555	1484	1432	1624	1530	1597	1564

¹Total includes cases where sex is not reported

²Denominator = Statistics New Zealand mid-year population estimates

Number of lab confirmed gonorrhoea cases (female, male and total population) and number of tests per 100 000 population, January 2015 to December 2017

	Q1 2016	Q2 2016	Q3 2016	Q4 2016	Q1 2017	Q2 2017	Q3 2017	Q4 2017
Number of lab-confirmed cases¹	9	10	9	6	8	11	7	13
<i>Female</i>	4	6	3	2	7	3	3	6
<i>Male</i>	5	4	6	4	1	8	4	7
Tests per 100 000 population²	1763	1558	1486	1437	1631	1532	1599	1569

¹Total includes cases where sex is not reported

²Denominator = Statistics New Zealand mid-year population estimates