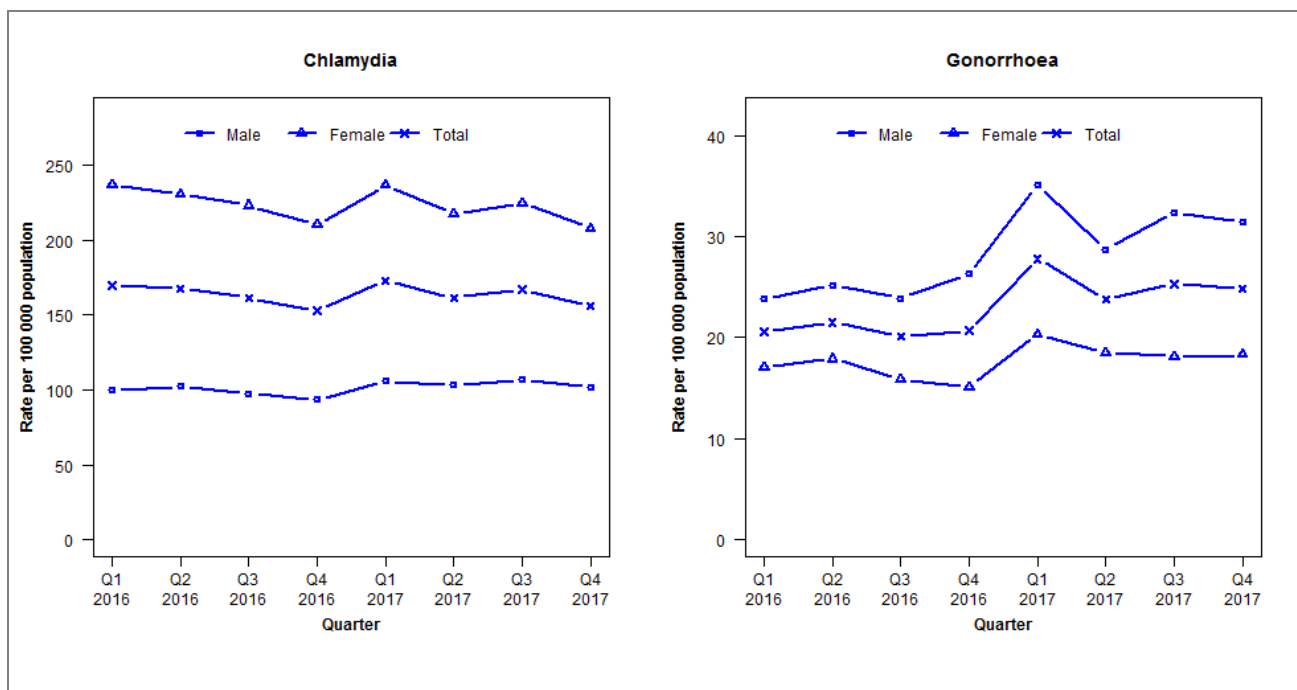


Laboratory surveillance of chlamydia and gonorrhoea: October - December 2017

Quarterly chlamydia and gonorrhoea rates (male, female and total¹ population), January 2016 to December 2017



¹Total includes cases where sex is not reported
Denominator = Statistics New Zealand mid-year population estimates

Note: Data processing methods allow for exclusion of repeat tests. NAAT (nucleic acid amplification testing) for gonorrhoea has been introduced in the majority of laboratories since 2012. Refer to DHB level reports for further details. Waikato Hospital data missing in previous 2017 quarterly reports (Q1–Q3) have now been included for all quarters in 2017 in this report.

Number of lab confirmed chlamydia cases (male, female and total population) and number of tests per 100 000 population, January 2015 to December 2017

| | Q1 2016 | Q2 2016 | Q3 2016 | Q4 2016 | Q1 2017 | Q2 2017 | Q3 2017 | Q4 2017 |
|--|---------|---------|---------|---------|---------|---------|---------|---------|
| Number of lab-confirmed cases¹ | 7962 | 7872 | 7580 | 7175 | 8112 | 7581 | 7838 | 7322 |
| <i>Female</i> | 5641 | 5503 | 5316 | 5008 | 5646 | 5186 | 5352 | 4957 |
| <i>Male</i> | 2305 | 2362 | 2249 | 2154 | 2447 | 2379 | 2464 | 2356 |
| Tests per 100 000 population² | 2416 | 2360 | 2275 | 2103 | 2309 | 2259 | 2357 | 2219 |

¹Total includes cases where sex is not reported

²Denominator = Statistics New Zealand mid-year population estimates

Number of lab confirmed gonorrhoea cases (female, male and total population) and number of tests per 100 000 population, January 2015 to December 2017

| | Q1 2016 | Q2 2016 | Q3 2016 | Q4 2016 | Q1 2017 | Q2 2017 | Q3 2017 | Q4 2017 |
|--|---------|---------|---------|---------|---------|---------|---------|---------|
| Number of lab-confirmed cases¹ | 968 | 1009 | 942 | 969 | 1304 | 1115 | 1186 | 1165 |
| <i>Female</i> | 405 | 426 | 379 | 359 | 483 | 441 | 432 | 435 |
| <i>Male</i> | 550 | 581 | 552 | 606 | 810 | 663 | 747 | 728 |
| Tests per 100 000 population² | 2678 | 2556 | 2455 | 2257 | 2511 | 2431 | 2542 | 2342 |

¹Total includes cases where sex is not reported

²Denominator = Statistics New Zealand mid-year population estimates