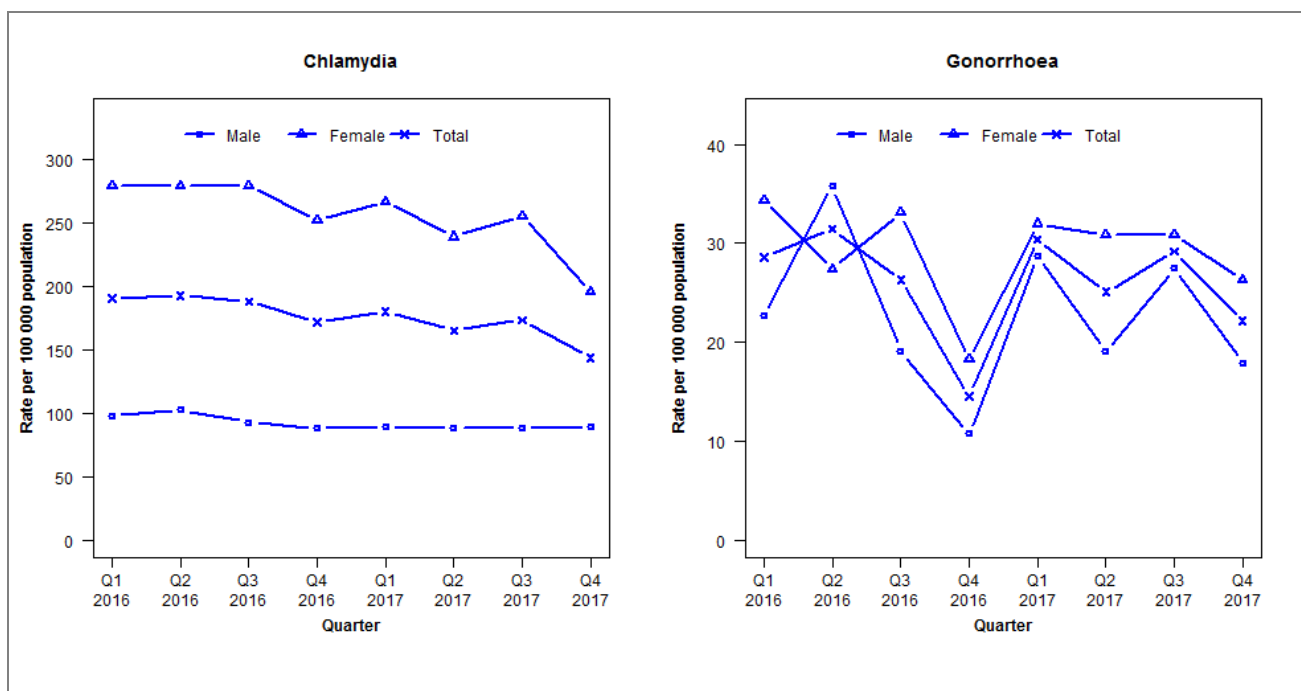


Laboratory surveillance of chlamydia and gonorrhoea: October - December 2017

Quarterly chlamydia and gonorrhoea rates (male, female and total¹ population), January 2016 to December 2017



¹Total includes cases where sex is not reported

Denominator = Statistics New Zealand mid-year population estimates

Note: Data processing methods allow for exclusion of repeat tests.

Number of lab confirmed chlamydia cases (male, female and total population) and number of tests per 100 000 population, January 2015 to December 2017

	Q1 2016	Q2 2016	Q3 2016	Q4 2016	Q1 2017	Q2 2017	Q3 2017	Q4 2017
Number of lab-confirmed cases¹	326	330	322	294	308	283	297	246
<i>Female</i>	244	244	244	220	233	209	223	171
<i>Male</i>	82	86	78	74	75	74	74	75
Tests per 100 000 population²	1875	1866	1780	1686	1840	1861	1854	1755

¹Total includes cases where sex is not reported

²Denominator = Statistics New Zealand mid-year population estimates

Number of lab confirmed gonorrhoea cases (female, male and total population) and number of tests per 100 000 population, January 2015 to December 2017

	Q1 2016	Q2 2016	Q3 2016	Q4 2016	Q1 2017	Q2 2017	Q3 2017	Q4 2017
Number of lab-confirmed cases¹	49	54	45	25	52	43	50	38
<i>Female</i>	30	24	29	16	28	27	27	23
<i>Male</i>	19	30	16	9	24	16	23	15
Tests per 100 000 population²	2634	2553	2313	2176	2322	2306	2277	2173

¹Total includes cases where sex is not reported

²Denominator = Statistics New Zealand mid-year population estimates