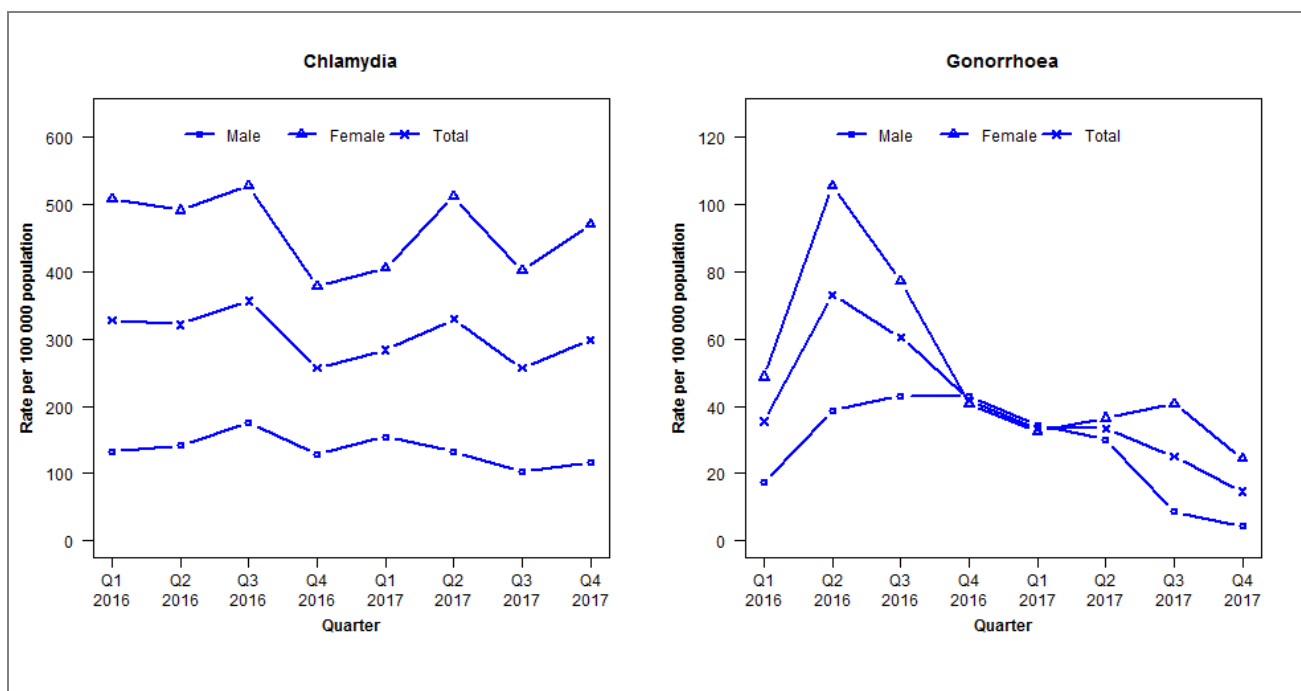


Laboratory surveillance of chlamydia and gonorrhoea: October - December 2017

Quarterly chlamydia and gonorrhoea rates (male, female and total¹ population), January 2016 to December 2017



¹Total includes cases where sex is not reported

Denominator = Statistics New Zealand mid-year population estimates

Note: Data processing methods allow for exclusion of repeat tests. Gonorrhoea rates for males are based on less than five cases in some quarters.

Number of lab confirmed chlamydia cases (male, female and total population) and number of tests per 100 000 population, January 2015 to December 2017

	Q1 2016	Q2 2016	Q3 2016	Q4 2016	Q1 2017	Q2 2017	Q3 2017	Q4 2017
Number of lab-confirmed cases¹	157	154	171	123	136	158	123	143
<i>Female</i>	125	121	130	93	100	126	99	116
<i>Male</i>	31	33	41	30	36	31	24	27
Tests per 100 000 population²	2346	2340	2352	2254	2440	2523	2402	2348

¹Total includes cases where sex is not reported

²Denominator = Statistics New Zealand mid-year population estimates

Number of lab confirmed gonorrhoea cases (female, male and total population) and number of tests per 100 000 population, January 2015 to December 2017

	Q1 2016	Q2 2016	Q3 2016	Q4 2016	Q1 2017	Q2 2017	Q3 2017	Q4 2017
Number of lab-confirmed cases¹	17	35	29	20	16	16	12	7
<i>Female</i>	12	26	19	10	8	9	10	6
<i>Male</i>	4	9	10	10	8	7	2	1
Tests per 100 000 population²	2388	2373	2365	2294	2473	2542	2427	2388

¹Total includes cases where sex is not reported

²Denominator = Statistics New Zealand mid-year population estimates