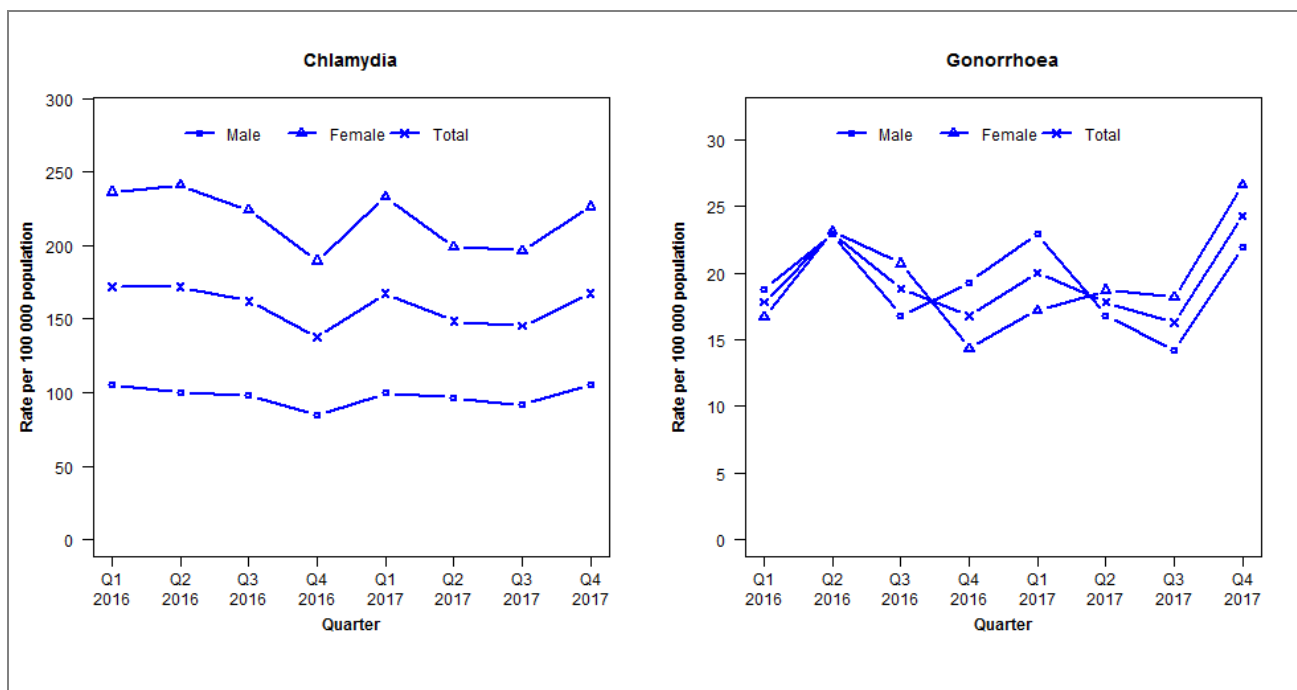


Laboratory surveillance of chlamydia and gonorrhoea: October - December 2017

Quarterly chlamydia and gonorrhoea rates (male, female and total¹ population), January 2016 to December 2017



¹Total includes cases where sex is not reported
Denominator = Statistics New Zealand mid-year population estimates

Note: Data processing methods allow for exclusion of repeat tests. Waikato Hospital data missing in previous 2017 quarterly reports (Q1–Q3) have now been included for all quarters in 2017 in this report.

Number of lab confirmed chlamydia cases (male, female and total population) and number of tests per 100 000 population, January 2015 to December 2017

	Q1 2016	Q2 2016	Q3 2016	Q4 2016	Q1 2017	Q2 2017	Q3 2017	Q4 2017
Number of lab-confirmed cases¹	687	687	648	551	669	594	581	669
<i>Female</i>	480	490	455	385	473	404	399	460
<i>Male</i>	207	197	193	166	196	190	180	208
Tests per 100 000 population²	2244	2262	2181	1993	2160	2071	2155	2007

¹Total includes cases where sex is not reported

²Denominator = Statistics New Zealand mid-year population estimates

Number of lab confirmed gonorrhoea cases (female, male and total population) and number of tests per 100 000 population, January 2015 to December 2017

	Q1 2016	Q2 2016	Q3 2016	Q4 2016	Q1 2017	Q2 2017	Q3 2017	Q4 2017
Number of lab-confirmed cases¹	71	92	75	67	80	71	65	97
<i>Female</i>	34	47	42	29	35	38	37	54
<i>Male</i>	37	45	33	38	45	33	28	43
Tests per 100 000 population²	2589	2393	2207	2024	2186	2095	2177	2029

¹Total includes cases where sex is not reported

²Denominator = Statistics New Zealand mid-year population estimates