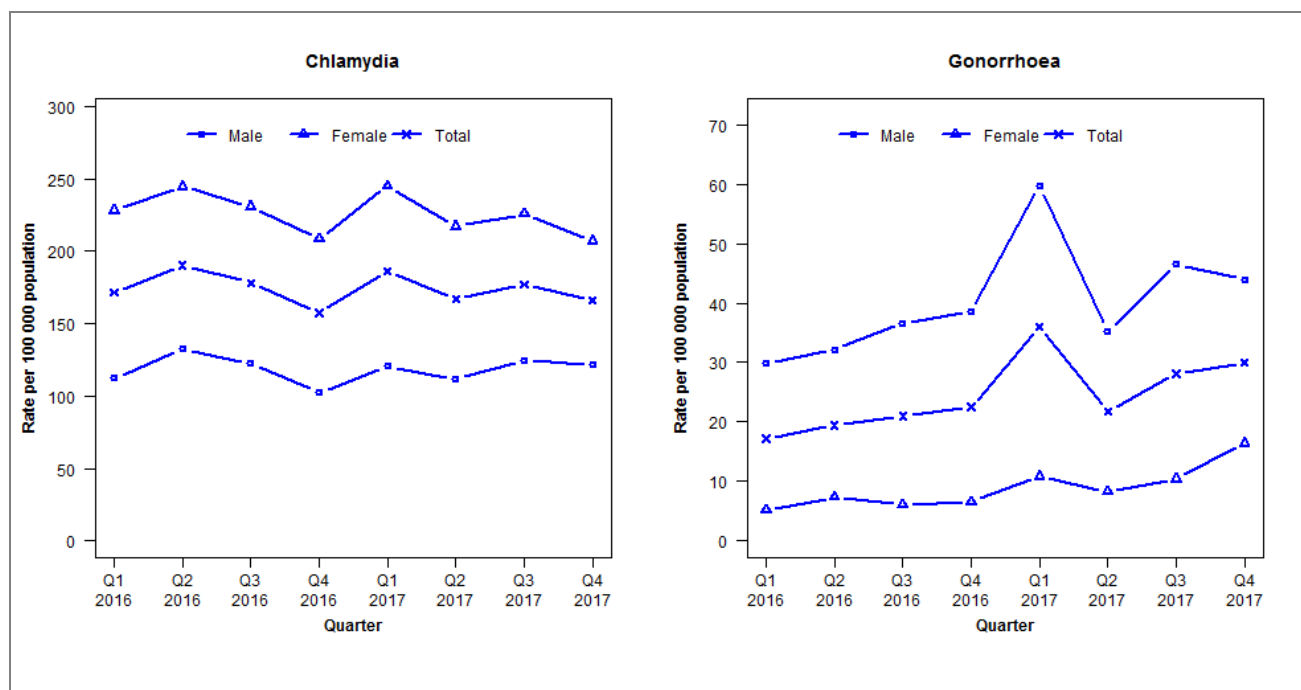


Laboratory surveillance of chlamydia and gonorrhoea: October - December 2017

Quarterly chlamydia and gonorrhoea rates (male, female and total¹ population), January 2016 to December 2017¹Total includes cases where sex is not reported

Denominator = Statistics New Zealand mid-year population estimates

Note: Data processing methods allow for exclusion of repeat tests. From Q1 2016 all data for the Wellington region is now being received (previously excluded a small Wellington Hospital laboratory).

Number of lab confirmed chlamydia cases (male, female and total population) and number of tests per 100 000 population, January 2015 to December 2017

	Q1 2016	Q2 2016	Q3 2016	Q4 2016	Q1 2017	Q2 2017	Q3 2017	Q4 2017
Number of lab-confirmed cases¹	777	862	807	713	843	755	802	752
Female	529	567	535	483	568	503	523	480
Male	248	293	271	226	267	246	276	269
Tests per 100 000 population²	2796	2822	2626	2413	2807	2656	2850	2699

¹Total includes cases where sex is not reported²Denominator = Statistics New Zealand mid-year population estimates

Number of lab confirmed gonorrhoea cases (female, male and total population) and number of tests per 100 000 population, January 2015 to December 2017

	Q1 2016	Q2 2016	Q3 2016	Q4 2016	Q1 2017	Q2 2017	Q3 2017	Q4 2017
Number of lab-confirmed cases¹	78	88	95	102	163	98	127	136
Female	12	17	14	15	25	19	24	38
Male	66	71	81	85	132	78	103	97
Tests per 100 000 population²	2834	2839	2627	2417	2828	2672	2872	2718

¹Total includes cases where sex is not reported²Denominator = Statistics New Zealand mid-year population estimates