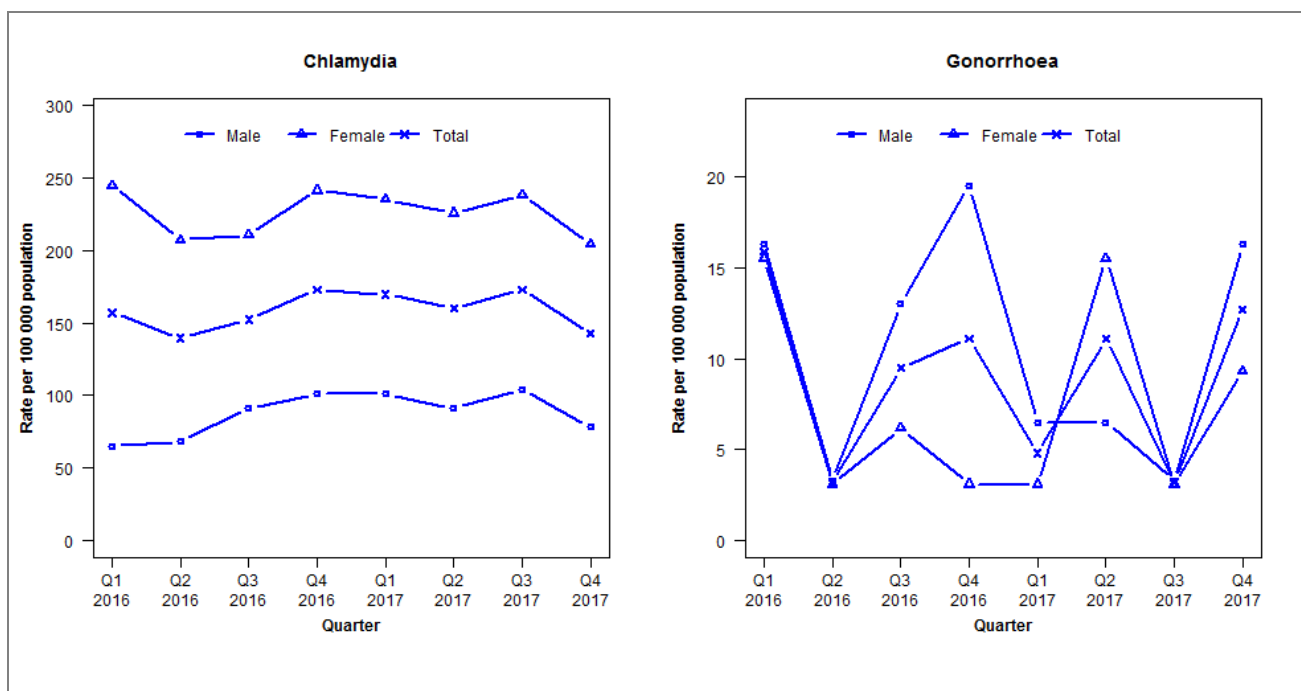


Laboratory surveillance of chlamydia and gonorrhoea: October - December 2017

Quarterly chlamydia and gonorrhoea rates (male, female and total¹ population), January 2016 to December 2017



¹Total includes cases where sex is not reported

Denominator = Statistics New Zealand mid-year population estimates

Note: Data processing methods allow for exclusion of repeat tests. Gonorrhoea rates for males and females are based on less than five cases in many quarters.

Number of lab confirmed chlamydia cases (male, female and total population) and number of tests per 100 000 population, January 2015 to December 2017

	Q1 2016	Q2 2016	Q3 2016	Q4 2016	Q1 2017	Q2 2017	Q3 2017	Q4 2017
Number of lab-confirmed cases¹	99	88	96	109	107	101	109	90
<i>Female</i>	79	67	68	78	76	73	77	66
<i>Male</i>	20	21	28	31	31	28	32	24
Tests per 100 000 population²	1902	1808	1853	1748	1834	1743	1848	1711

¹Total includes cases where sex is not reported

²Denominator = Statistics New Zealand mid-year population estimates

Number of lab confirmed gonorrhoea cases (female, male and total population) and number of tests per 100 000 population, January 2015 to December 2017

	Q1 2016	Q2 2016	Q3 2016	Q4 2016	Q1 2017	Q2 2017	Q3 2017	Q4 2017
Number of lab-confirmed cases¹	10	2	6	7	3	7	2	8
<i>Female</i>	5	1	2	1	1	5	1	3
<i>Male</i>	5	1	4	6	2	2	1	5
Tests per 100 000 population²	1940	1834	2303	2156	2243	2217	2306	2106

¹Total includes cases where sex is not reported

²Denominator = Statistics New Zealand mid-year population estimates