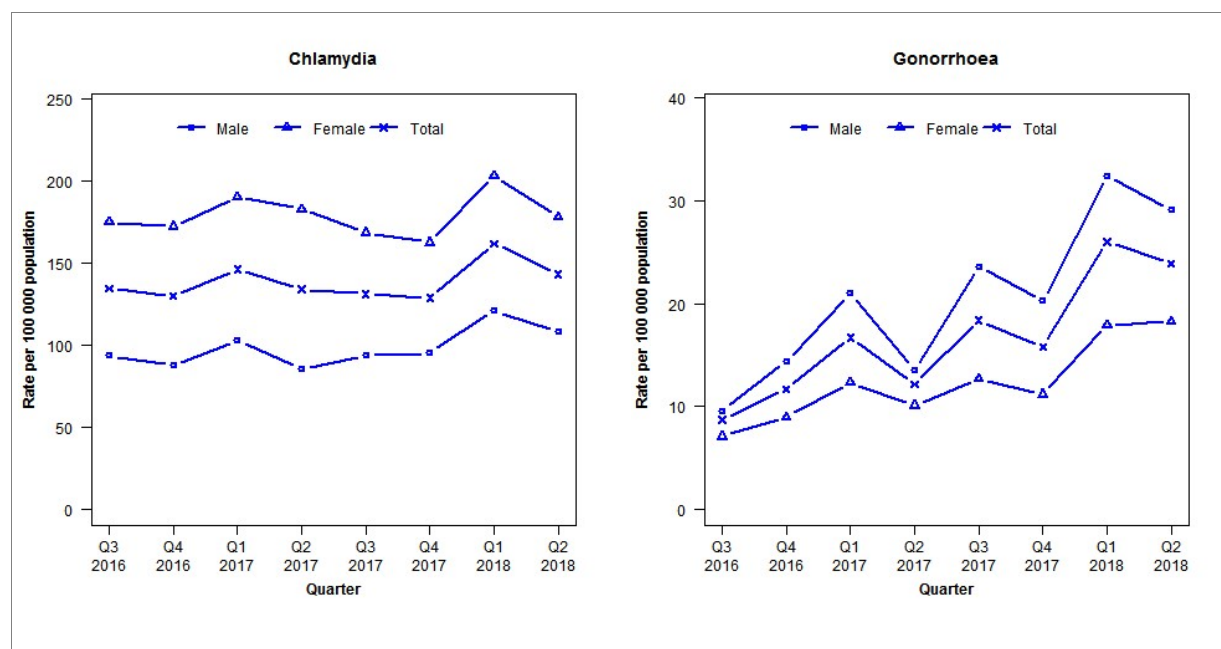


Laboratory surveillance of chlamydia and gonorrhoea: April - June 2018

Quarterly chlamydia and gonorrhoea rates (male, female and total¹ population), July 2016 to June 2018



¹Total includes cases where sex is not reported

Denominator = Statistics New Zealand mid-year population estimates

Note: Data processing methods allow for exclusion of repeat tests.

Number of lab confirmed chlamydia cases (male, female and total population) and number of tests per 100 000 population, July 2016 to June 2018

	Q3 2016	Q4 2016	Q1 2017	Q2 2017	Q3 2017	Q4 2017	Q1 2018	Q2 2018
Number of lab-confirmed cases¹	724	699	788	722	706	693	872	772
<i>Female</i>	468	461	509	489	451	435	543	476
<i>Male</i>	254	238	279	232	254	258	328	294
Tests per 100 000 population²	2298	2132	2441	2322	2317	2231	2645	2562

¹Total includes cases where sex is not reported

²Denominator = Statistics New Zealand mid-year population estimates

Number of lab confirmed gonorrhoea cases (female, male and total population) and number of tests per 100 000 population, July 2016 to June 2018

	Q3 2016	Q4 2016	Q1 2017	Q2 2017	Q3 2017	Q4 2017	Q1 2018	Q2 2018
Number of lab-confirmed cases¹	47	63	90	66	99	85	140	129
<i>Female</i>	19	24	33	27	34	30	48	49
<i>Male</i>	26	39	57	37	64	55	88	79
Tests per 100 000 population²	2907	2658	3023	2887	2902	2708	3192	3105

¹Total includes cases where sex is not reported

²Denominator = Statistics New Zealand mid-year population estimates