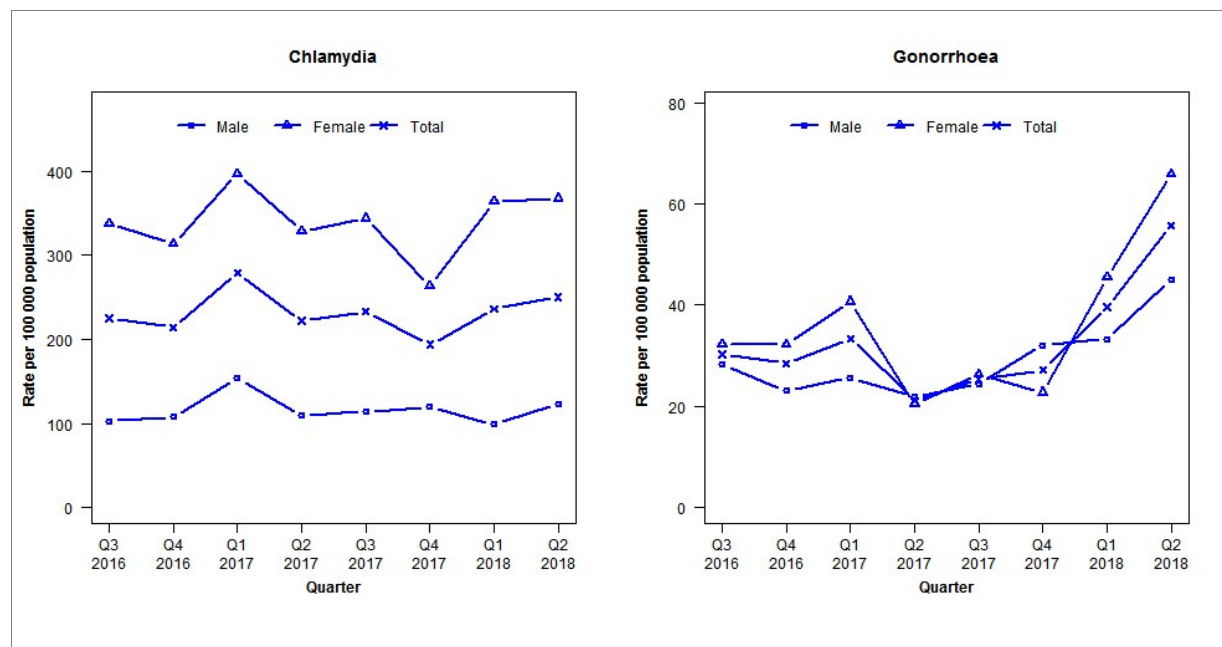


## Laboratory surveillance of chlamydia and gonorrhoea: April - June 2018

Quarterly chlamydia and gonorrhoea rates (male, female and total<sup>1</sup> population), July 2016 to June 2018



<sup>1</sup>Total includes cases where sex is not reported

Denominator = Statistics New Zealand mid-year population estimates

Note: Data processing methods allow for exclusion of repeat tests.

### Number of lab confirmed chlamydia cases (male, female and total population) and number of tests per 100 000 population, July 2016 to June 2018

	Q3 2016	Q4 2016	Q1 2017	Q2 2017	Q3 2017	Q4 2017	Q1 2018	Q2 2018
<b>Number of lab-confirmed cases<sup>1</sup></b>	363	346	451	359	376	313	381	404
<i>Female</i>	282	262	331	274	287	220	304	307
<i>Male</i>	80	84	120	85	89	93	77	96
<b>Tests per 100 000 population<sup>2</sup></b>	2009	1900	2132	2000	2106	1933	2261	2217

<sup>1</sup>Total includes cases where sex is not reported

<sup>2</sup>Denominator = Statistics New Zealand mid-year population estimates

### Number of lab confirmed gonorrhoea cases (female, male and total population) and number of tests per 100 000 population, July 2016 to June 2018

	Q3 2016	Q4 2016	Q1 2017	Q2 2017	Q3 2017	Q4 2017	Q1 2018	Q2 2018
<b>Number of lab-confirmed cases<sup>1</sup></b>	49	46	54	34	41	44	64	90
<i>Female</i>	27	27	34	17	22	19	38	55
<i>Male</i>	22	18	20	17	19	25	26	35
<b>Tests per 100 000 population<sup>2</sup></b>	2139	2021	2261	2125	2243	2062	2411	2327

<sup>1</sup>Total includes cases where sex is not reported

<sup>2</sup>Denominator = Statistics New Zealand mid-year population estimates