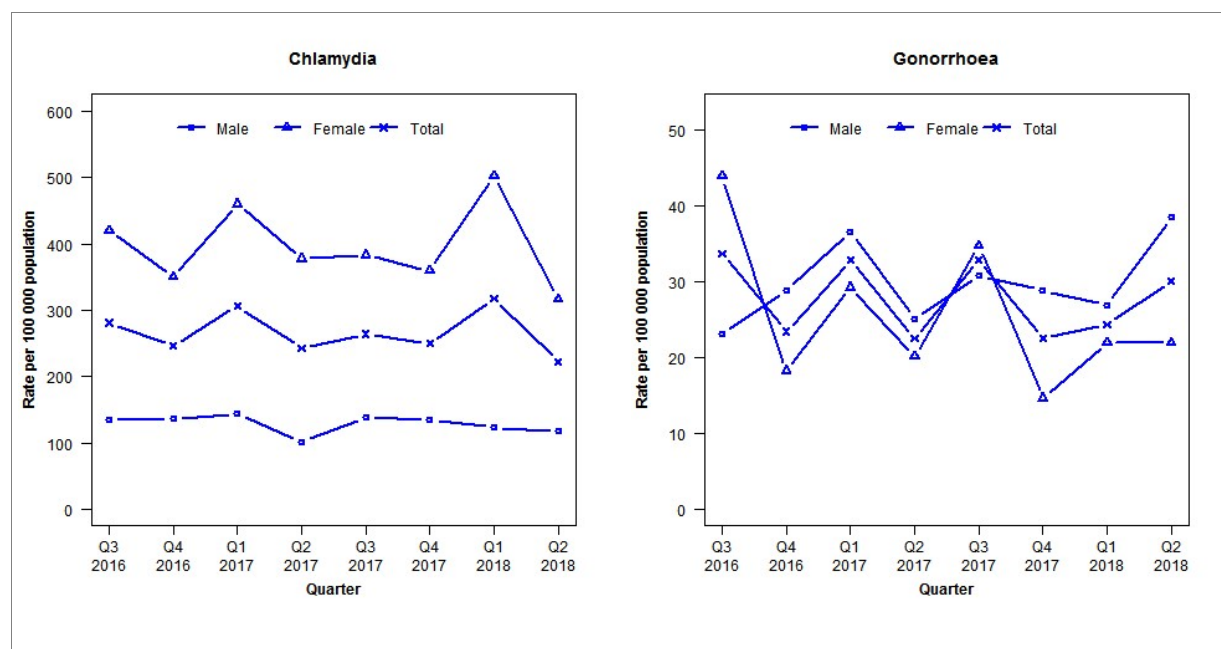


## Laboratory surveillance of chlamydia and gonorrhoea: April - June 2018

Quarterly chlamydia and gonorrhoea rates (male, female and total<sup>1</sup> population), July 2016 to June 2018



<sup>1</sup>Total includes cases where sex is not reported

Denominator = Statistics New Zealand mid-year population estimates

Note: Data processing methods allow for exclusion of repeat tests.

### Number of lab confirmed chlamydia cases (male, female and total population) and number of tests per 100 000 population, July 2016 to June 2018

	Q3 2016	Q4 2016	Q1 2017	Q2 2017	Q3 2017	Q4 2017	Q1 2018	Q2 2018
<b>Number of lab-confirmed cases<sup>1</sup></b>	299	262	326	259	281	266	338	237
<i>Female</i>	229	191	251	206	209	196	274	173
<i>Male</i>	70	71	75	53	72	70	64	61
<b>Tests per 100 000 population<sup>2</sup></b>	2834	2490	2830	2634	2646	2634	2880	2806

<sup>1</sup>Total includes cases where sex is not reported

<sup>2</sup>Denominator = Statistics New Zealand mid-year population estimates

### Number of lab confirmed gonorrhoea cases (female, male and total population) and number of tests per 100 000 population, July 2016 to June 2018

	Q3 2016	Q4 2016	Q1 2017	Q2 2017	Q3 2017	Q4 2017	Q1 2018	Q2 2018
<b>Number of lab-confirmed cases<sup>1</sup></b>	36	25	35	24	35	24	26	32
<i>Female</i>	24	10	16	11	19	8	12	12
<i>Male</i>	12	15	19	13	16	15	14	20
<b>Tests per 100 000 population<sup>2</sup></b>	2841	2494	2836	2642	2648	2634	2881	2807

<sup>1</sup>Total includes cases where sex is not reported

<sup>2</sup>Denominator = Statistics New Zealand mid-year population estimates