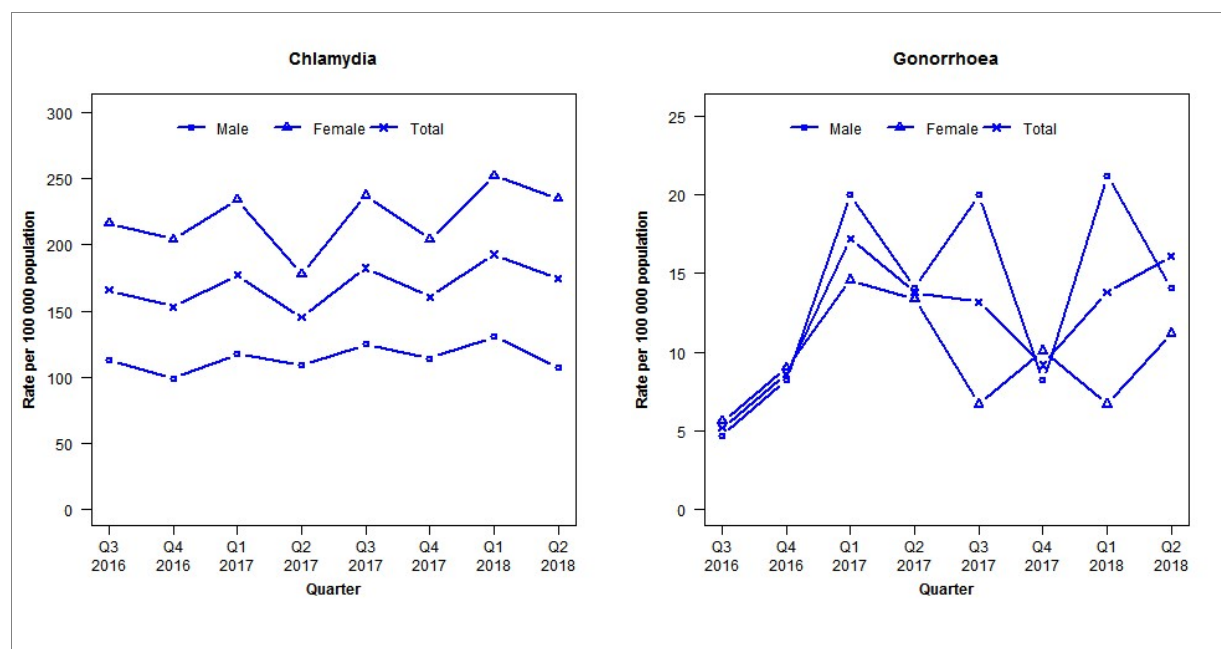


Laboratory surveillance of chlamydia and gonorrhoea: April - June 2018

Quarterly chlamydia and gonorrhoea rates (male, female and total¹ population), July 2016 to June 2018



¹Total includes cases where sex is not reported

Denominator = Statistics New Zealand mid-year population estimates

Note: Data processing procedures allow for exclusion of repeat tests. Gonorrhoea rates for males are based on less than five cases in one quarter.

Number of lab confirmed chlamydia cases (male, female and total population) and number of tests per 100 000 population, July 2016 to June 2018

	Q3 2016	Q4 2016	Q1 2017	Q2 2017	Q3 2017	Q4 2017	Q1 2018	Q2 2018
Number of lab-confirmed cases¹	289	267	309	253	318	280	336	304
<i>Female</i>	193	182	209	159	212	182	225	210
<i>Male</i>	96	84	100	93	106	97	111	91
Tests per 100 000 population²	1837	1841	2017	1927	1971	1878	1979	1968

¹Total includes cases where sex is not reported

²Denominator = Statistics New Zealand mid-year population estimates

Number of lab confirmed gonorrhoea cases (female, male and total population) and number of tests per 100 000 population, July 2016 to June 2018

	Q3 2016	Q4 2016	Q1 2017	Q2 2017	Q3 2017	Q4 2017	Q1 2018	Q2 2018
Number of lab-confirmed cases¹	9	15	30	24	23	16	24	28
<i>Female</i>	5	8	13	12	6	9	6	10
<i>Male</i>	4	7	17	12	17	7	18	12
Tests per 100 000 population²	1865	1871	2047	1954	1997	1911	1995	2103

¹Total includes cases where sex is not reported

²Denominator = Statistics New Zealand mid-year population estimates