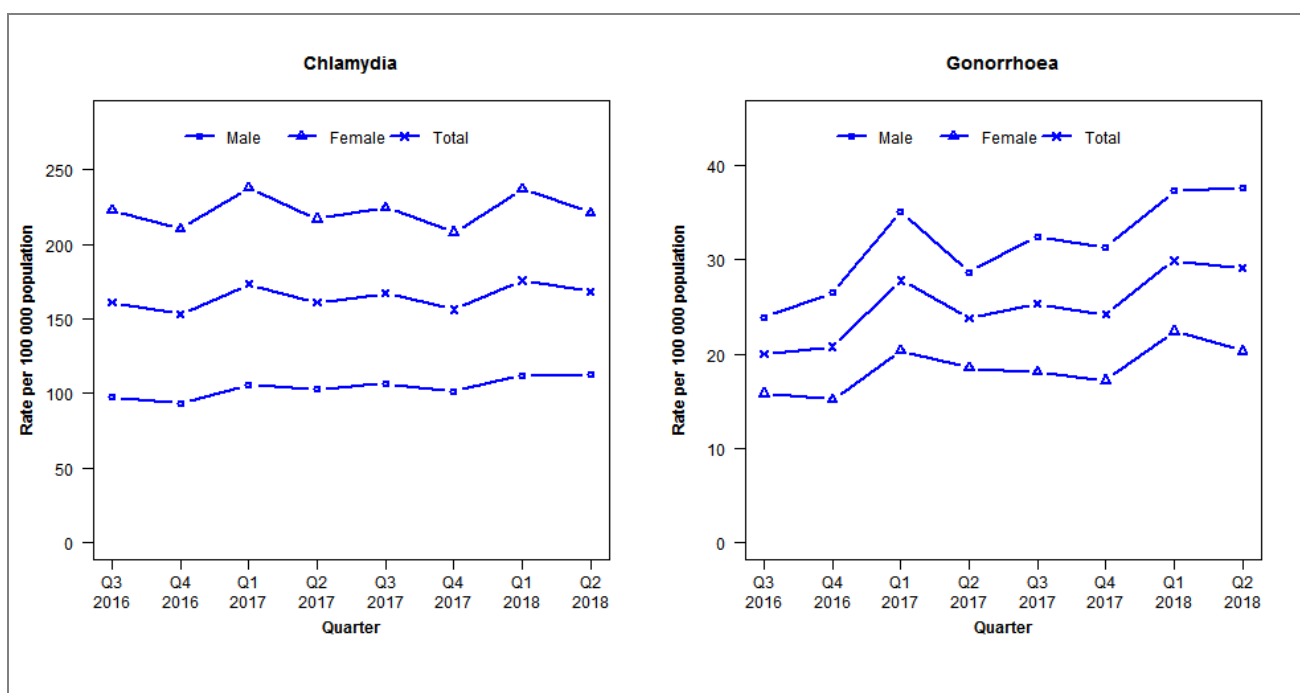


## Laboratory surveillance of chlamydia and gonorrhoea: April - June 2018

Quarterly chlamydia and gonorrhoea rates (male, female and total<sup>1</sup> population), July 2016 to June 2018



<sup>1</sup>Total includes cases where sex is not reported

Denominator = Statistics New Zealand mid-year population estimates

Note: Data processing methods allow for exclusion of repeat tests. NAAT (nucleic acid amplification testing) for gonorrhoea has been introduced in the majority of laboratories since 2012. Refer to DHB level reports for further details. Waikato Hospital data missing in previous 2017 quarterly reports (Q1–Q3) have been included for all quarters in 2017 in this report.

### Number of lab confirmed chlamydia cases (male, female and total population) and number of tests per 100 000 population, July 2016 to June 2018

	Q3 2016	Q4 2016	Q1 2017	Q2 2017	Q3 2017	Q4 2017	Q1 2018	Q2 2018
<b>Number of lab-confirmed cases<sup>1</sup></b>	7567	7175	8129	7555	7838	7324	8246	7894
<i>Female</i>	5305	5008	5665	5167	5352	4958	5650	5268
<i>Male</i>	2247	2154	2447	2372	2464	2345	2588	2606
<b>Tests per 100 000 population<sup>2</sup></b>	2272	2103	2333	2259	2342	2220	2470	2439

<sup>1</sup>Total includes cases where sex is not reported

<sup>2</sup>Denominator = Statistics New Zealand mid-year population estimates

### Number of lab confirmed gonorrhoea cases (female, male and total population) and number of tests per 100 000 population, July 2016 to June 2018

	Q3 2016	Q4 2016	Q1 2017	Q2 2017	Q3 2017	Q4 2017	Q1 2018	Q2 2018
<b>Number of lab-confirmed cases<sup>1</sup></b>	940	976	1305	1115	1187	1134	1403	1363
<i>Female</i>	377	361	485	441	432	409	533	483
<i>Male</i>	552	611	811	662	748	723	860	868
<b>Tests per 100 000 population<sup>2</sup></b>	2452	2257	2511	2433	2527	2391	2623	2616

<sup>1</sup>Total includes cases where sex is not reported

<sup>2</sup>Denominator = Statistics New Zealand mid-year population estimates