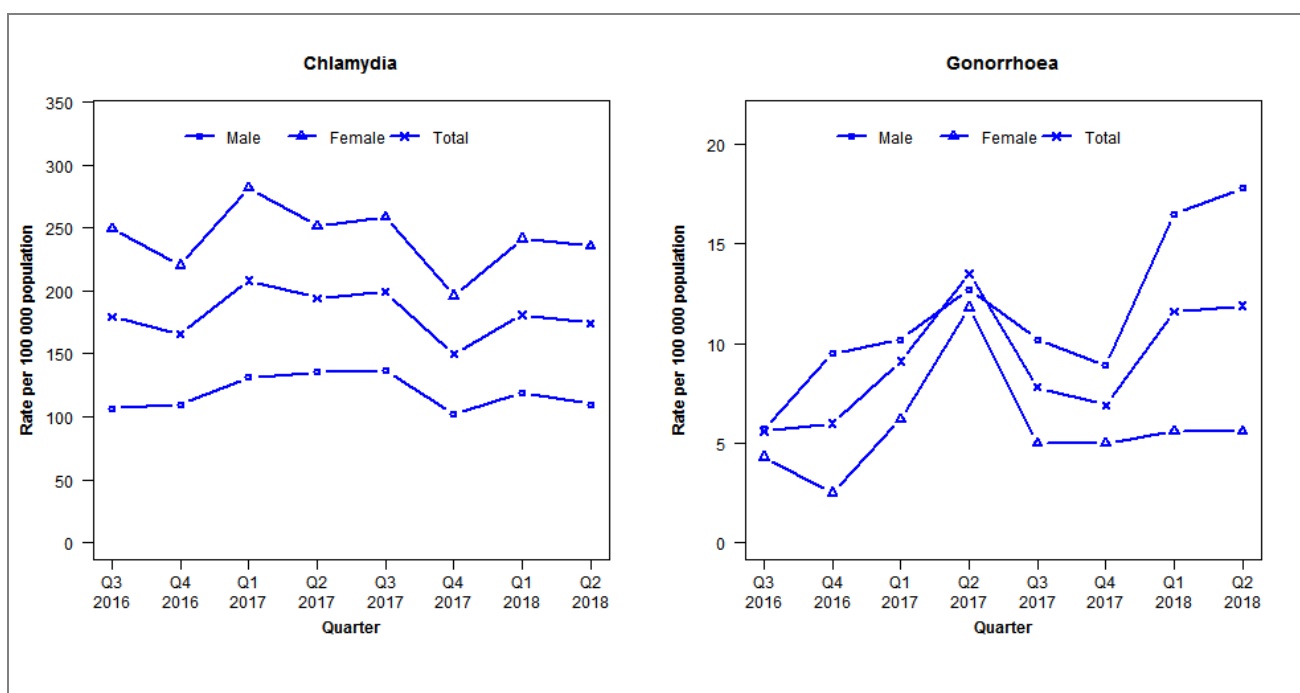


## Laboratory surveillance of chlamydia and gonorrhoea: April - June 2018

Quarterly chlamydia and gonorrhoea rates (male, female and total<sup>1</sup> population), July 2016 to June 2018



<sup>1</sup>Total includes cases where sex is not reported

Denominator = Statistics New Zealand mid-year population estimates

Note: Data processing methods allow for exclusion of repeat tests. Gonorrhoea rates for females are based on less than five cases in one quarter.

### Number of lab confirmed chlamydia cases (male, female and total population) and number of tests per 100 000 population, July 2016 to June 2018

	Q3 2016	Q4 2016	Q1 2017	Q2 2017	Q3 2017	Q4 2017	Q1 2018	Q2 2018
<b>Number of lab-confirmed cases<sup>1</sup></b>	571	528	664	619	634	477	577	555
<i>Female</i>	402	355	454	405	417	316	389	380
<i>Male</i>	168	173	207	213	215	161	187	173
<b>Tests per 100 000 population<sup>2</sup></b>	2487	2197	2429	2472	2560	2234	2593	2661

<sup>1</sup>Total includes cases where sex is not reported

<sup>2</sup>Denominator = Statistics New Zealand mid-year population estimates

### Number of lab confirmed gonorrhoea cases (female, male and total population) and number of tests per 100 000 population, July 2016 to June 2018

	Q3 2016	Q4 2016	Q1 2017	Q2 2017	Q3 2017	Q4 2017	Q1 2018	Q2 2018
<b>Number of lab-confirmed cases<sup>1</sup></b>	18	19	29	43	25	22	37	38
<i>Female</i>	7	4	10	19	8	8	9	9
<i>Male</i>	9	15	16	20	16	14	26	28
<b>Tests per 100 000 population<sup>2</sup></b>	2504	2213	2446	2486	2574	2247	2612	2677

<sup>1</sup>Total includes cases where sex is not reported

<sup>2</sup>Denominator = Statistics New Zealand mid-year population estimates