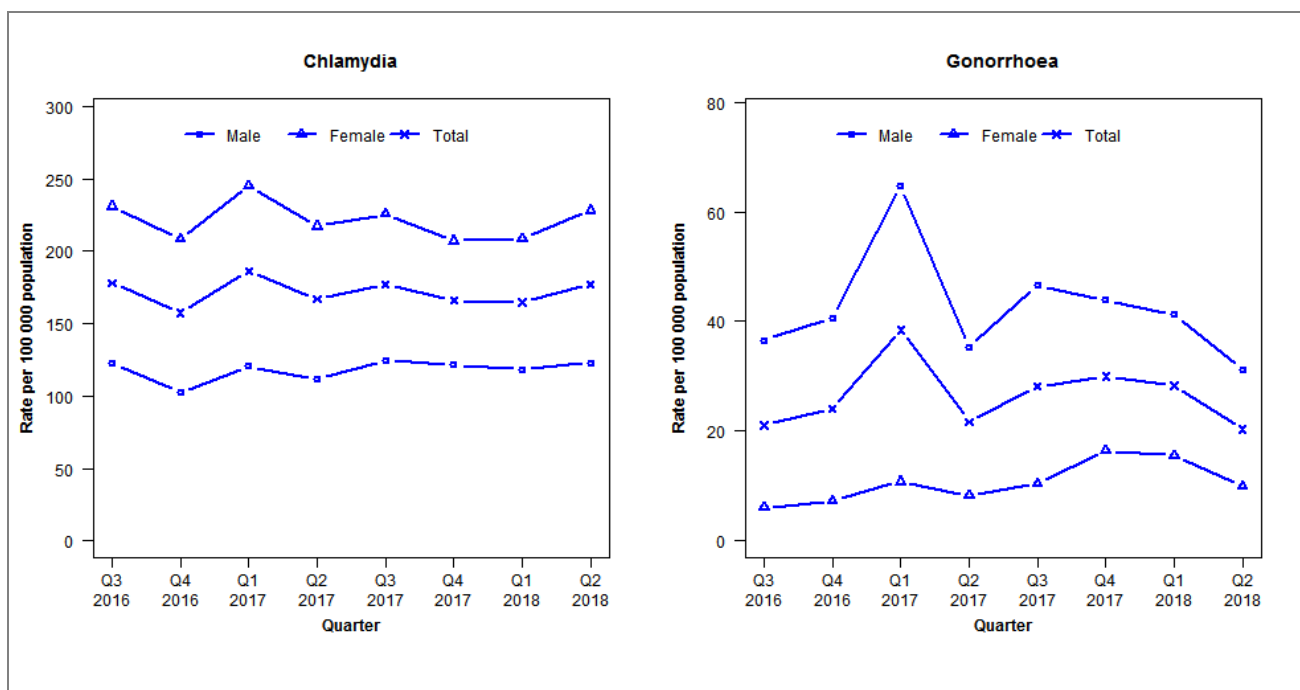


Laboratory surveillance of chlamydia and gonorrhoea: April - June 2018

Quarterly chlamydia and gonorrhoea rates (male, female and total¹ population), July 2016 to June 2018

¹Total includes cases where sex is not reported
Denominator = Statistics New Zealand mid-year population estimates

Note: Data processing methods allow for exclusion of repeat tests.

Number of lab confirmed chlamydia cases (male, female and total population) and number of tests per 100 000 population, July 2016 to June 2018

	Q3 2016	Q4 2016	Q1 2017	Q2 2017	Q3 2017	Q4 2017	Q1 2018	Q2 2018
Number of lab-confirmed cases¹	807	713	843	755	802	752	746	802
<i>Female</i>	535	483	568	503	523	480	483	529
<i>Male</i>	271	226	267	246	276	269	261	272
Tests per 100 000 population²	2626	2413	2807	2656	2850	2699	2910	2873

¹Total includes cases where sex is not reported
²Denominator = Statistics New Zealand mid-year population estimates

Number of lab confirmed gonorrhoea cases (female, male and total population) and number of tests per 100 000 population, July 2016 to June 2018

	Q3 2016	Q4 2016	Q1 2017	Q2 2017	Q3 2017	Q4 2017	Q1 2018	Q2 2018
Number of lab-confirmed cases¹	95	109	174	98	127	136	128	92
<i>Female</i>	14	17	25	19	24	38	36	23
<i>Male</i>	81	90	143	78	103	97	91	69
Tests per 100 000 population²	2627	2417	2828	2672	2872	2718	2929	2893

¹Total includes cases where sex is not reported
²Denominator = Statistics New Zealand mid-year population estimates