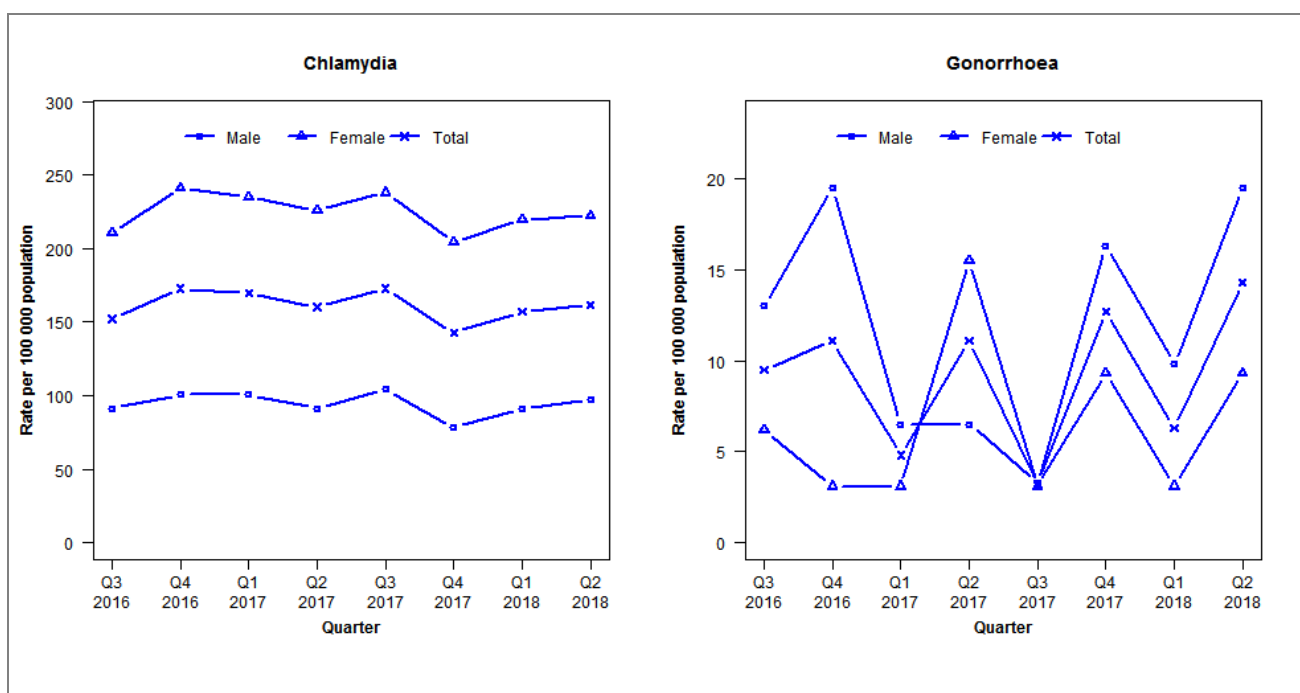


## Laboratory surveillance of chlamydia and gonorrhoea: April - June 2018

Quarterly chlamydia and gonorrhoea rates (male, female and total<sup>1</sup> population), July 2016 to June 2018



<sup>1</sup>Total includes cases where sex is not reported

Denominator = Statistics New Zealand mid-year population estimates

Note: Data processing methods allow for exclusion of repeat tests. Gonorrhoea rates for males and females are based on less than five cases in many quarters.

### Number of lab confirmed chlamydia cases (male, female and total population) and number of tests per 100 000 population, July 2016 to June 2018

	Q3 2016	Q4 2016	Q1 2017	Q2 2017	Q3 2017	Q4 2017	Q1 2018	Q2 2018
<b>Number of lab-confirmed cases<sup>1</sup></b>	96	109	107	101	109	90	99	102
<i>Female</i>	68	78	76	73	77	66	71	72
<i>Male</i>	28	31	31	28	32	24	28	30
<b>Tests per 100 000 population<sup>2</sup></b>	1853	1748	1834	1743	1848	1711	1786	1659

<sup>1</sup>Total includes cases where sex is not reported

<sup>2</sup>Denominator = Statistics New Zealand mid-year population estimates

### Number of lab confirmed gonorrhoea cases (female, male and total population) and number of tests per 100 000 population, July 2016 to June 2018

	Q3 2016	Q4 2016	Q1 2017	Q2 2017	Q3 2017	Q4 2017	Q1 2018	Q2 2018
<b>Number of lab-confirmed cases<sup>1</sup></b>	6	7	3	7	2	8	4	9
<i>Female</i>	2	1	1	5	1	3	1	3
<i>Male</i>	4	6	2	2	1	5	3	6
<b>Tests per 100 000 population<sup>2</sup></b>	2300	2156	2243	2217	2306	2106	2026	2183

<sup>1</sup>Total includes cases where sex is not reported

<sup>2</sup>Denominator = Statistics New Zealand mid-year population estimates