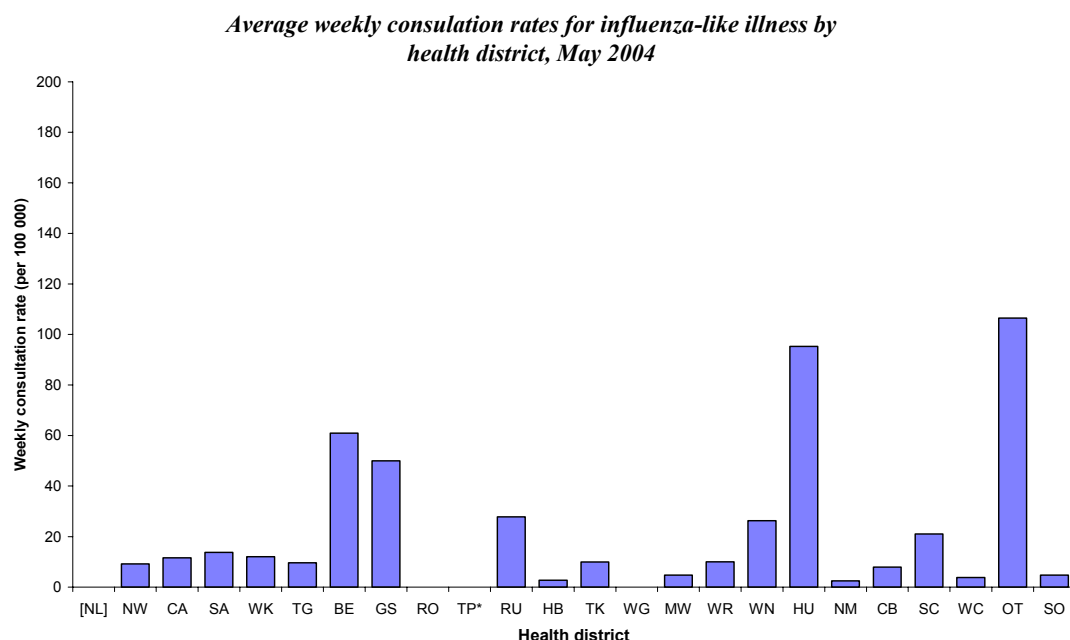


INFLUENZA SURVEILLANCE SUMMARY - MAY 2004

During May (weeks 18 – 22), 258 consultations for influenza-like illness were reported from 65 general practices (on average) in 22 out of 24 health districts. The average weekly consultation rate for May was 19.1 per 100 000 patient population.

Figure 1 compares the average weekly consultation rates for influenza-like illness for each health district during May. Otago had the highest consultation rate (106.4 per 100 000), followed by Hutt (95.2 per 100 000).

Figure 1



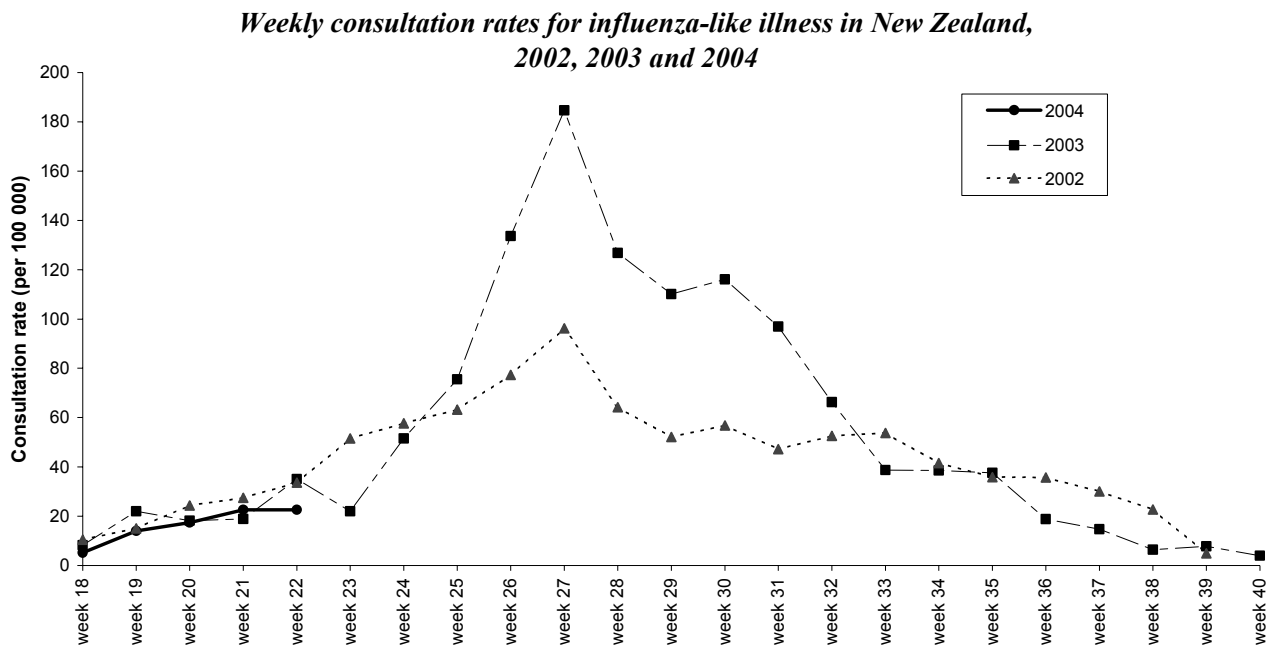
NB [] indicates no reports from the health district
* no sentinel practice to date

A total of 85 swabs were sent for testing during May from sentinel surveillance. Ninety-one influenza swabs were received by the regional virology laboratories. Of these, one was identified as influenza A/Fujian/411/2002 (H3N2)-like virus from the Hutt.

In addition, one influenza A virus (yet to be subtyped) from Central Auckland was identified from the laboratory-based (non-sentinel) surveillance in May.

Figure 2 shows the national weekly consultation rates to the end of week 22, May 2004 compared with 2003 and 2002.

Figure 2



Compiled by:

Liza Lopez
Population and Environmental Health
ESR Kenepuru Science Centre
PO Box 50 348
PORIRUA

phone: 04 914-0700
fax: 04 914-0770
website: www.esr.cri.nz
email: liza.lopez@esr.cri.nz