

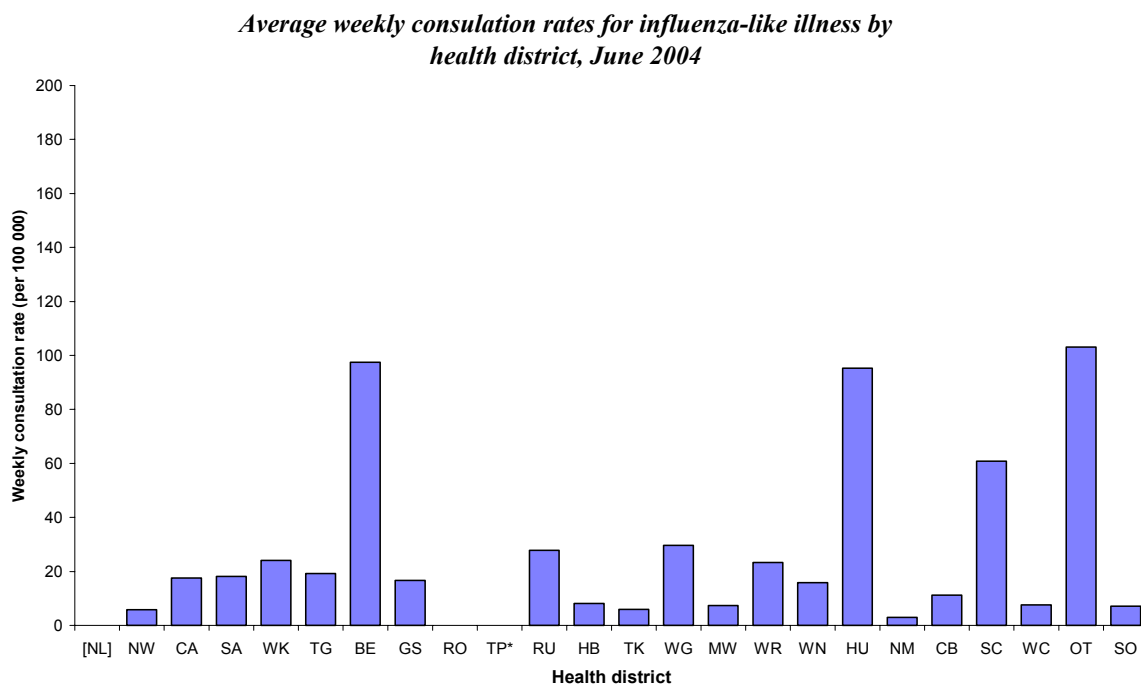
INFLUENZA SURVEILLANCE

SUMMARY - JUNE 2004

During June (weeks 23 – 26), 318 consultations for influenza-like illness were reported from 84 general practices (on average) in 22 out of 24 health districts. The average weekly consultation rate for June was 22.3 per 100 000 patient population.

Figure 1 compares the average weekly consultation rates for influenza-like illness for each health district during June. Otago had the highest consultation rate (103.1 per 100 000), followed by Eastern Bay of Plenty (97.5 per 100 000).

Figure 1



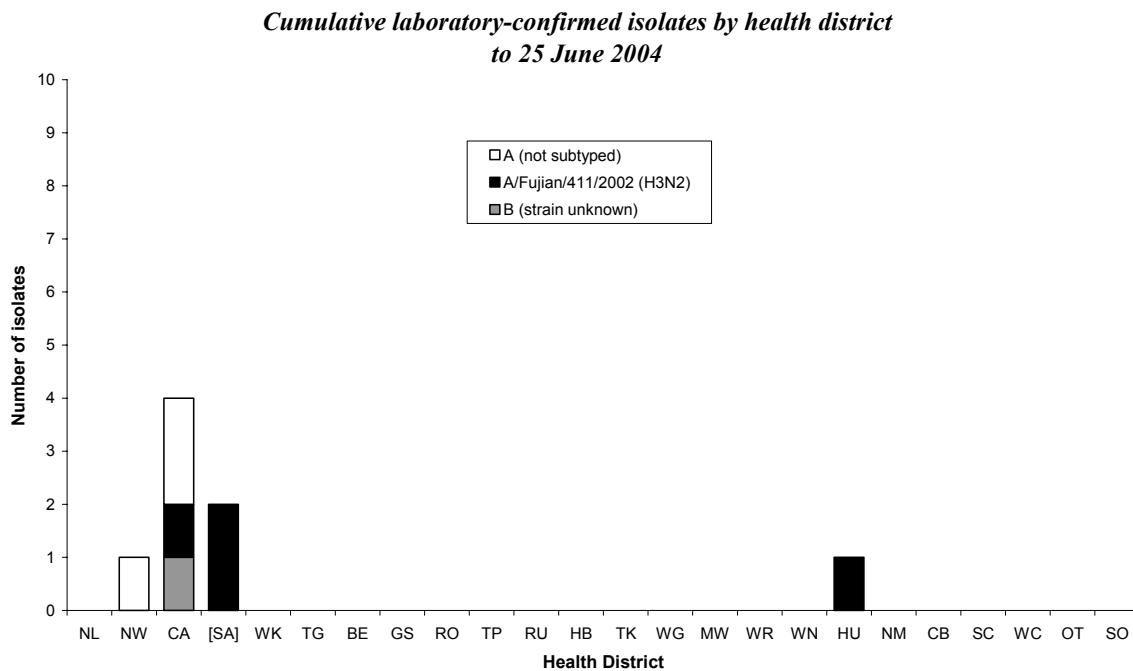
NB [] indicates no reports from the health district
 * no sentinel practice to date

A total of 83 swabs were sent for testing during June from sentinel surveillance. Seventy-five influenza swabs were received by the regional virology laboratories. Of these, one was identified as influenza A virus (yet to be subtyped) from North West Auckland.

In addition, two influenza viruses were reported for the laboratory-based (non-sentinel) in June. The isolates were identified as A/Fujian/411/2002 (H3N2), and influenza A (yet to be subtyped) from Central Auckland.

Figure 2 shows the cumulative total of influenza isolates confirmed (sentinel and laboratory-based surveillance) to the end of week 26, June 2004. A total of eight isolates were identified. Of these, four were subtyped as A/Fujian/411/2002 (H3N2), three as influenza A (yet to be subtyped), and one as influenza B.

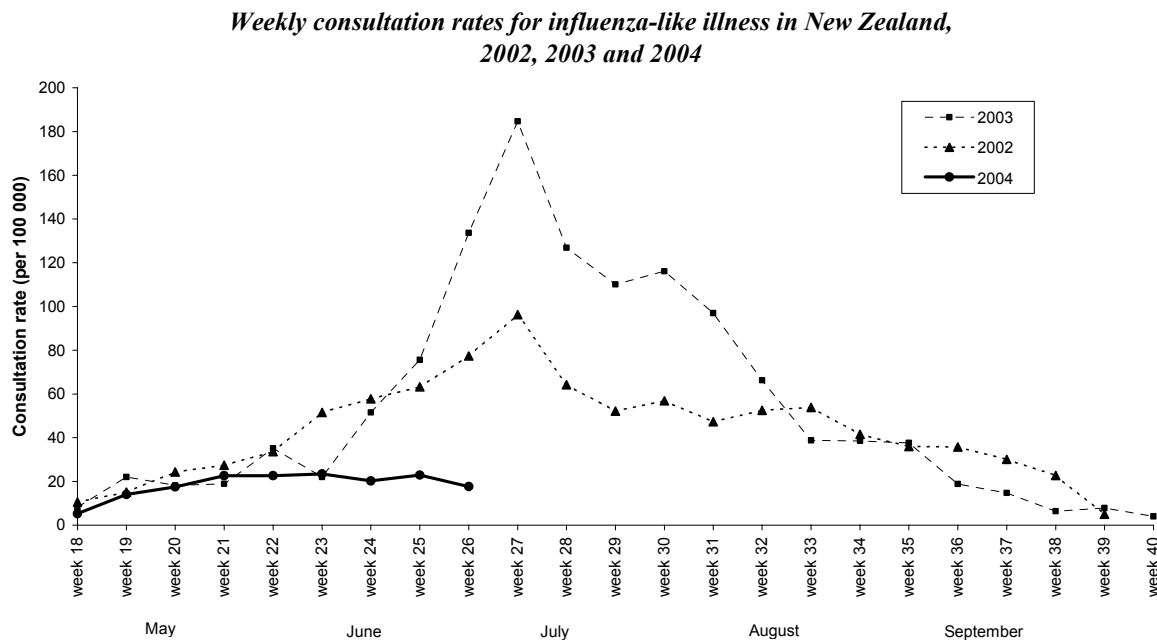
Figure 2



[] The two A/Fujian/411/2002 (H3N2) viruses reported from South Auckland were specimens taken in March.

Figure 3 shows the national weekly consultation rates to the end of week 26, June 2004 compared with 2003 and 2002.

Figure 3



Compiled by:

Liza Lopez
 Population and Environmental Health
 ESR Kenepuru Science Centre
 PO Box 50 348
 PORIRUA

phone: 04 914-0700
 fax: 04 914-0770
 website: www.esr.cri.nz
 email: liza.lopez@esr.cri.nz