

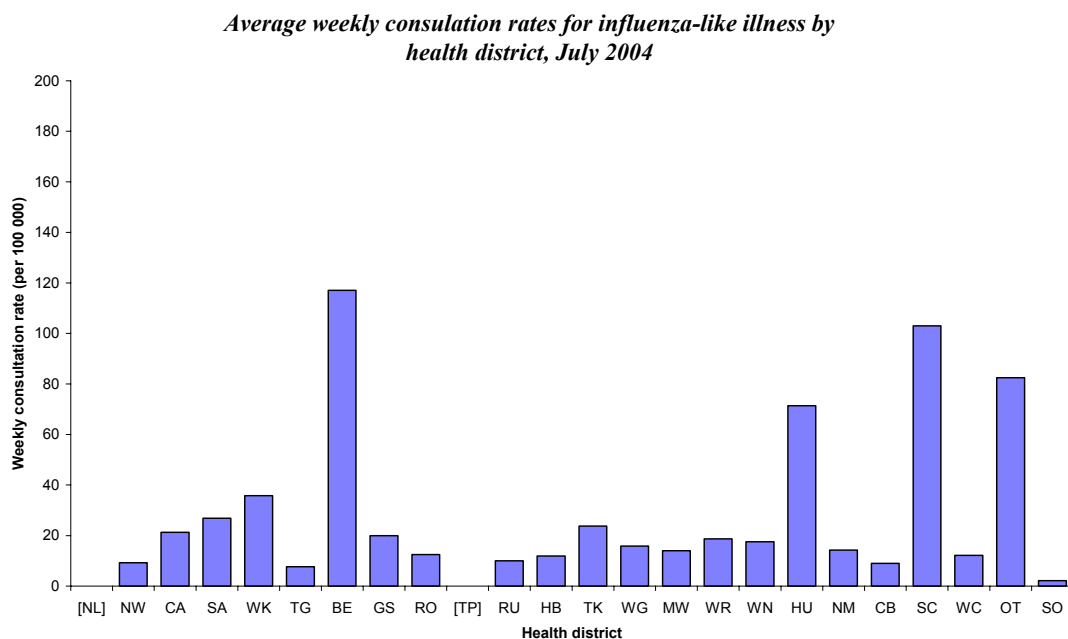
INFLUENZA SURVEILLANCE

SUMMARY - JULY 2004

During July (weeks 27 – 31), 448 consultations for influenza-like illness were reported from 82 general practices (on average) in 22 out of 24 health districts. The average weekly consultation rate for July was 25.6 per 100 000 patient population.

Figure 1 compares the average weekly consultation rates for influenza-like illness for each health district during July. Eastern Bay of Plenty had the highest consultation rate (117.0 per 100 000), followed by South Canterbury (103.0 per 100 000).

Figure 1



NB [] Health Districts not participating

A total of 112 swabs were sent for testing during July from sentinel surveillance. One hundred and four influenza swabs were received by the regional virology laboratories. Of these, one was identified as influenza A virus (yet to be subtyped) from Canterbury.

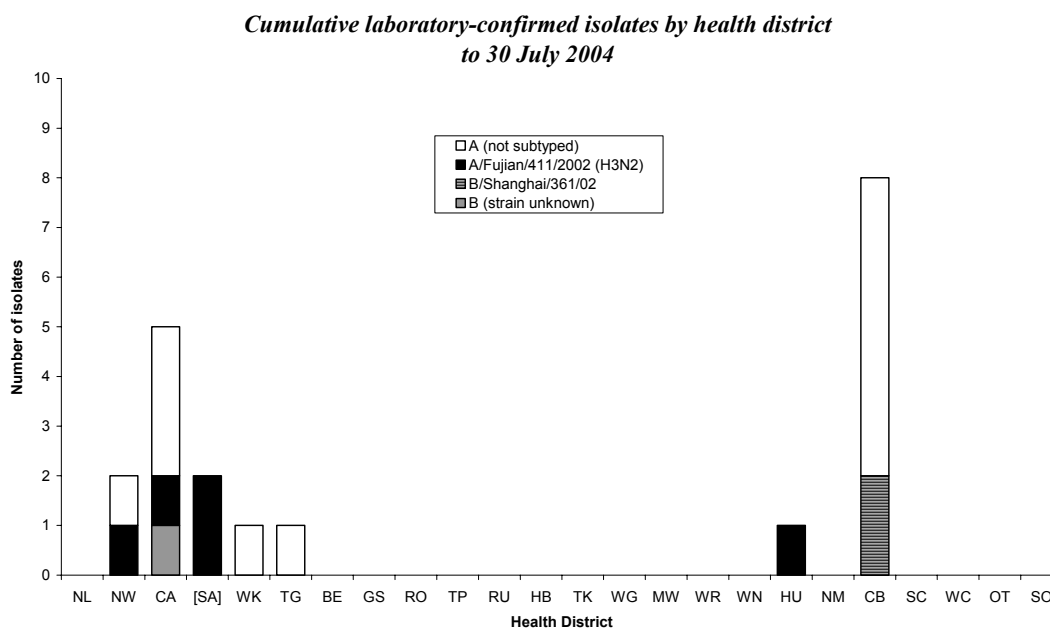
In addition, 10 influenza viruses were reported for the laboratory-based (non-sentinel) in July. Of these, eight were identified as influenza A (yet to be subtyped), and two as influenza B/Shanghai/361/02-like. The distribution by health district for the month of July is shown in Table 1.

	CA	WK	CB	TG	Total
A (untyped)	1	1	5	1	8
B/Shanghai/361/02-like	0	0	2	0	2
Total	1	1	7	1	10

Figure 2 shows the cumulative total of influenza isolates confirmed (sentinel and laboratory-based surveillance) to the end of week 31, July 2004. A total of 20 isolates were identified. Of these, 12

were influenza A (yet to be subtyped), five were subtyped as A/Fujian/411/2002 (H3N2), two as B/Shanghai/361/02-like and one as influenza B (yet to be typed).

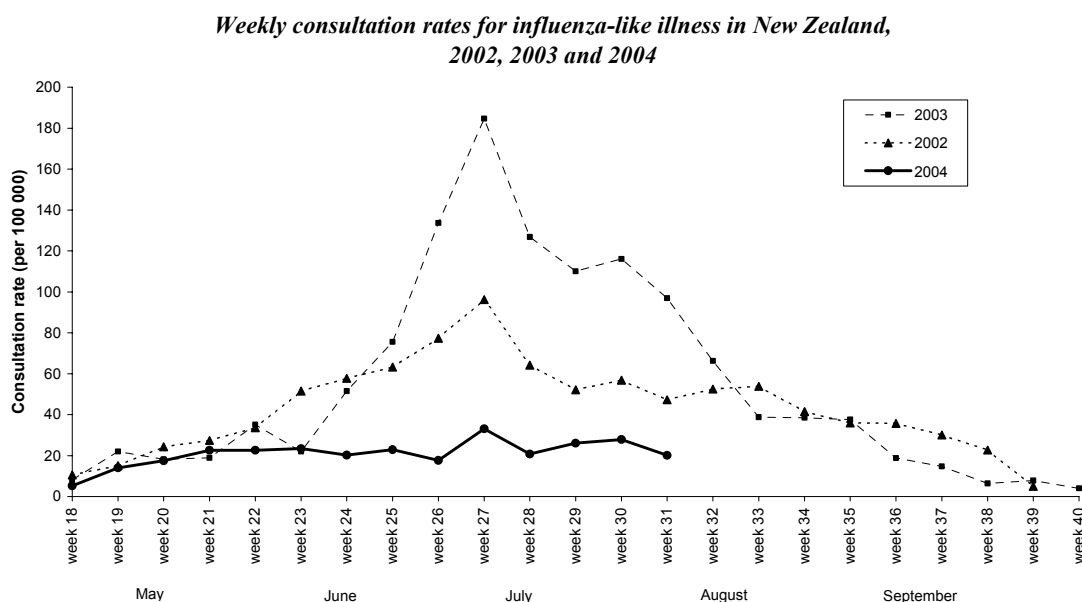
Figure 2



[] The two A/Fujian/411/2002 (H3N2) viruses reported from South Auckland were specimens taken in March.

Figure 3 shows the national weekly consultation rates to the end of week 31, July 2004 compared with 2003 and 2002.

Figure 3



Compiled by:

Liza Lopez
 Population and Environmental Health
 ESR Kenepuru Science Centre
 PO Box 50 348
 PORIRUA

phone: 04 914-0700
 fax: 04 914-0770
 website: www.esr.cri.nz
 email: liza.lopez@esr.cri.nz