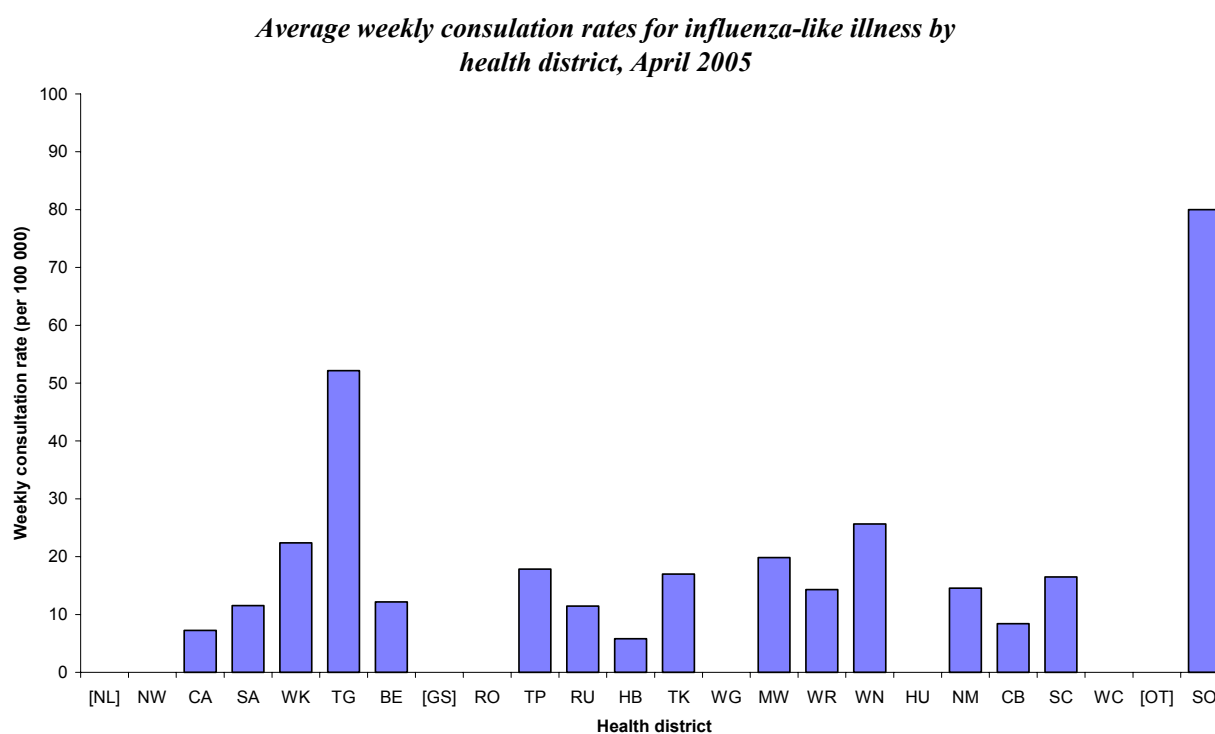


# INFLUENZA SURVEILLANCE SUMMARY - APRIL 2005

During April (weeks 14 – 17), 138 consultations for influenza-like illness were reported from 62 general practices (on average) in 21 out of 24 health districts. The average weekly consultation rate for April was 14.2 per 100 000 patient population.

Figure 1 compares the average weekly consultation rates for influenza-like illness for each health district during April. Southland had the highest consultation rate (80.0 per 100 000), followed by Tauranga (52.2 per 100 000).

Figure 1



NB [ ] Health district not participating

A total of 41 swabs were sent for testing during April from sentinel surveillance. Forty-three influenza swabs were received by the regional virology laboratories. Of these, six were influenza B viruses, three B/Hong Kong/330/2001-like, two influenza B (yet to be antigenically typed), and one B/Shanghai/361/2002-like reported from the sentinel surveillance. The distribution by health district is shown in Table 1.

Table 1

	WN	CB	Total
B	1	1	2
B/Hong Kong/330/2001-like	3	0	3
B/Shanghai/361/2002-like	1	0	1
<b>Total</b>	<b>5</b>	<b>1</b>	<b>6</b>

In addition, 10 influenza viruses were reported from the laboratory-based (non-sentinel) surveillance in April. Of these, six were influenza B (yet to be antigenically typed), two influenza A (yet to be sub-typed), one A/California/7/2004 (H3N2)-like, and one B/Shanghai/361/2002-like viruses. The distribution by health district is shown in Table 2.

Table 2

	CA	WK	TG	CB	Total
A	2	0	0	0	2
A/California/7/2004 (H3N2)-like	0	1	0	0	1
B	2	0	1	3	6
B/Shanghai/361/2002-like	0	1	0	0	1
<b>Total</b>	<b>4</b>	<b>2</b>	<b>1</b>	<b>3</b>	<b>10</b>

Figure 2 shows the cumulative total of influenza isolates confirmed (sentinel and laboratory-based surveillance) to the end of week 17, April 2005. A total of 16 isolates were identified. Of these, eight were influenza B (yet to be antigenically typed), three B/Hong Kong/330/2001-like, two B/Shanghai/361/2002-like, two influenza A (yet to be sub-typed), and one A/California/7/2004 (H3N2)-like viruses.

Figure 2

*Cumulative laboratory-confirmed isolates by health district, April 2005*

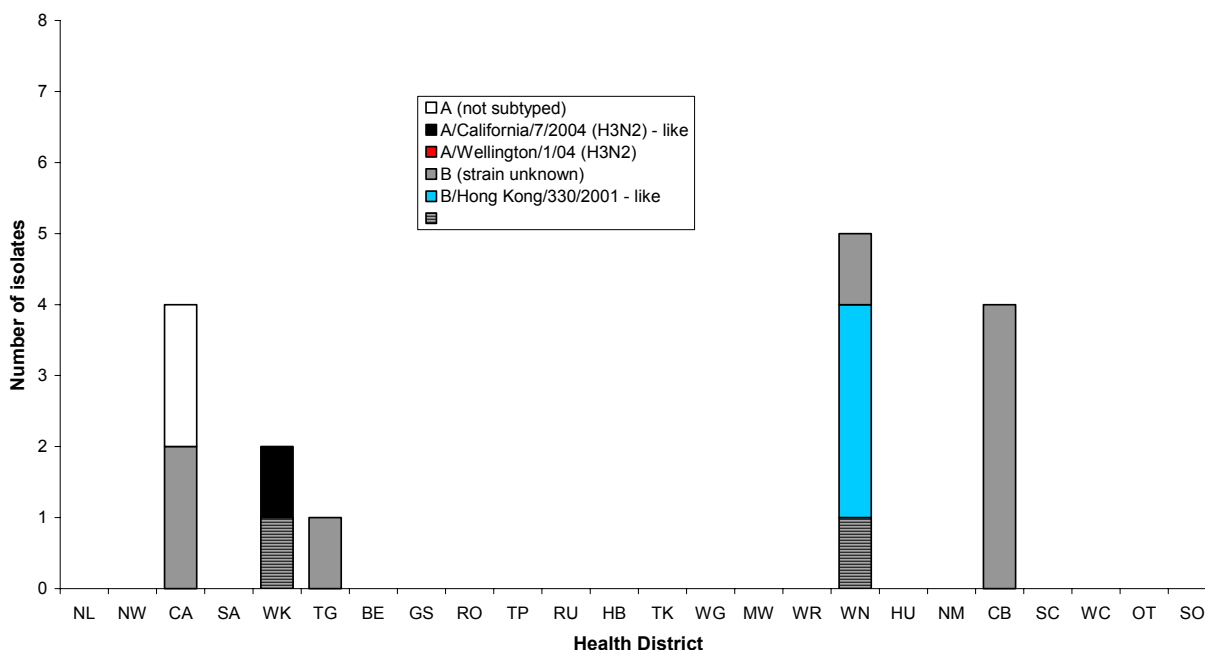


Figure 3 shows the national weekly consultation rates to the end of week 17, April 2005 and rates in 2004 and 2003.

Figure 3

*Weekly consultation rates for influenza-like illness in New Zealand, 2003, 2004 and 2005*

