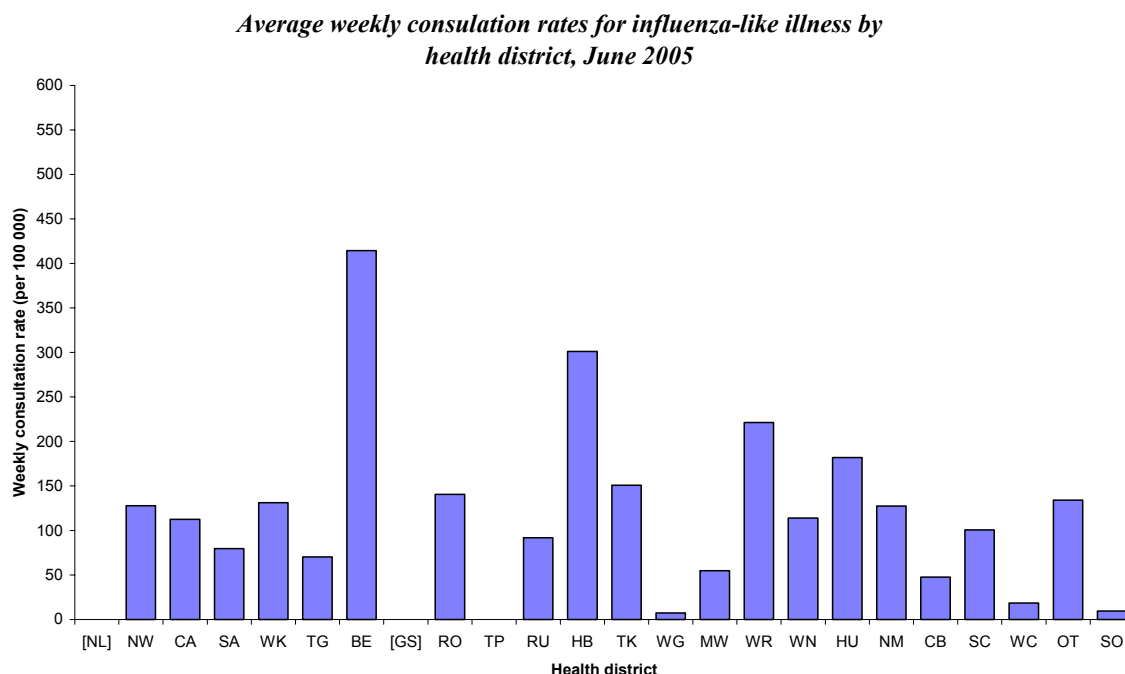


INFLUENZA SURVEILLANCE SUMMARY - JUNE 2005

During June (weeks 22 – 25), 1349 consultations for influenza-like illness were reported from 79 general practices (on average) in 21 out of 24 health districts. The average weekly consultation rate for June was 111.4 per 100 000 patient population.

Figure 1 compares the average weekly consultation rates for influenza-like illness for each health district during June. Eastern Bay of Plenty had the highest consultation rate (414.4 per 100 000), followed by Hawke’s Bay (301.1 per 100 000).

Figure 1



NB [] Health districts not participating

A total of 288 swabs were sent for testing during June from sentinel surveillance. Two hundred and seventy-eight influenza swabs were received by the regional virology laboratories. Of these, 121 influenza viruses were identified, 97 as B/Hong Kong/330/2001-like, 12 as influenza B (yet to be antigenically typed), 11 as B/Shanghai/361/2002-like, and one as A/California/7/2004-like. The distribution by health district is shown in Table 1.

Table 1

	NW	CA	SA	WK	TG	BE	RO	TK	HB	WG	WR	WN	HU	NM	WC	CB	SC	OT	SO	Total
A/California/7/2004 (H3N2) - like	0	0	0	0	0	0	0	0	0	0	0	0	0	0	0	1	0	0	0	1
B	1	2	0	7	0	0	0	0	0	0	0	0	0	0	0	2	0	0	0	12
B/Hong Kong/330/2001 - like	11	11	5	11	3	5	2	4	7	1	1	10	0	7	2	15	1	0	1	97
B/Shanghai/361/2002-like	0	1	1	3	0	2	0	0	1	0	0	1	1	0	0	0	0	1	0	11
Total	12	14	6	21	3	7	2	4	8	1	1	11	1	7	2	18	1	1	1	121

In addition, 243 influenza viruses were reported from the laboratory-based (non-sentinel) surveillance in June. Of these, 126 were identified as B/Hong Kong/330/2001-like, 74 as influenza B (yet to be antigenically typed), 23 as B/Shanghai/361/2002-like, 14 as B/Sichuan/379/99-like, three as A/California/7/2004-like, two as A/Wellington/1/2004-like, and one as influenza A (yet to be sub-typed). The distribution by health district is shown in Table 2.

Table 2

	NL	NW	CA	SA	WK	TK	HB	MW	HU	WC	CB	SC	OT	Total
A	0	0	0	0	0	0	0	0	0	0	1	0	0	1
A/California/7/2004 (H3N2) - like	0	0	0	0	0	0	0	0	0	0	3	0	0	3
A/Wellington/1/2004 (H3N2) -like	0	0	0	0	0	0	0	0	0	0	2	0	0	2
B	0	0	7	0	51	1	7	0	0	0	8	0	0	74
B/Hong Kong/330/2001 - like	3	3	23	3	46	0	3	1	2	1	38	3	0	126
B/Shanghai/361/2002-like	0	0	3	0	19	0	0	0	0	0	0	0	1	23
B/Sichuan/379/99 - like	1	0	0	0	0	0	0	0	0	0	13	0	0	14
Total	4	3	33	3	116	1	10	1	2	1	65	3	1	243

Figure 2 shows the cumulative total of influenza isolates confirmed (sentinel and laboratory-based surveillance) for June 2005. A total of 364 viruses were identified, 223 as B/Hong Kong/330/2001-like, 86 as influenza B (yet to be antigenically typed), 34 as B/Shanghai/361/2002-like, 14 as B/Sichuan/379/99-like (belonging to B/Shanghai lineage), four as A/California/7/2004-like, two as A/Wellington/1/2004-like, and one as influenza A (yet to be sub-typed).

Figure 2

Cumulative laboratory-confirmed isolates by health district, June 2005

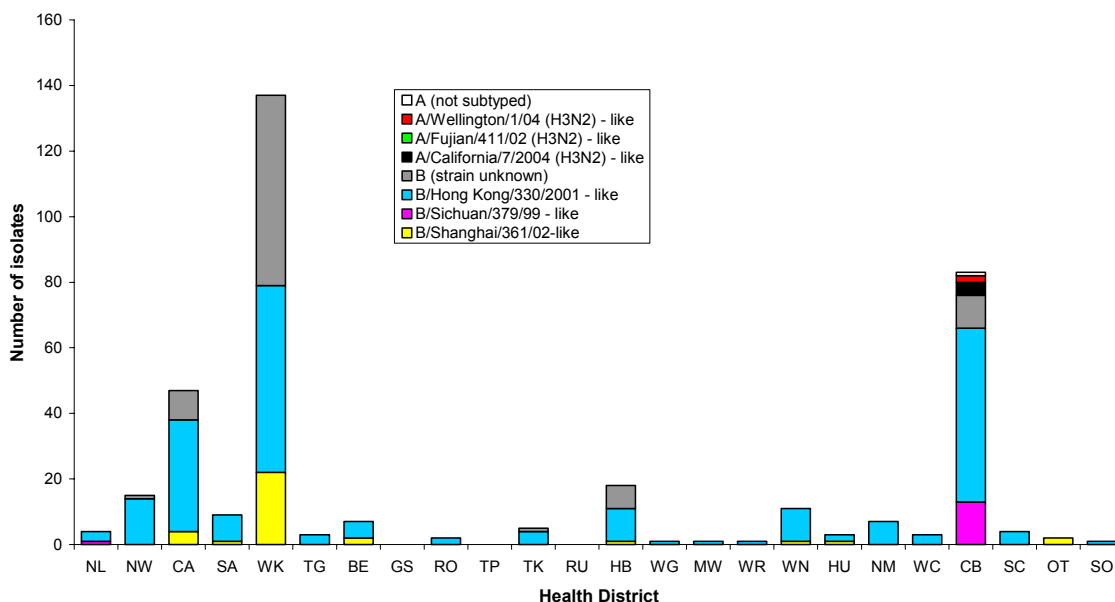
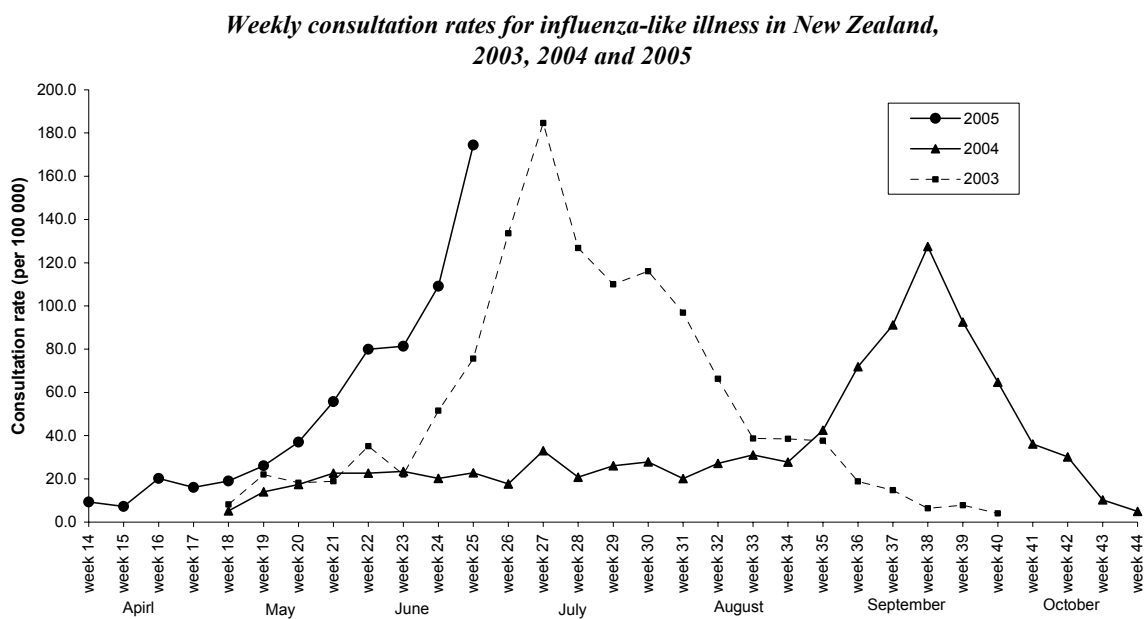


Figure 3 shows the national weekly consultation rates to the end of week 25, June 2005 and rates in 2004 and 2003.

Figure 3



Compiled by: Liza Lopez
 Population and Environmental Health
 ESR Kenepuru Science Centre
 PO Box 50 348
 PORIRUA

phone: 04 914-0647
 fax: 04 914-0770
 email: liza.lopez@esr.cri.nz