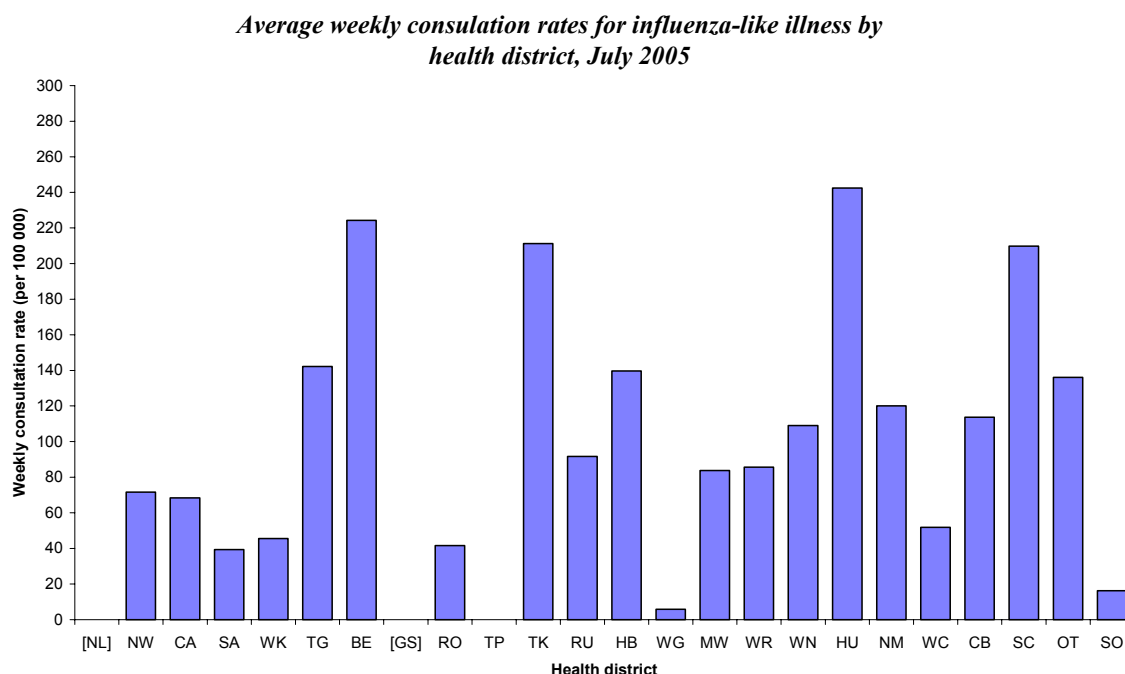


INFLUENZA SURVEILLANCE SUMMARY - JULY 2005

During July (week 26 – 30), 1428 consultations for influenza-like illness were reported from 75 general practices (on average) in 21 out of 24 health districts. The average weekly consultation rate for July was 97.0 per 100 000 patient population.

Figure 1 compares the average weekly consultation rates for influenza-like illness for each health district during July. Hutt had the highest consultation rate (242.4 per 100 000), followed by Eastern Bay of Plenty (224.3 per 100 000).

Figure 1



NB [] Health districts not participating

A total of 262 swabs were sent for testing during July from sentinel surveillance. Three hundred and thirty-seven influenza swabs were received by the regional virology laboratories. Of these, 70 influenza viruses were identified, 55 as B/Hong Kong/330/2001-like, seven as B/Shanghai/361/2002-like, six as A/California/7/2004-like, and two as influenza B (yet to be antigenically typed). The distribution by health district is shown in Table 1.

Table 1

	NW	CA	SA	WK	TG	TK	HB	MW	WR	WN	HU	NM	WC	CB	OT	SO	Total
A/California/7/2004 (H3N2) - like	0	0	0	0	0	0	1	0	0	4	0	0	0	0	1	0	6
B	0	0	0	0	0	0	0	0	0	0	0	0	0	0	2	0	2
B/Hong Kong/330/2001 - like	1	2	2	5	2	2	0	2	0	2	2	5	2	15	12	1	55
B/Shanghai/361/2002-like	0	0	0	3	0	0	0	0	1	2	1	0	0	0	0	0	7
Total	1	2	2	8	2	2	1	2	1	8	3	5	2	15	15	1	70

In addition, 160 influenza viruses were reported from the laboratory-based (non-sentinel) surveillance in July. Of these, 116 were identified as B/Hong Kong/330/2001-like, 17 as A/California/7/2004-like, 13 as influenza B (yet to be antigenically typed), seven as B/Sichuan/379/1999-like, four as B/Shanghai/361/2002-like, two as influenza A (yet to be sub-typed), and one as A/New Caledonia/20/1999-like. The distribution by health district is shown in Table 2.

Table 2

	CA	SA	WK	TK	HB	MW	WN	NM	CB	SC	SO	Total
A	0	0	0	0	0	0	0	0	1	1	0	2
A/California/7/2004 (H3N2) - like	0	1	0	0	0	0	0	0	16	0	0	17
A/New Caledonia/20/1999 (H1N1) - like	0	0	0	0	0	0	0	0	1	0	0	1
B	1	1	1	0	2	0	1	0	6	0	1	13
B/Hong Kong/330/2001 - like	6	0	34	0	0	1	0	2	72	1	0	116
B/Shanghai/361/2002 - like	0	0	4	0	0	0	0	0	0	0	0	4
B/Sichuan/379/1999 - like	0	0	0	1	1	0	0	0	5	0	0	7
Total	7	2	39	1	3	1	1	2	101	2	1	160

Figure 2 shows the cumulative total of influenza isolates confirmed (sentinel and laboratory-based surveillance) for July 2005. A total of 230 viruses were identified, 171 as B/Hong Kong/330/2001-like, 15 as influenza B (yet to be antigenically typed), 11 as B/Shanghai/361/2002-like, seven as B/Sichuan/379/99-like (belonging to B/Shanghai lineage), 23 as A/California/7/2004-like, two as influenza A (yet to be sub-typed), and one as A/New Caledonia/20/1999-like.

Figure 2

Cumulative laboratory-confirmed isolates by health district, July 2005

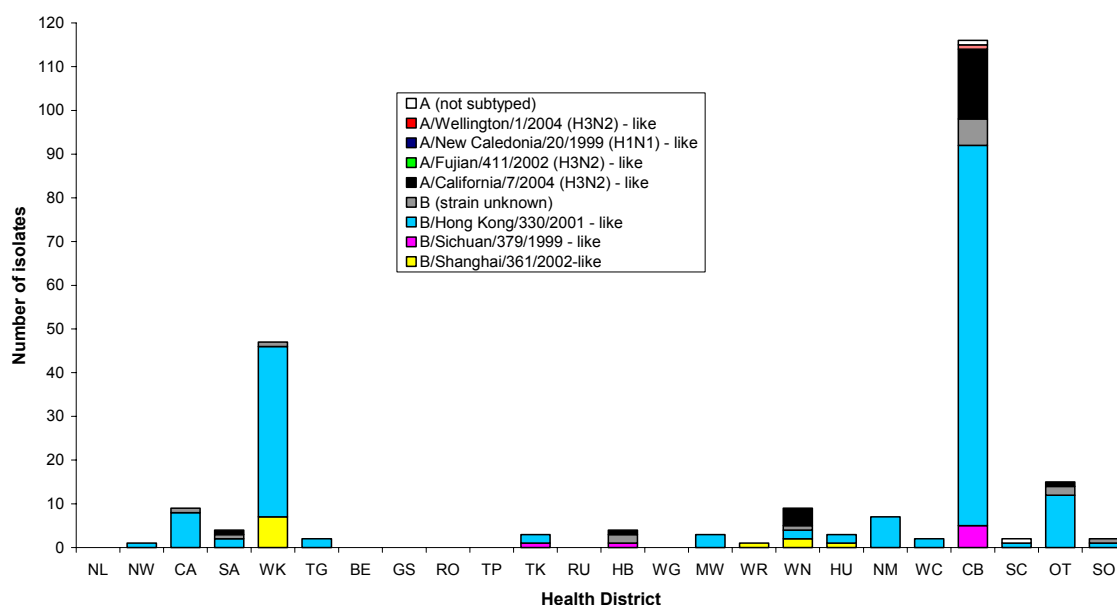
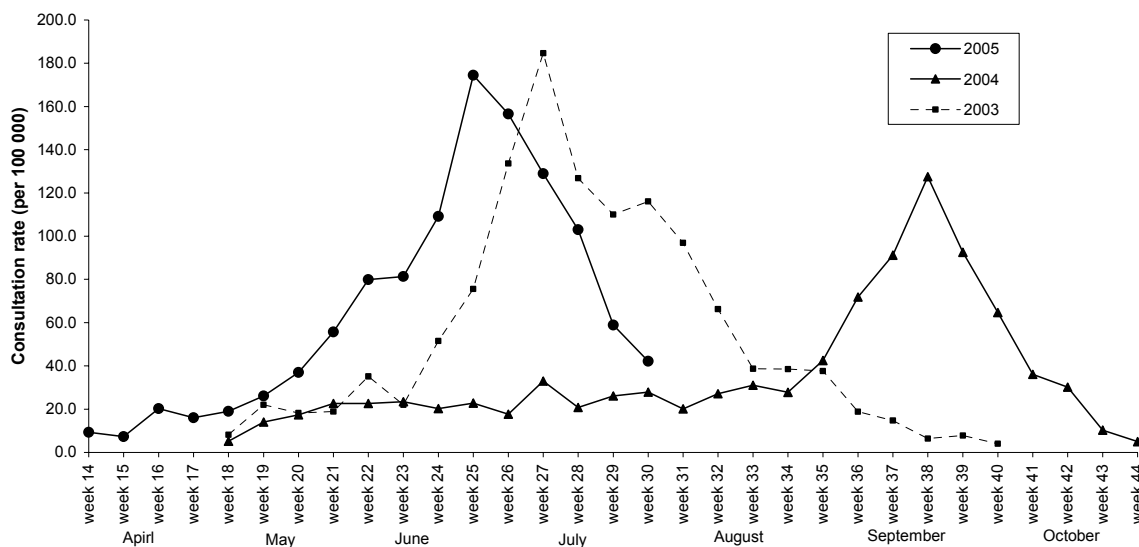


Figure 3 shows the national weekly consultation rates to the end of week 30, July 2005 and rates in 2004 and 2003.

Figure 3

Weekly consultation rates for influenza-like illness in New Zealand, 2003, 2004 and 2005



Compiled by:

Liza Lopez
 Population and Environmental Health
 ESR Kenepuru Science Centre
 PO Box 50 348
 PORIRUA

phone: 04 914-0647
 fax: 04 914-0770
 email: liza.lopez@esr.cri.nz