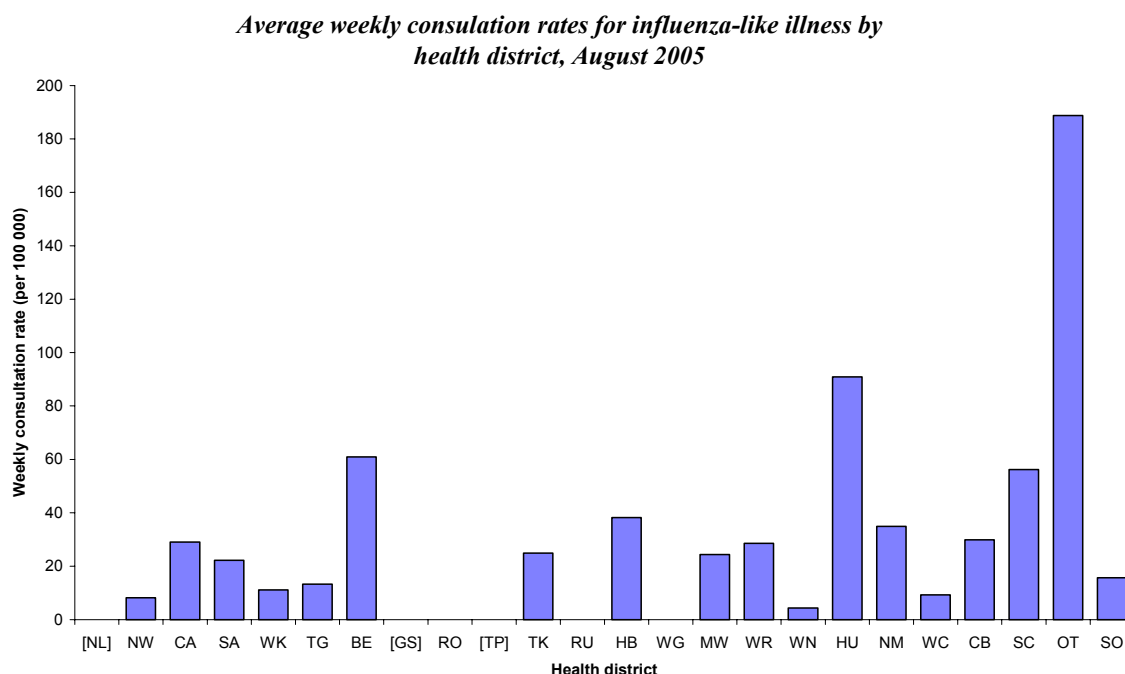


INFLUENZA SURVEILLANCE SUMMARY - AUGUST 2005

During August (weeks 31 – 34), 383 consultations for influenza-like illness were reported from 78 general practices (on average) in 21 out of 24 health districts. The average weekly consultation rate for August was 32.4 per 100 000 patient population.

Figure 1 compares the average weekly consultation rates for influenza-like illness for each health district during August. Otago had the highest consultation rate (188.8 per 100 000), followed by Hutt (90.9 per 100 000).

Figure 1



NB [] Health districts not participating

A total of 80 swabs were sent for testing during August from sentinel surveillance. One hundred influenza swabs were received by the regional virology laboratories. Of these, 14 influenza viruses were identified, seven as A/California/7/2004-like, five as B/Hong Kong/330/2001-like, one as influenza A (yet to be sub-typed) and one as B/Sichuan/379/1999-like. The distribution by health district is shown in Table 1.

Table 1

	CA	WK	BE	WN	NM	CB	OT	SO	Total
A	1	0	0	0	0	0	0	0	1
A/California/7/2004 (H3N2) - like	2	0	1	2	0	0	0	2	7
B/Hong Kong/330/2001 - like	0	1	0	0	1	2	1	0	5
B/Sichuan/379/1999 - like	0	0	0	0	0	1	0	0	1
Total	3	1	1	2	1	3	1	2	14

In addition, 44 influenza viruses were reported from the laboratory-based (non-sentinel) surveillance in August. Of these, 14 were identified as influenza A (yet to be sub-typed), 13 as A/California/7/2004-like, 11 as influenza B (yet to be antigenically typed), three as B/Hong Kong/330/2001-like, two as A/New Caledonia/20/1999-like, and one as B/Shanghai/361/2002-like. The distribution by health district is shown in Table 2.

Table 2

	CA	WK	CB	OT	Total
A	0	4	10	0	14
A/California/7/2004 (H3N2) - like	2	7	3	1	13
A/New Caledonia/20/1999 (H1N1) - like	0	2	0	0	2
B	0	1	10	0	11
B/Hong Kong/330/2001 - like	0	1	2	0	3
B/Shanghai/361/2002 - like	1	0	0	0	1
Total	3	15	25	1	44

Figure 2 shows the cumulative total of influenza isolates confirmed (sentinel and laboratory-based surveillance) for August 2005. A total of 58 viruses were identified, eight as B/Hong Kong/330/2001-like, 11 as influenza B (yet to be antigenically typed), one as B/Shanghai/361/2002-like, one as B/Sichuan/379/99-like (belonging to B/Shanghai lineage), 20 as A/California/7/2004-like, 15 as influenza A (yet to be subtyped), and two as A/New Caledonia/20/1999-like.

Figure 2

Cumulative laboratory-confirmed isolates by health district, August 2005

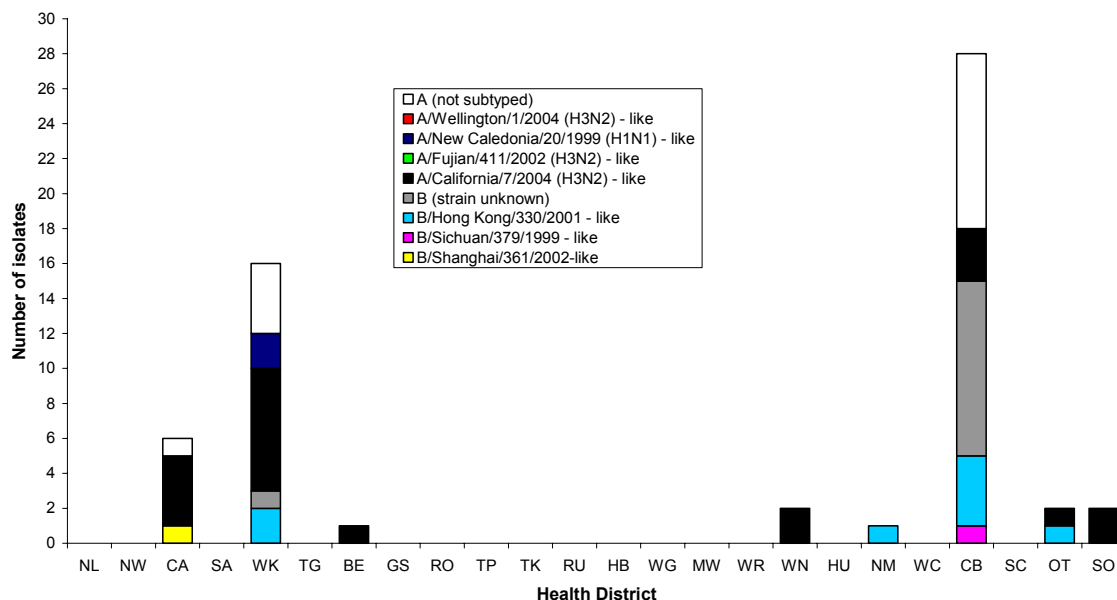
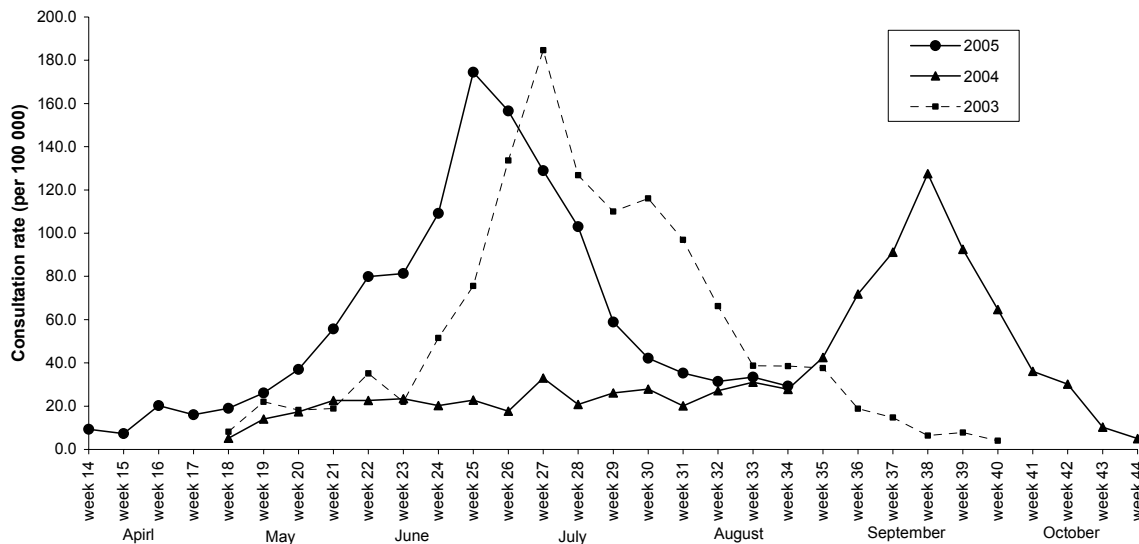


Figure 3 shows the national weekly consultation rates to the end of week 30, August 2005 and rates in 2004 and 2003.

Figure 3

Weekly consultation rates for influenza-like illness in New Zealand, 2003, 2004 and 2005



Compiled by: Liza Lopez
 Population and Environmental Health
 ESR Kenepuru Science Centre
 PO Box 50 348
 PORIRUA

phone: 04 914-0647
 fax: 04 914-0770
 email: liza.lopez@esr.cri.nz