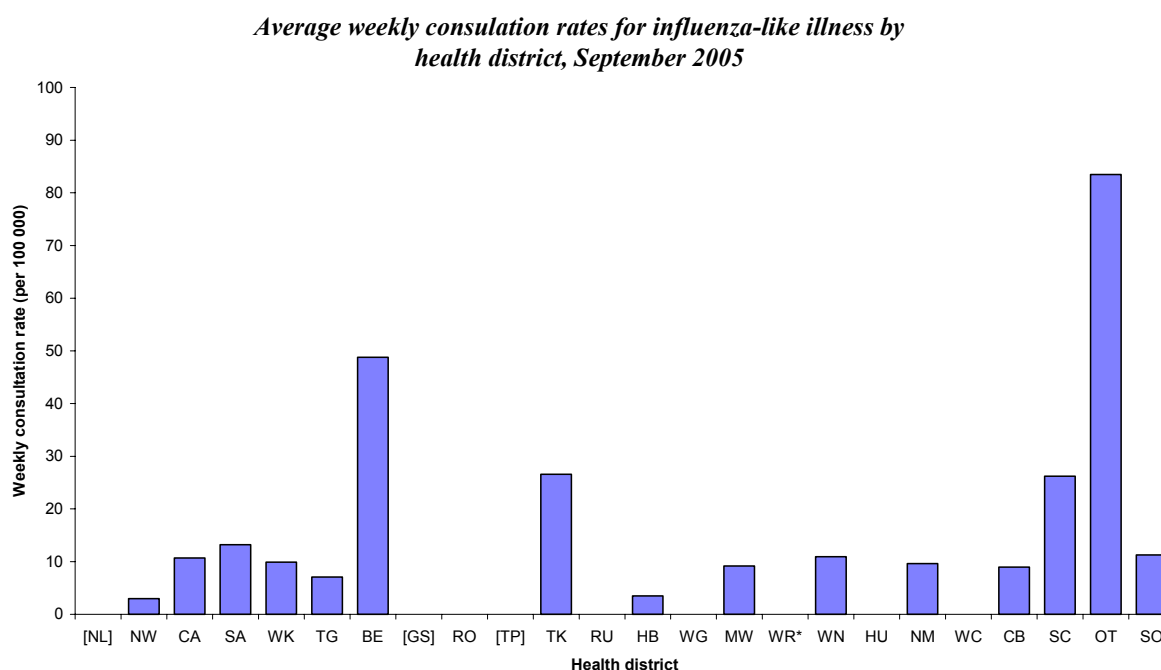


INFLUENZA SURVEILLANCE SUMMARY - SEPTEMBER 2005

During September (weeks 35-39), 207 consultations for influenza-like illness were reported from 75 general practices (on average) in 20 out of 24 health districts. The average weekly consultation rate for September was 14.5 per 100 000 patient population.

Figure 1 compares the average weekly consultation rates for influenza-like illness for each health district during September. Otago had the highest consultation rate (83.5 per 100 000), followed by Eastern Bay of Plenty (48.8 per 100 000).

Figure 1



NB [] Health districts not participating
* Health district did not participate for the month

A total of 53 swabs were sent for testing during September from sentinel surveillance. Sixty-seven influenza swabs were received by the regional virology laboratories. Of these, six influenza viruses were identified, four as A/New Caledonia/20/1999 (H1N1)-like and two as B/Hong Kong/330/2001-like. The distribution by health district is shown in Table 1.

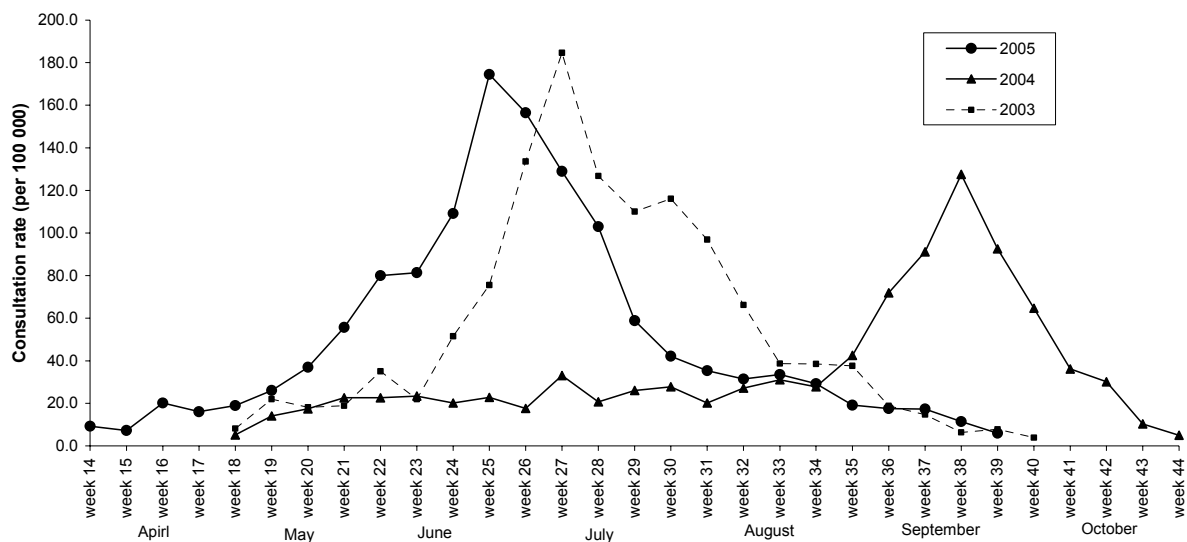
Table 1

	WN	HU	OT	Total
A/New Caledonia/20/1999 (H1N1) - like	2	1	1	4
B/Hong Kong/330/2001 - like	0	0	2	2
Total	2	1	3	6

Figure 3 shows the national weekly consultation rates to the end of week 39, September 2005 and rates in 2004 and 2003.

Figure 3

Weekly consultation rates for influenza-like illness in New Zealand, 2003, 2004 and 2005



Compiled by: Liza Lopez
 Population and Environmental Health
 ESR Kenepuru Science Centre
 PO Box 50 348
 PORIRUA

phone: 04 914-0647
 fax: 04 914-0770
 email: liza.lopez@esr.cri.nz