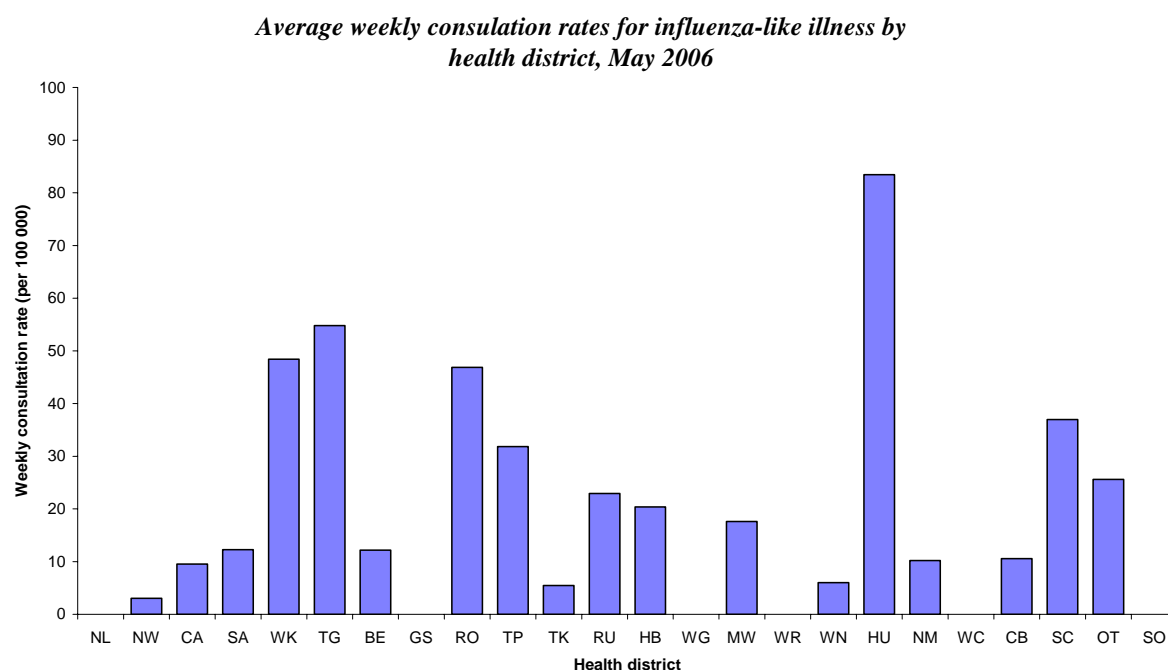


# INFLUENZA SURVEILLANCE SUMMARY - MAY 2006

During May (weeks 18 – 21), 222 consultations for influenza-like illness were reported from 64 general practices (on average) in 21 out of 24 health districts. The average weekly consultation rate for May was 19.1 per 100 000 patient population.

Figure 1 compares the average weekly consultation rates for influenza-like illness for each health district during May. Hutt had the highest consultation rate (83.5 per 100 000), followed by Tauranga (54.8 per 100 000).

**Figure 1**



A total of 75 swabs were sent for testing during May from sentinel surveillance. Sixty-eight influenza swabs were received by the regional virology laboratories. Of these, five influenza viruses were isolated, three as A/New York/55/2004 (H3N2) - like, one as A/California/7/2004 (H3N2) - like, and one as influenza B/Shanghai/361/2002-like. The distribution by health district is shown in Table 1.

**Table 1**

	WK	TG	WN	HU	Total
A/California/7/2004 (H3N2) - like	0	0	1	0	1
A/New York/55/2004 (H3N2) - like	0	1	1	1	3
B/Shanghai/361/2002-like	1	0	0	0	1
<b>Total</b>	<b>1</b>	<b>1</b>	<b>2</b>	<b>1</b>	<b>5</b>

In addition, 10 influenza viruses were reported from the laboratory-based (non-sentinel) surveillance in May, eight as influenza A (yet to be sub-typed), and two as A/New York/55/2004 (H3N2) – like. The distribution by health district is shown in Table 2.

Table 2

	NW	WK	CB	Total
A	1	5	2	8
A/New York/55/2004 (H3N2) - like	0	2	0	2
<b>Total</b>	<b>1</b>	<b>7</b>	<b>2</b>	<b>10</b>

Figure 2 shows the cumulative total of influenza isolates confirmed (sentinel and laboratory-based surveillance) for May 2006. A total of 15 isolates were identified, eight as influenza A (yet to be sub-typed), five as A/New York/55/2004 (H3N2) – like, one as A/California/7/2004 (H3N2)-like, and one as influenza B/Shanghai/361/2002-like viruses.

Figure 2

*Cumulative laboratory-confirmed isolates by health district, May 2006*

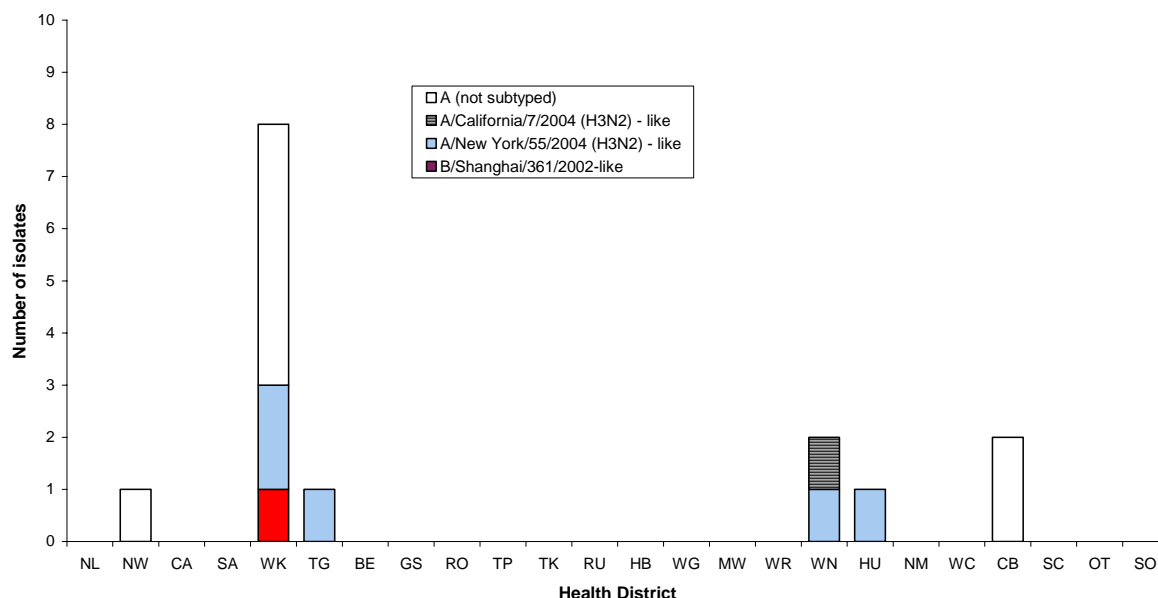


Figure 3 shows the national weekly consultation rates to the end of week 21, May 2006 and rates in 2005 and 2004.

**Figure 3**

*Weekly consultation rates for influenza-like illness in New Zealand, 2004, 2005 and 2006*

