

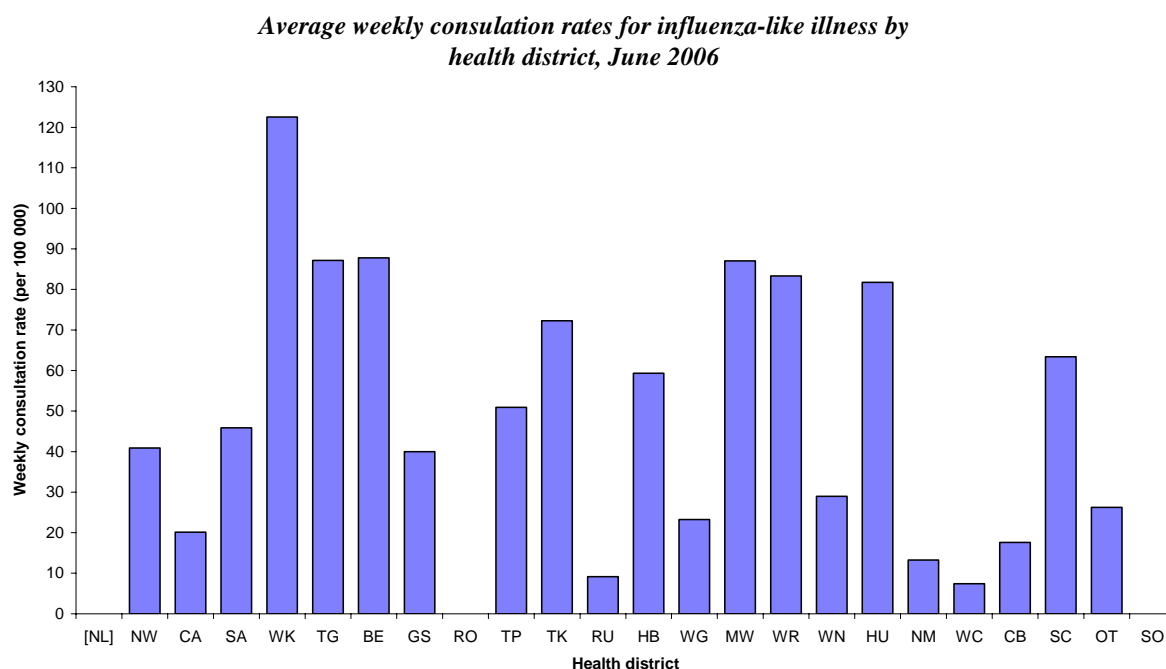
INFLUENZA SURVEILLANCE

SUMMARY - JUNE 2006

During June (weeks 22 – 26), 788 consultations for influenza-like illness were reported from 83 general practices (on average) in 23 out of 24 health districts. The average weekly consultation rate for June was 43.5 per 100 000 patient population.

Figure 1 compares the average weekly consultation rates for influenza-like illness for each health district during June. Waikato had the highest consultation rate (122.6 per 100 000), followed by Eastern Bay of Plenty (87.8 per 100 000).

Figure 1



[] Health district not participating

A total of 211 swabs were sent for testing during June from sentinel surveillance. Two hundred and twenty-eight influenza swabs were received by the regional virology laboratories. Of these, 63 influenza viruses were isolated, 40 as A/New York/55/2004 (H3N2) - like, 21 as influenza A (yet to be sub-typed), one as A/New Caledonia/20/19999 (H1N1)-like, and one as B/Malaysia/2506/2004-like. The distribution by health district is shown in Table 1.

Table 1

	NW	CA	SA	WK	TG	GS	TK	WG	WN	HU	NM	CB	OT	Total
A	1	4	2	6	0	0	0	0	0	0	0	6	2	21
A/New Caledonia/20/99 (H1N1) - like	0	0	0	0	0	0	0	0	0	0	0	1	0	1
A/New York/55/2004 (H3N2) - like	4	0	2	13	6	1	1	2	6	3	1	1	0	40
B/Malaysia/2506/2004-like	0	0	0	0	0	0	0	0	0	0	1	0	0	1
Total	5	4	4	19	6	1	1	2	6	3	2	8	2	63

In addition, 62 influenza viruses were reported from the laboratory-based (non-sentinel) surveillance in June, 30 as influenza A (yet to be sub-typed), and 32 as A/New York/55/2004 (H3N2) – like. The distribution by health district is shown in Table 2.

Table 2

	NW	CA	SA	WK	TG	GS	HB	MW	CB	Total
A	2	4	1	13	1	2	3	0	4	30
A/New York/55/2004 (H3N2) - like	2	2	2	23	0	0	0	1	2	32
Total	4	6	3	36	1	2	3	1	6	62

Figure 2 shows the cumulative total of influenza isolates confirmed (sentinel and laboratory-based surveillance) for June 2006. A total of 125 isolates were identified, 72 as A/New York/55/2004 (H3N2) – like, 51 as influenza A (yet to be sub-typed), one as A/California/7/2004 (H3N2)-like, and one as influenza B/Malaysia/2506/2004-like viruses.

Figure 2

Cumulative laboratory-confirmed isolates by health district, June 2006

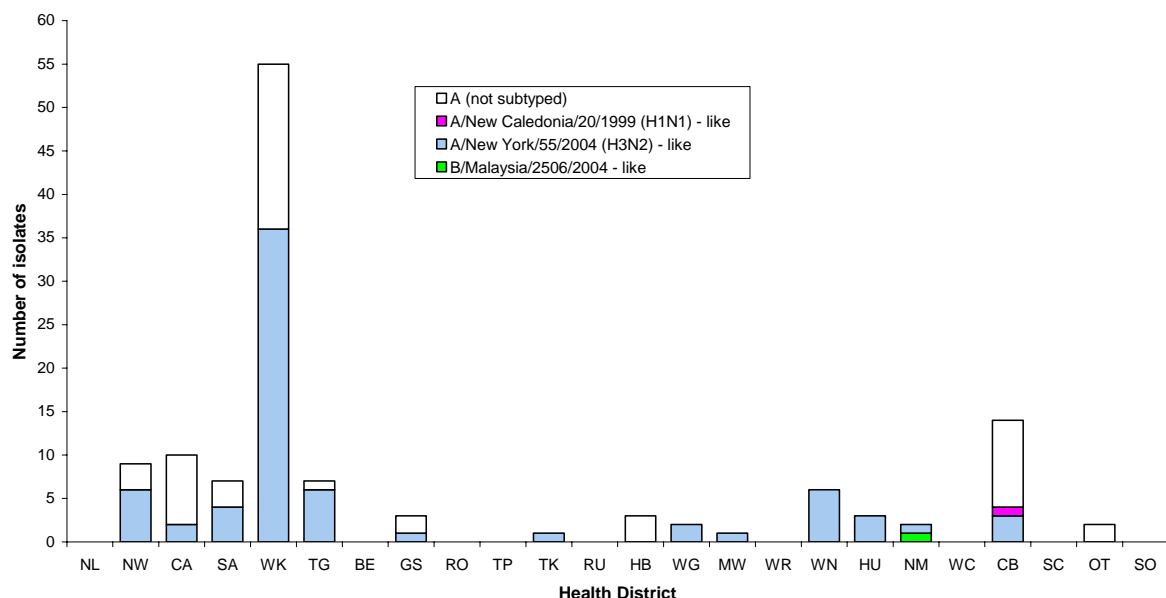


Figure 3 shows the national weekly consultation rates to the end of week 26, June 2006 and rates in 2005 and 2004.

Figure 3

Weekly consultation rates for influenza-like illness in New Zealand, 2004, 2005 and 2006

