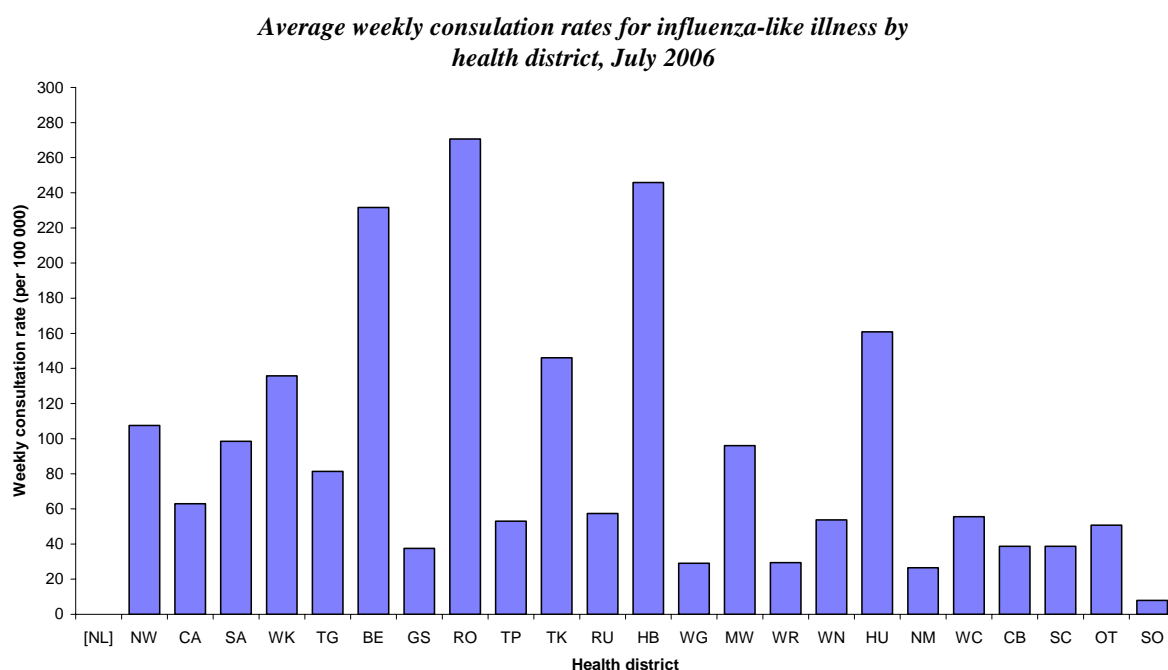


INFLUENZA SURVEILLANCE SUMMARY - JULY 2006

During July (weeks 27 – 30), 1154 consultations for influenza-like illness were reported from 81 general practices (on average) in 23 out of 24 health districts. The average weekly consultation rate for July was 81.8 per 100 000 patient population.

Figure 1 compares the average weekly consultation rates for influenza-like illness for each health district during July. Rotorua had the highest consultation rate (270.7 per 100 000), followed by Hawke's Bay (245.8 per 100 000).

Figure 1



[] Health district not participating

A total of 228 swabs were sent for testing during July from sentinel surveillance. Two hundred and eighty-eight influenza swabs were received by the regional virology laboratories. Of these, 119 influenza viruses were isolated, 89 as A/New York/55/2004 (H3N2) – like and 30 as influenza A (yet to be sub-typed). The distribution by health district is shown in Table 1.

Table 1

	NW	CA	SA	WK	TG	BE	GS	RO	TP	TK	HB	WG	WR	WN	HU	NM	WC	CB	OT	Total
A	1	2	4	2	0	0	0	0	0	0	0	0	0	0	0	0	1	14	6	30
A/New York/55/2004 (H3N2) - like	10	20	4	11	2	4	2	2	3	2	8	3	1	5	1	3	0	5	3	89
Total	11	22	8	13	2	4	2	2	3	2	8	3	1	5	1	3	1	19	9	119

In addition, 192 influenza viruses were reported from the laboratory-based (non-sentinel) surveillance in July, 113 as influenza A (yet to be sub-typed), 78 as A/New York/55/2004 (H3N2) – like, and one as A/New Caledonia/20/1999 (H1N1) - like. The distribution by health district is shown in Table 2.

Table 2

	NW	CA	SA	WK	BE	TK	HB	MW	WN	NM	CB	OT	Total
A	1	3	2	7	0	0	1	1	1	1	93	3	113
A/New Caledonia/20/1999 (H1N1) - like	0	0	1	0	0	0	0	0	0	0	0	0	1
A/New York/55/2004 (H3N2) - like	9	18	21	17	1	1	0	0	0	0	11	0	78
Total	10	21	24	24	1	1	1	1	1	1	104	3	192

Figure 2 shows the cumulative total of influenza isolates confirmed (sentinel and laboratory-based surveillance) for July 2006. A total of 311 isolates were identified, 167 as A/New York/55/2004 (H3N2) – like, 143 as influenza A (yet to be sub-typed), and one as A/New Caledonia/20/1999 (H1N1) - like viruses.

Figure 2

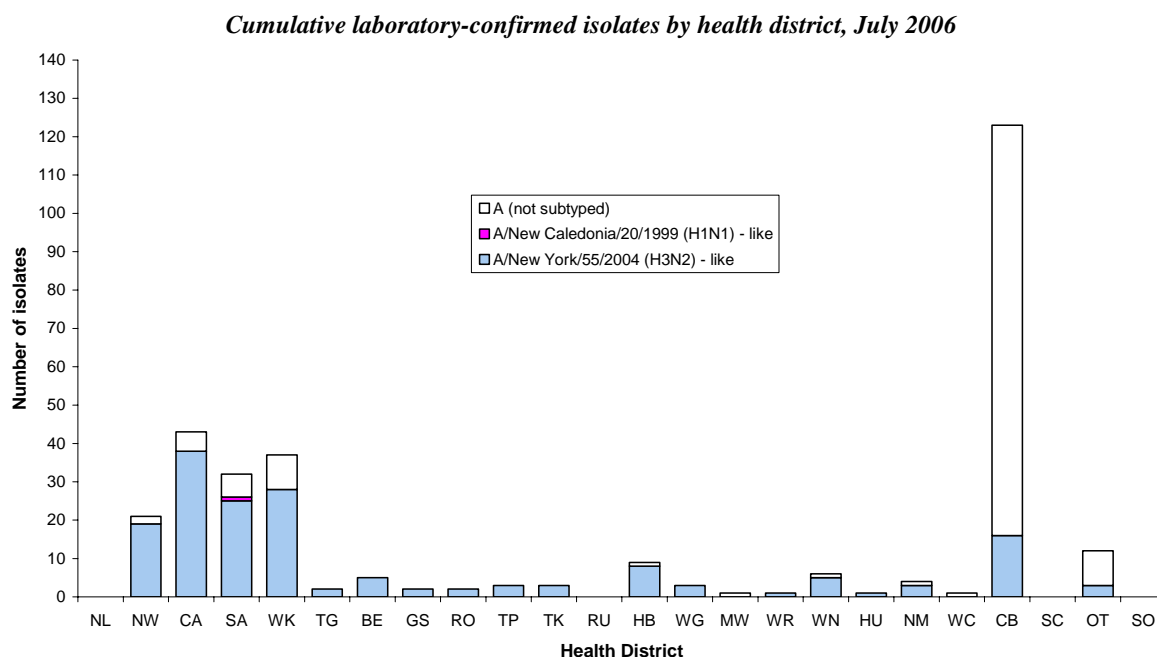


Figure 3 shows the national weekly consultation rates to the end of week 30, July 2006 and rates in 2005 and 2004.

Figure 3

Weekly consultation rates for influenza-like illness in New Zealand, 2004, 2005 and 2006

