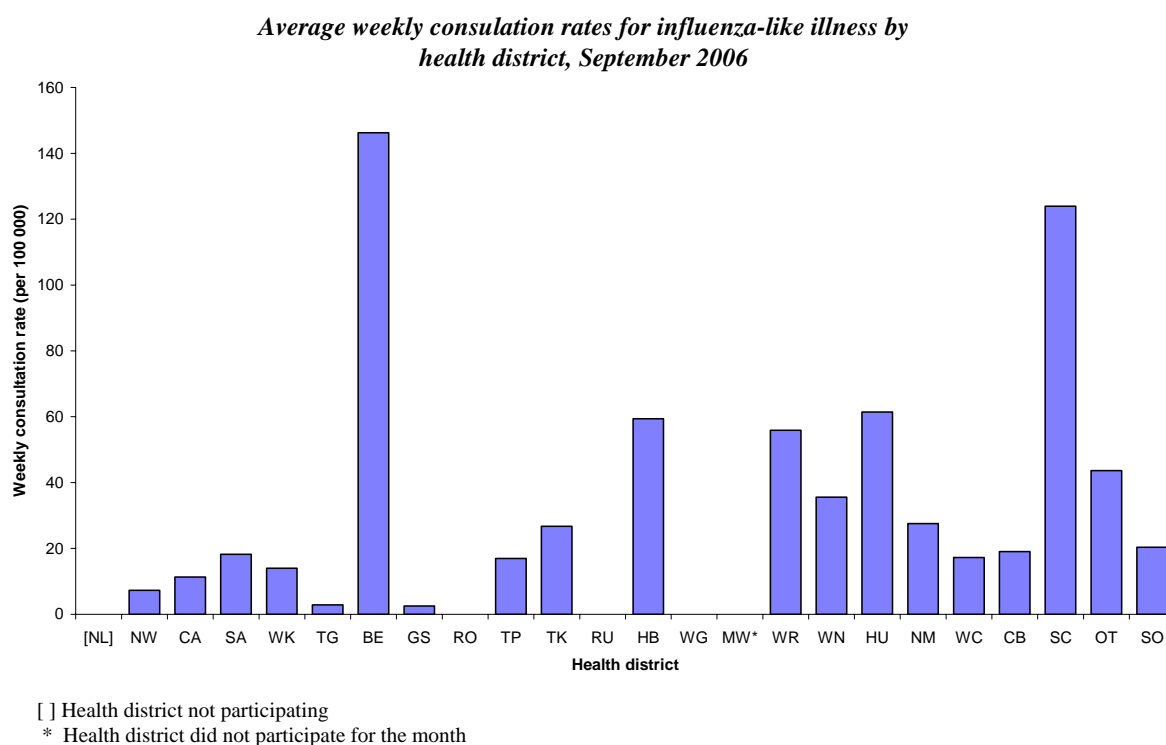


INFLUENZA SURVEILLANCE SUMMARY - SEPTEMBER 2006

During September (weeks 35 – 39), 469 consultations for influenza-like illness were reported from 78 general practices (on average) in 22 out of 24 health districts. The average weekly consultation rate for September was 28.9 per 100 000 patient population.

Figure 1 compares the average weekly consultation rates for influenza-like illness for each health district during September. Eastern Bay of Plenty had the highest consultation rate (146.3 per 100 000), followed by South Canterbury (123.9 per 100 000).

Figure 1



A total of 91 swabs were sent for testing during September from sentinel surveillance. Ninety-nine influenza swabs were received by the regional virology laboratories. Of these, 14 influenza viruses were isolated, eight as A/New Caledonia/20/1999 (H1N1) – like, four as influenza A (yet to be sub-typed), and two as A/New York/55/2004 (H3N2) – like. The distribution by health district is shown in Table 1.

Table 1

	TP	WR	NM	CB	OT	SO	Total
A	0	0	0	4	0	0	4
A/New Caledonia/20/1999 (H1N1) - like	0	1	0	0	4	3	8
A/New York/55/2004 (H3N2) - like	1	0	1	0	0	0	2
Total	1	1	1	4	4	3	14

In addition, 24 influenza viruses were reported from the laboratory-based (non-sentinel) surveillance in September, 19 as influenza A (yet to be sub-typed), four as A/New Caledonia/20/1999 (H1N1) – like, and one as influenza B (not typed). The distribution by health district is shown in Table 2.

Table 2

	NW	HB	CB	OT	SO	Total
A	1	1	15	1	1	19
A/New Caledonia/20/1999 (H1N1) - like	0	0	4	0	0	4
B	0	0	1	0	0	1
Total	1	1	20	1	1	24

Figure 2 shows the cumulative total of influenza isolates confirmed (sentinel and laboratory-based surveillance) for September 2006. A total of 38 isolates were identified, 23 as influenza A (yet to be sub-typed), 12 as A/New Caledonia/20/1999 (H1N1) – like, two as A/New York/55/2004 (H3N2) – like, and one as influenza B (not typed).

Figure 2

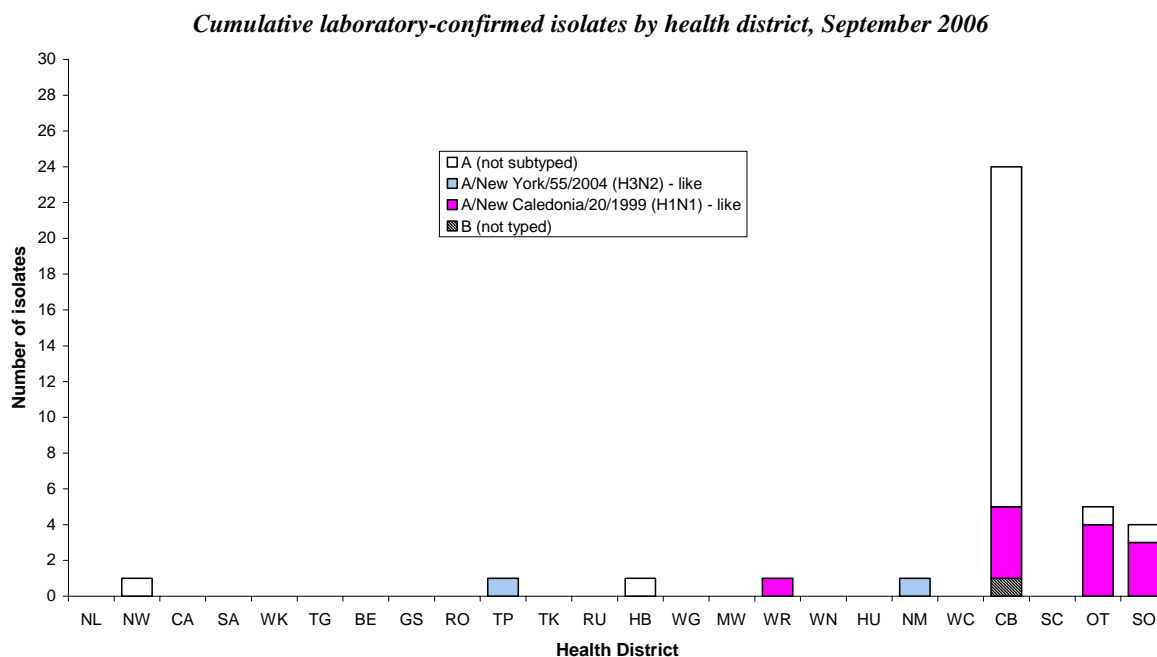


Figure 3 shows the national weekly consultation rates to the end of week 39, September 2006 and rates in 2005 and 2004.

Figure 3

Weekly consultation rates for influenza-like illness in New Zealand, 2004, 2005 and 2006

