

# INFLUENZA SURVEILLANCE

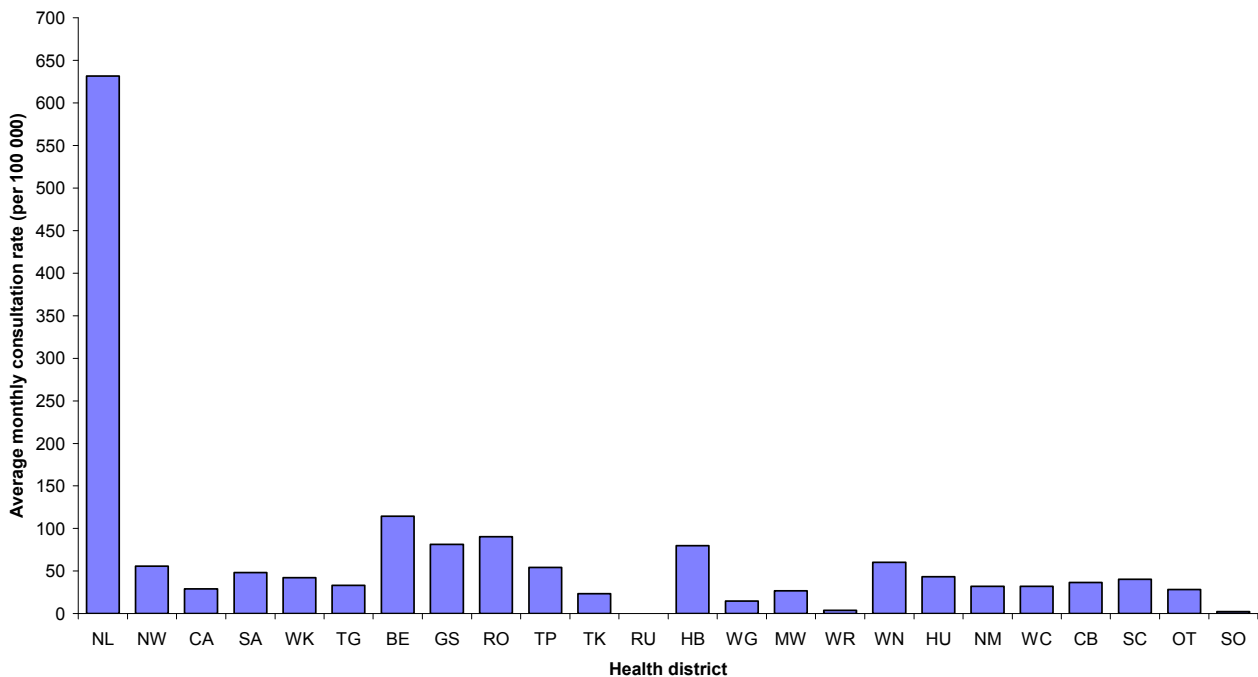
## SUMMARY - JUNE 2008

During June (weeks 23 – 26), 544 consultations for influenza-like illness were reported from 80 general practices (on average) in all of the 24 health districts. The average weekly consultation rate for June was 40.1 per 100 000 patient population.

Figure 1 compares the average weekly consultation rates for influenza-like illness for each health district during June. Northland had the highest consultation rate (631.7 per 100 000), followed by Eastern Bay of Plenty (114.5 per 100 000).

**Figure 1**

*Figure 1: Average monthly consultation rates for influenza-like illness by health district, June 2008*



A total of 168 swabs were sent for testing during June from sentinel surveillance. One hundred and ninety-five influenza swabs were received by the regional virology laboratories. Of these, 82 influenza viruses were identified, 33 influenza A (yet to be sub-typed), 24 A/Brisbane/10/2007 (H3N2) – like, 10 influenza A H3N2 (not antigenically sub-typed), nine B/Florida/4/2006 – like, and six influenza B (not antigenically typed). The distribution by health district is shown in Table 1.

**Table 1**

Antigenic Strain	NW	CA	SA	WK	TG	BE	GS	RO	TP	TK	RU	HB	WG	MW	WR	WN	HU	NM	CB	OT	Total
A (yet to be sub-typed)	2	14	3	2	0	0	0	0	0	0	1	0	0	1	2	1	0	0	7	0	33
A H3N2 (not antigenically sub-typed)	0	0	0	0	1	1	0	0	1	1	2	0	1	0	2	0	0	1	0	0	10
A/Brisbane/10/2007 (H3N2) - like	0	0	0	9	2	2	0	1	2	0	1	1	0	0	1	4	1	0	0	0	24
B (not antigenically typed)	1	2	0	0	0	0	0	0	0	0	0	0	0	0	0	0	0	0	3	0	6
B/Florida/4/2006 - like	0	0	0	3	0	1	1	0	0	0	0	0	0	0	1	0	1	0	0	2	9
<b>Total</b>	<b>3</b>	<b>16</b>	<b>3</b>	<b>14</b>	<b>3</b>	<b>4</b>	<b>1</b>	<b>1</b>	<b>3</b>	<b>1</b>	<b>4</b>	<b>1</b>	<b>1</b>	<b>1</b>	<b>6</b>	<b>5</b>	<b>2</b>	<b>1</b>	<b>10</b>	<b>2</b>	<b>82</b>

In addition, 59 influenza viruses were reported from the laboratory-based (non-sentinel) surveillance, 37 influenza A (yet to be sub-typed), 11 influenza B (not antigenically typed), 10 A/Brisbane/10/2007 (H3N2) – like, and one B/Florida/4/2006 – like. The distribution by health district is shown in Table 2.

**Table 2.**

Antigenic Strain	NW	CA	SA	WK	HB	CB	Total
A (yet to be sub-typed)	6	5	14	4	6	2	37
A/Brisbane/10/2007 (H3N2) - like	0	0	0	10	0	0	10
B (not antigenically typed)	1	0	7	0	1	2	11
B/Florida/4/2006 - like	0	0	0	1	0	0	1
<b>Total</b>	<b>7</b>	<b>5</b>	<b>21</b>	<b>15</b>	<b>7</b>	<b>4</b>	<b>59</b>

Figure 2 shows the cumulative total of influenza isolates confirmed (sentinel and laboratory-based surveillance) for June 2008. A total of 141 isolates were identified, 70 influenza A (yet to be sub-typed), 34 A/Brisbane/10/2007 (H3N2) – like, 10 influenza A H3N2 (not antigenically sub-typed), 17 influenza B (not antigenically typed), and 10 B/Florida/4/2006 – like.

**Figure 2**

*Figure 2: Cumulative laboratory-confirmed isolates by health district, June 2008*

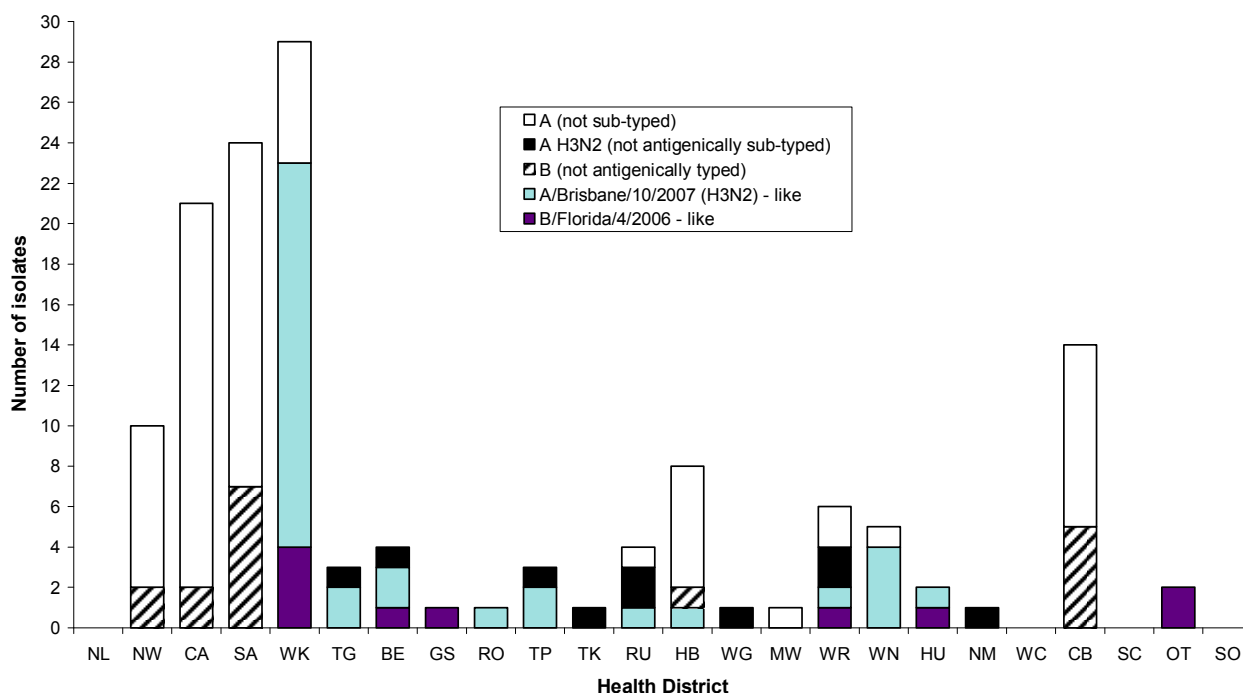
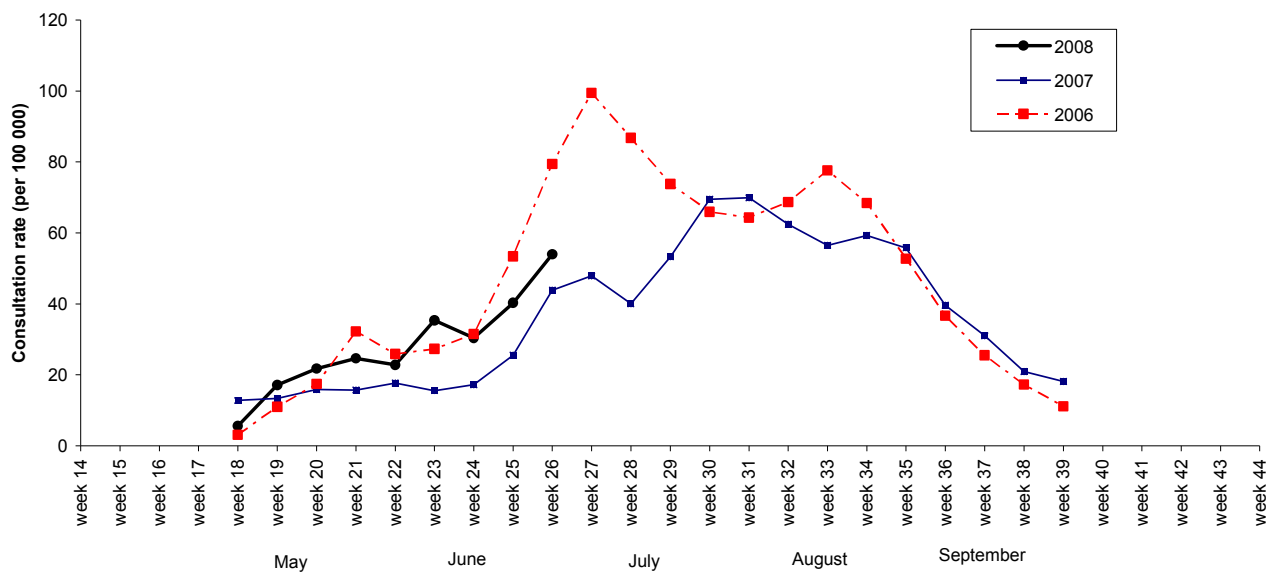


Figure 3 shows the national weekly consultation rates to the end of week 26, June 2008 and rates in 2007 and 2006.

**Figure 3**

*Figure 3: Weekly consultation rates for influenza-like illness in New Zealand, 2006, 2007 and 2008*



Compiled by:

Liza Lopez  
Population and Environmental Health  
ESR Kenepuru Science Centre  
PO Box 50 348  
PORIRUA

phone: 04 914-0647  
fax: 04 914-0770  
website: [www.esr.cri.nz](http://www.esr.cri.nz)  
email: [liza.lopez@esr.cri.nz](mailto:liza.lopez@esr.cri.nz)