

INFLUENZA SURVEILLANCE

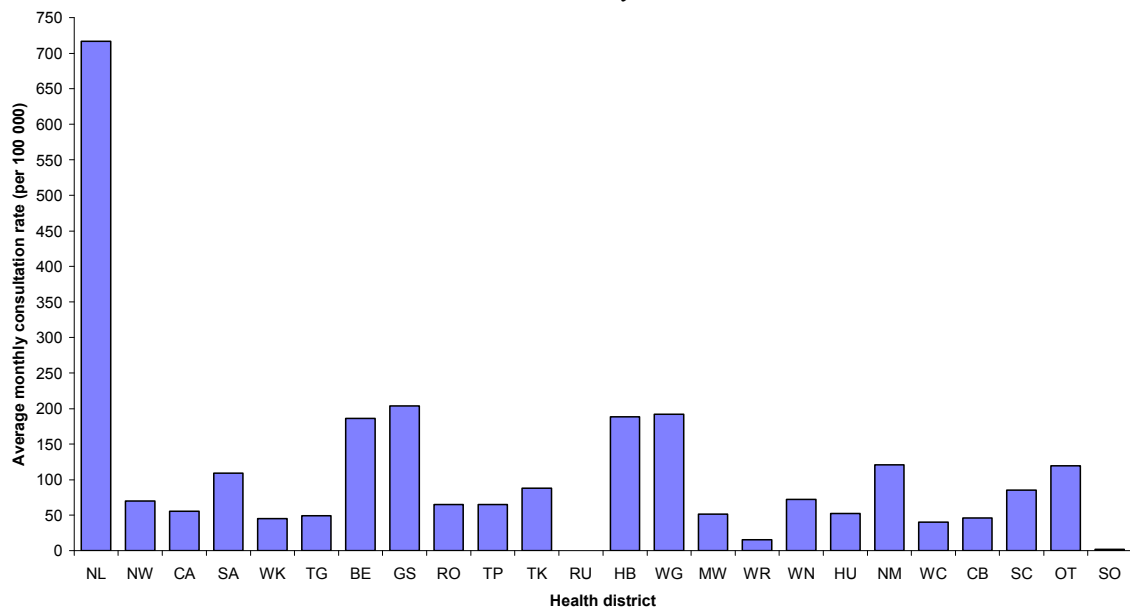
SUMMARY - JULY 2008

During July (weeks 27 – 30), 1064 consultations for influenza-like illness were reported from 78 general practices (on average) in all of the 24 health districts. The average weekly consultation rate for July was 79.2 per 100 000 patient population.

Figure 1 compares the average weekly consultation rates for influenza-like illness for each health district during July. Northland had the highest consultation rate (716.7 per 100 000), followed by Gisborne (204.0 per 100 000).

Figure 1

Figure 1: Average monthly consultation rates for influenza-like illness by health district, July 2008



A total of 205 swabs were sent for testing during July from sentinel surveillance. One hundred and ninety-five influenza swabs were received by the regional virology laboratories. Of these, 133 influenza viruses were identified, 43 influenza B (not antigenically typed), 31 influenza A H3N2 (not antigenically sub-typed), 25 influenza A (yet to be sub-typed), 17 A/Brisbane/10/2007 (H3N2) – like, 10 B/Florida/4/2006 – like, and seven B/Malaysia/2506/2004 – like. The distribution by health district is shown in Table 1.

Table 1

Antigenic Strain	NL	NW	CA	SA	WK	TG	BE	GS	RO	TP	TK	HB	WG	MW	WN	NM	CB	SC	OT	Total
A (yet to be sub-typed)	0	4	7	0	4	0	0	0	0	0	0	0	0	0	2	1	7	0	0	25
A H3N2 (not antigenically sub-typed)	1	0	0	0	0	1	0	6	0	2	2	1	3	3	7	0	0	3	2	31
A/Brisbane/10/2007 (H3N2) - like	2	0	0	0	3	1	0	2	0	0	0	2	1	0	3	2	0	0	1	17
B (not antigenically typed)	2	8	11	2	3	2	0	0	0	0	0	0	0	0	0	1	5	1	8	43
B/Florida/4/2006 - like	0	0	0	0	0	1	1	0	1	0	0	0	0	0	0	4	1	1	1	10
B/Malaysia/2506/2004 - like	0	0	0	0	1	0	0	0	1	0	0	0	1	0	1	1	0	0	2	7
Total	5	12	18	2	11	5	1	8	2	2	2	3	5	3	13	9	13	5	14	133

In addition, 162 influenza viruses were reported from the laboratory-based (non-sentinel) surveillance, 78 influenza A (yet to be sub-typed), 80 influenza B (not antigenically typed), and four A/Brisbane/10/2007 (H3N2) – like. The distribution by health district is shown in Table 2.

Table 2.

Antigenic Strain	NL	NW	CA	SA	WK	HB	WN	NM	CB	SC	Total
A (yet to be sub-typed)	2	2	20	25	4	13	1	0	10	1	78
A/Brisbane/10/2007 (H3N2) - like	0	0	0	1	3	0	0	0	0	0	4
B (not antigenically typed)	1	3	23	30	13	1	1	1	7	0	80
Total	3	5	43	56	20	14	2	1	17	1	162

Figure 2 shows the cumulative total of influenza isolates confirmed (sentinel and laboratory-based surveillance) for July 2008. A total of 295 isolates were identified, 103 influenza A (yet to be sub-typed), 21 A/Brisbane/10/2007 (H3N2) – like, 31 influenza A H3N2 (not antigenically sub-typed), 123 influenza B (not antigenically typed), 10 B/Florida/4/2006 – like, and seven B/Malaysia/2506/2004 – like.

Figure 2

Figure 2: Cumulative laboratory-confirmed isolates by health district, July 2008

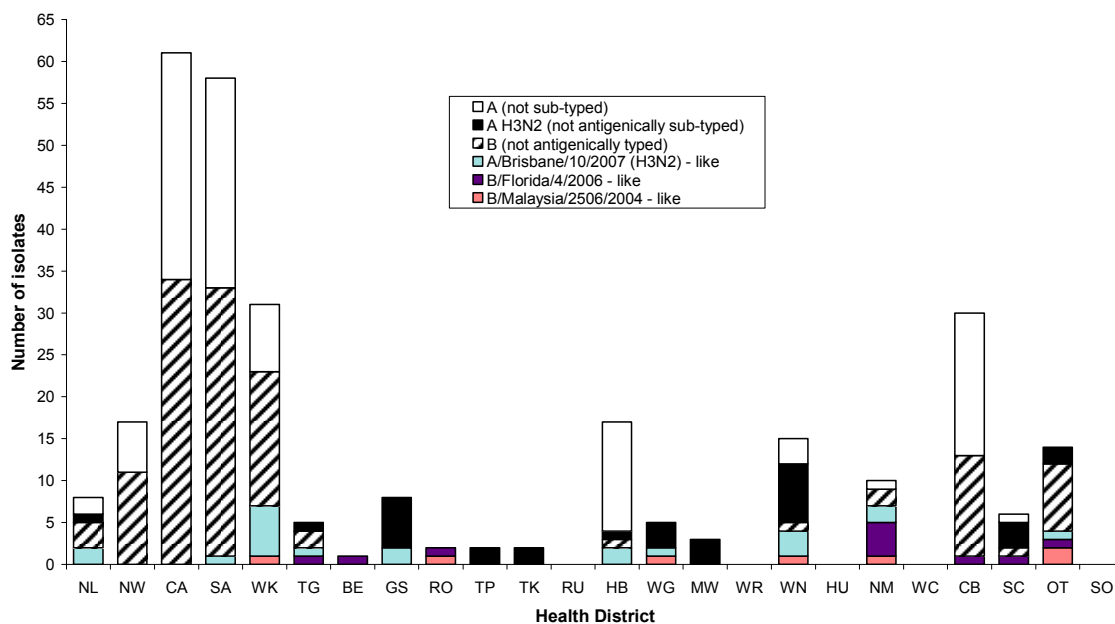
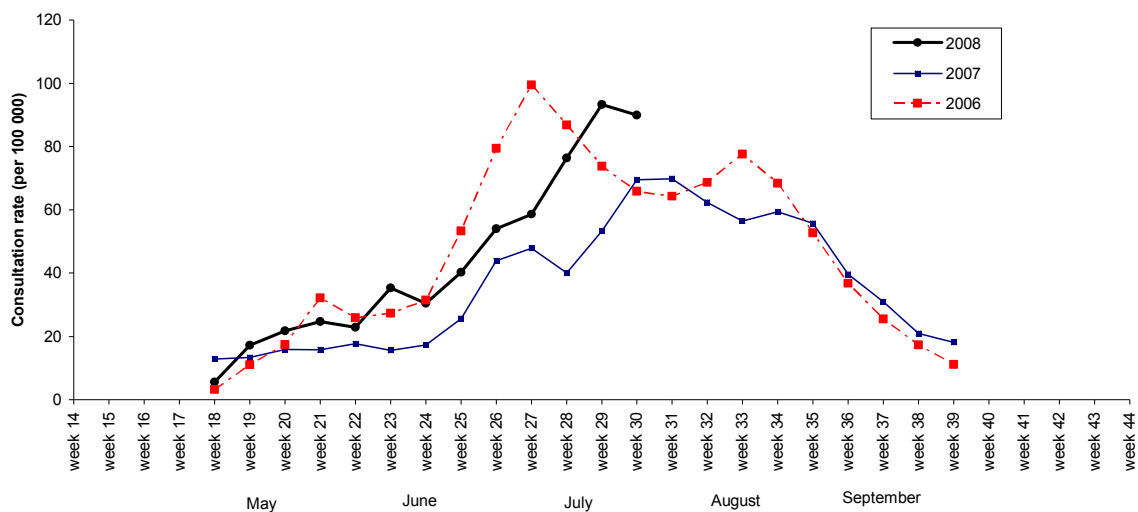


Figure 3 shows the national weekly consultation rates to the end of week 30, July 2008 and rates in 2007 and 2006.

Figure 3

Figure 3: Weekly consultation rates for influenza-like illness in New Zealand, 2006, 2007 and 2008



Compiled by: Liza Lopez
Population and Environmental Health
ESR Kenepuru Science Centre
PO Box 50 348
PORIRUA

phone: 04 914-0647
fax: 04 914-0770
website: www.esr.cri.nz
email: liza.lopez@esr.cri.nz