

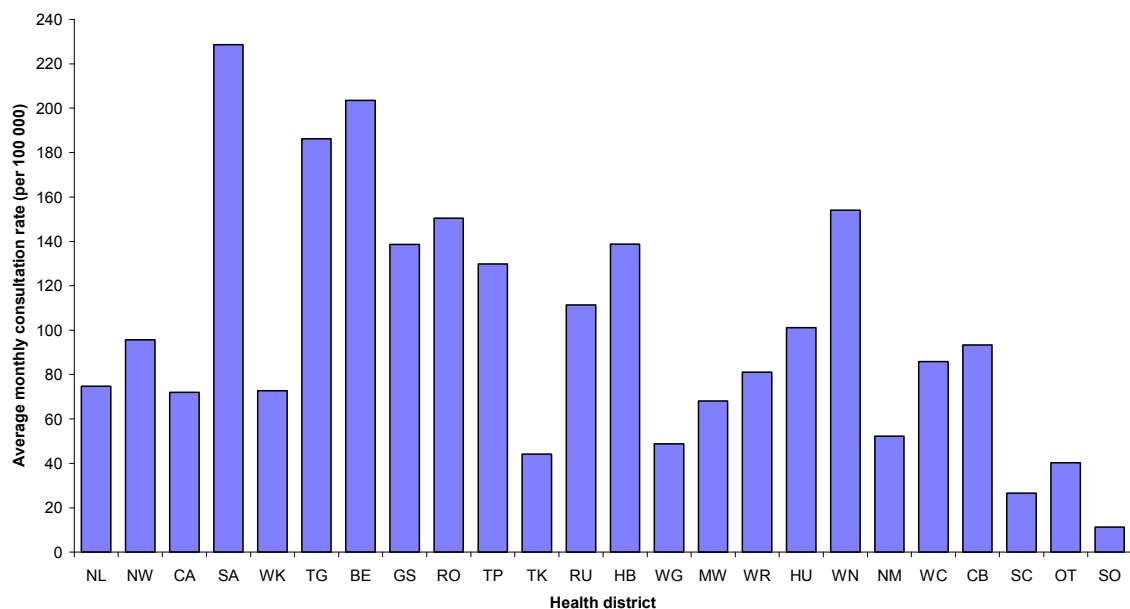
INFLUENZA SURVEILLANCE

SUMMARY - JUNE 2009

During June (weeks 23 – 26), 1262 consultations for influenza-like illness were reported from 87 general practices (on average) in all 24 health districts. The average weekly consultation rate for June was 81.4 per 100 000 patient population.

Figure 1 compares the average weekly consultation rates for influenza-like illness for each health district during June. South Auckland had the highest consultation rate (228.6 per 100 000, 16 cases), followed by Eastern Bay of Plenty (203.5 per 100 000, 16 cases) and Tauranga (186.3 per 100 000, 26 cases).

Figure 1: Average monthly consultation rates for influenza-like illness by health district, June 2009



A total of 432 swabs were sent for testing during June from sentinel surveillance. Five hundred and ninety-five influenza swabs were received by the regional virology laboratories. Of these, 150 influenza viruses were identified: novel influenza AH1N1 09 virus (73), seasonal influenza A virus (38), seasonal influenza AH1N1 virus (20), A/Brisbane/59/2007 (H1N1)-like virus (13), seasonal influenza AH3N2 virus (4), and influenza A (not sub-typed) (2). The distribution by health district is shown in Table 1.

Table 1: Influenza viruses from sentinel surveillance for June by Health District

Antigenic Strain	NL	CA	WK	TG	BE	GS	RO	TP	HB	WG	MW	WR	WN	HU	NM	WC	CB	SC	OT	Total
A (not sub-typed)	0	2	0	0	0	0	0	0	0	0	0	0	0	0	0	0	0	0	0	2
A/Brisbane/59/2007 (H1N1) - like virus	1	0	1	0	1	2	1	2	3	0	2	0	0	0	0	0	0	0	0	13
Novel AH1N1 09 virus	12	0	1	3	2	1	0	1	5	1	4	4	11	4	3	2	12	0	7	73
Seasonal A H1N1 virus	1	0	1	1	0	2	1	0	4	0	5	1	0	1	2	0	0	0	1	20
Seasonal A H3N2 virus	2	0	0	0	0	0	0	0	1	0	0	0	0	1	0	0	0	0	0	4
Seasonal A virus	6	0	1	1	1	1	3	1	8	4	5	5	0	1	0	0	0	1	0	38
Total	22	2	4	5	4	6	5	4	21	5	16	10	11	7	5	2	12	1	8	150

In addition, 1522 influenza viruses were reported from the laboratory-based (non-sentinel) surveillance: novel influenza AH1N1 09 virus (615), influenza A (not sub-typed) (390), seasonal influenza AH1N1 virus (239), seasonal influenza A virus (205), A/Brisbane/59/2007 (H1N1)-like virus (48), seasonal influenza AH3N2 virus (24), and A/Brisbane/10/2007 (H3N2)-like virus (1).

Table 2: Influenza viruses from non-sentinel surveillance for June by Health District

Antigenic Strain	NL	CA	WK	TG	BE	RO	TP	TK	HB	MW	WR	WN	HU	NM	WC	CB	SC	OT	Total
A (not sub-typed)	1	59	40	0	0	0	0	2	33	25	0	3	0	13	2	201	7	4	390
A/Brisbane/10/2007 (H3N2) - like	0	0	0	0	0	0	0	0	0	0	0	0	0	0	0	1	0	0	1
A/Brisbane/59/2007 (H1N1) - like virus	0	14	11	10	1	2	0	0	0	0	0	3	0	0	0	7	0	0	48
Novel AH1N1 09 virus	0	190	60	15	1	10	0	3	23	4	0	210	43	3	1	47	1	4	615
Seasonal A H1N1 virus	0	175	29	13	0	6	1	0	9	0	1	2	0	0	0	3	0	0	239
Seasonal A H3N2 virus	0	20	1	2	0	1	0	0	0	0	0	0	0	0	0	0	0	0	24
Seasonal A virus	0	101	65	26	0	6	0	0	0	0	0	5	1	0	0	1	0	0	205
Total	1	559	206	66	2	25	1	5	65	29	1	223	44	16	3	260	8	8	1522

Figure 2 shows the cumulative total of influenza viruses confirmed (sentinel and laboratory-based surveillance) for June 2009. A total of 1672¹ viruses were identified: novel influenza AH1N1 09 virus (688), influenza A (not sub-typed) (392), seasonal influenza AH1N1 virus (259), seasonal influenza A virus (243), A/Brisbane/59/2007 (H1N1)-like virus (61), seasonal influenza AH3N2 virus (28), and A/Brisbane/10/2007 (H3N2)-like (1).

¹ Data based on date specimen taken.

Figure 2: Cumulative laboratory-confirmed viruses by health district, June 2009

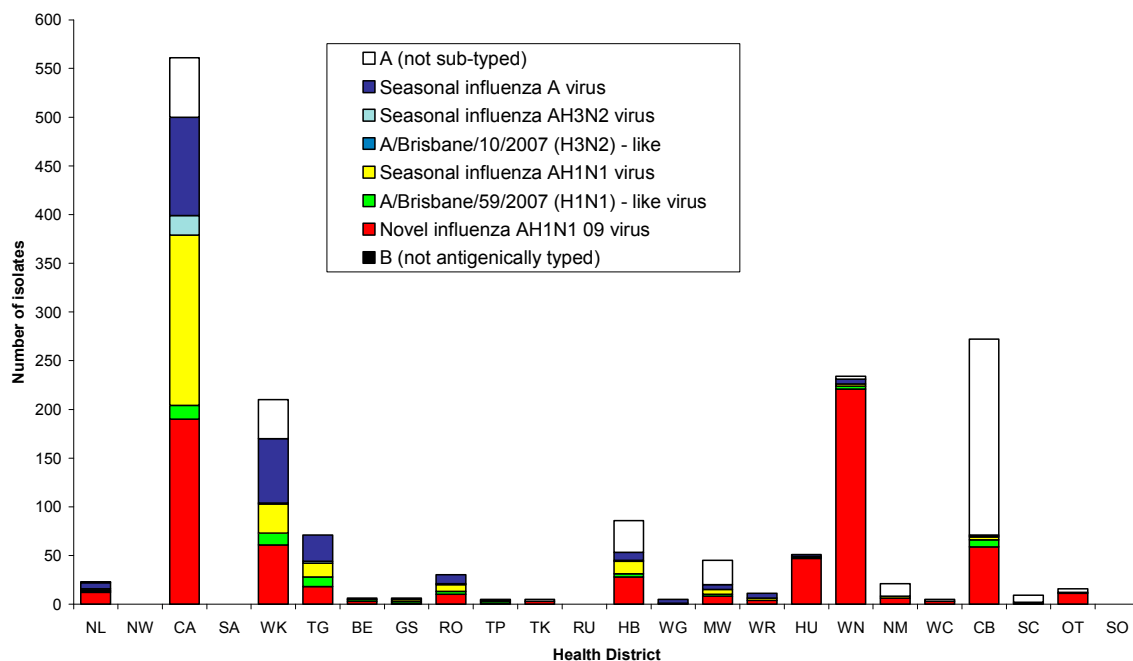
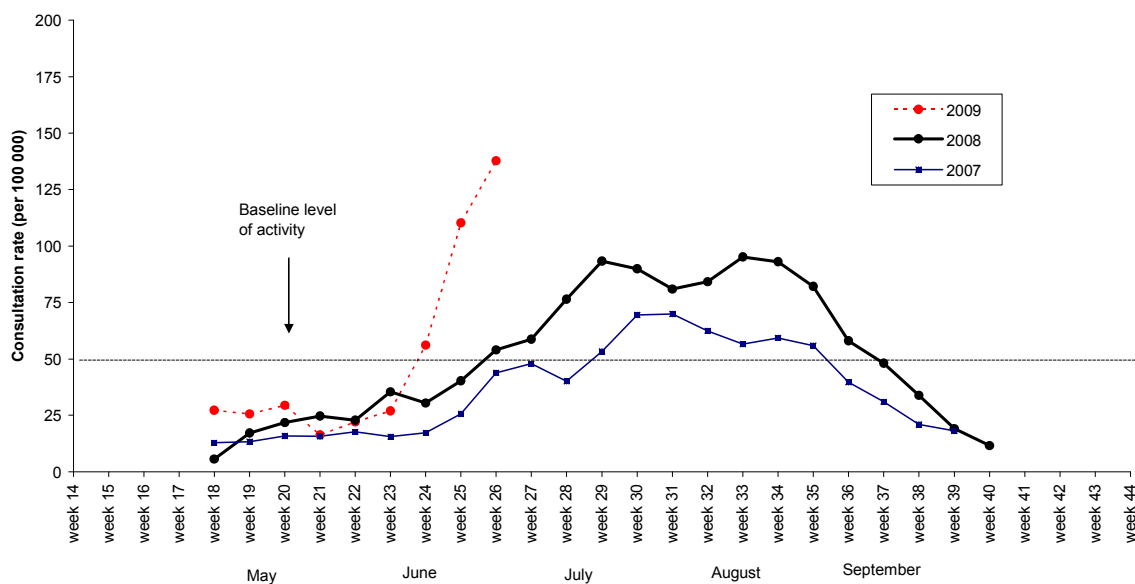


Figure 3 shows the national weekly consultation rates to the end of week 26, June 2009 and rates in 2008 and 2007.

Figure 3: Weekly consultation rates for influenza-like illness in New Zealand, 2007, 2008 and 2009



Compiled by:

Liza Lopez

Population and Environmental Health

ESR Kenepuru Science Centre

PO Box 50 348, PORIRUA

Tel : 04 914 0647 Fax: 04 978 6690 Email:liza.lopez@esr.cri.nz

Dr. Sue Huang

WHO National Influenza Centre

ESR Wallaceville Science Centre

PO Box 40158, Upper Hutt