

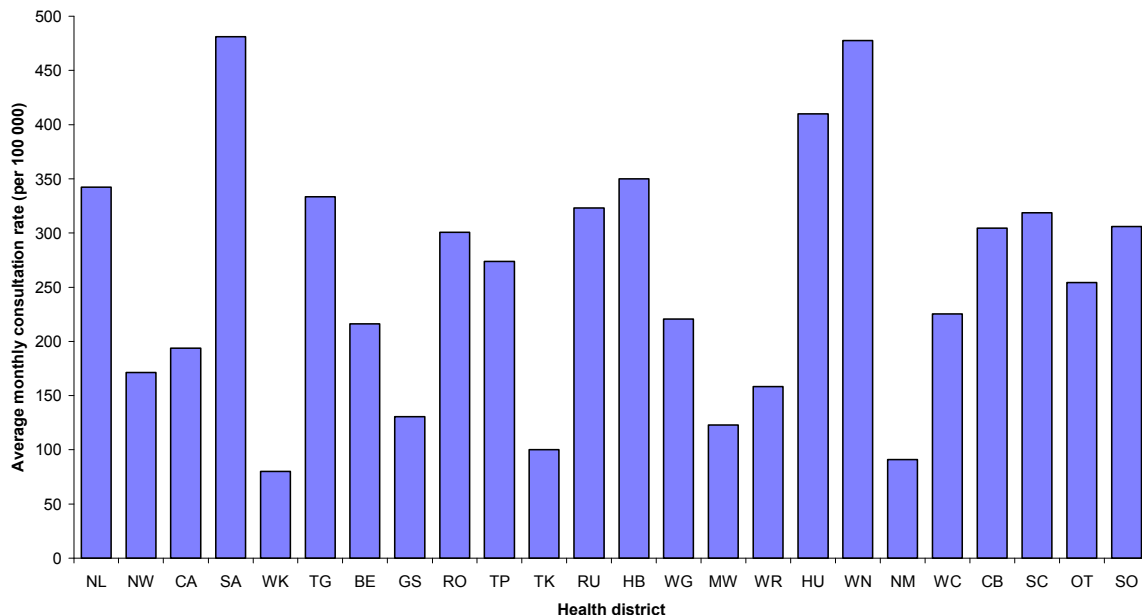
INFLUENZA SURVEILLANCE

SUMMARY - JULY 2009

During July (weeks 27 – 30), 3825 consultations for influenza-like illness were reported from 85 general practices (on average) in all 24 health districts. The average weekly consultation rate for July was 252.1 per 100 000 patient population.

Figure 1 compares the average weekly consultation rates for influenza-like illness for each health district during July. South Auckland had the highest consultation rate (481.3 per 100 000, 51 cases), followed by Wellington (477.6 per 100 000, 446 cases) and Hutt (409.9 per 100 000, 503 cases).

Figure 1: Average monthly consultation rates for influenza-like illness by health district, July 2009



Six hundred and thirty swabs were sent from the sentinel surveillance system in the past week. A total of 950 swabs were received by the virology laboratories from which 336 influenza viruses were identified: novel influenza A H1N1 09 lineage (260), seasonal influenza A (32), seasonal influenza A H1N1 virus (24), influenza A (not sub-typed) (19), and A/Brisbane/59/2007 (H1N1) - like (1). The distribution by health district is shown in Table 1.

Table 1: Influenza viruses from sentinel surveillance for July by Health District

Antigenic Strain	NL	NW	CA	SA	TG	BE	GS	RO	TP	TK	HB	WG	MW	WR	WN	HU	NM	WC	CB	SC	OT	SO	Total
A (not sub-typed)	1	4	6	3	0	0	0	0	1	0	0	0	0	0	0	0	0	1	2	1	0	0	19
A/Brisbane/59/2007 (H1N1) - like	0	0	0	0	0	0	0	0	1	0	0	0	0	0	0	0	0	0	0	0	0	0	1
Novel A (H1N1) 09 lineage	28	0	28	0	1	2	5	2	2	3	4	18	13	25	9	5	8	19	29	18	26	15	260
Seasonal A	1	0	1	0	0	3	1	0	3	0	0	0	3	4	2	2	1	0	0	4	5	2	32
Seasonal A H1N1	5	0	1	0	1	0	0	0	0	1	0	4	0	2	0	0	2	1	2	1	2	2	24
Total	35	4	36	3	2	5	6	2	7	4	4	22	16	31	11	7	11	21	33	24	33	19	336

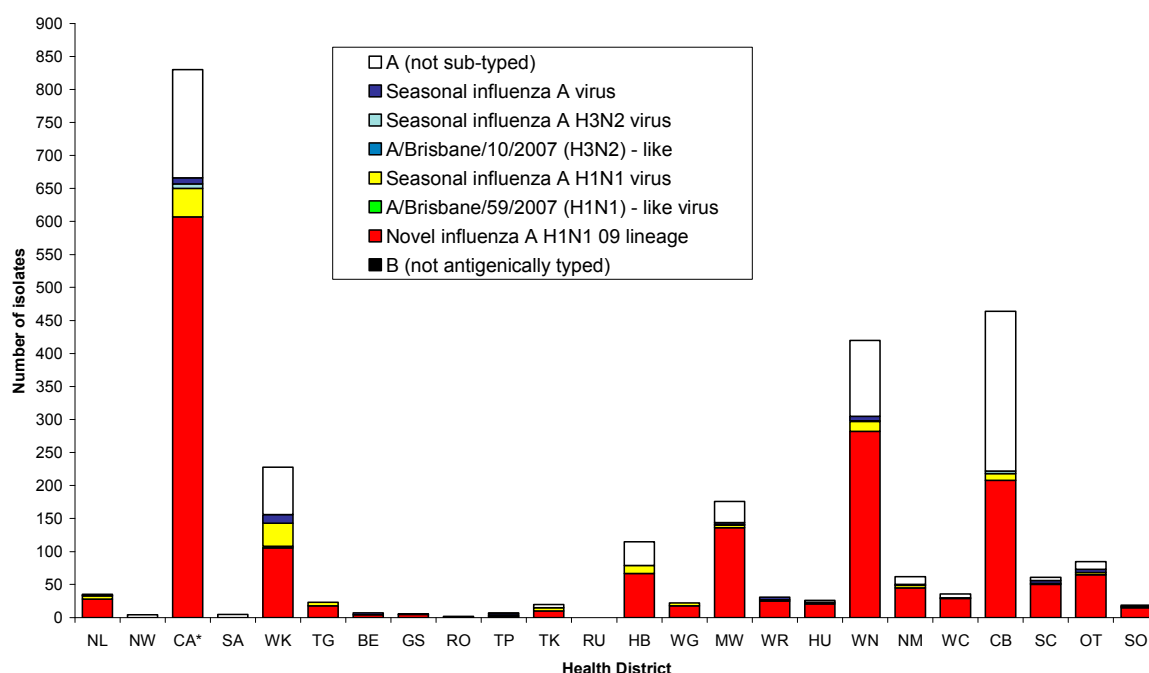
In addition, 2348 influenza viruses were reported from the laboratory-based (non-sentinel) surveillance: novel influenza A H1N1 09 lineage (1483), influenza A (not sub-typed) (696), seasonal influenza A H1N1 virus (128), seasonal influenza A virus (26), seasonal influenza A H3N2 virus (13), and A/Brisbane/59/2007 (H1N1) - like virus (2).

Table 2: Influenza viruses from non-sentinel surveillance for July by Health District

Antigenic Strain	CA	SA	WK	TG	BE	TK	HB	MW	WN	HU	NM	WC	CB	SC	OT	Total
A (not sub-typed)	158	2	72	0	0	5	36	32	115	3	12	5	240	4	12	696
A/Brisbane/59/2007 (H1N1) - like	0	0	2	0	0	0	0	0	0	0	0	0	0	0	0	2
Novel A (H1N1) 09 lineage	579	0	106	17	2	7	63	123	273	16	37	10	179	32	39	1483
Seasonal A	8	0	13	0	0	0	0	0	5	0	0	0	0	0	0	26
Seasonal A H1N1	42	0	35	4	0	4	12	4	15	0	2	0	8	1	1	128
Seasonal A H3N2	7	0	0	0	0	0	0	1	1	0	0	0	4	0	0	13
Total	794	2	228	21	2	16	111	160	409	19	51	15	431	37	52	2348

Figure 2 shows the cumulative total of influenza viruses confirmed (sentinel and laboratory-based surveillance) for July 2009. A total of 2684¹ viruses were identified: novel influenza A H1N1 lineage (1743), influenza A (not sub-typed) (715), seasonal influenza A H1N1 virus (152), seasonal influenza A virus (58), seasonal influenza A H3N2 virus (13), and A/Brisbane/59/2007 (H1N1) - like virus (3).

Figure 2: Cumulative laboratory-confirmed viruses by health district, July 2009

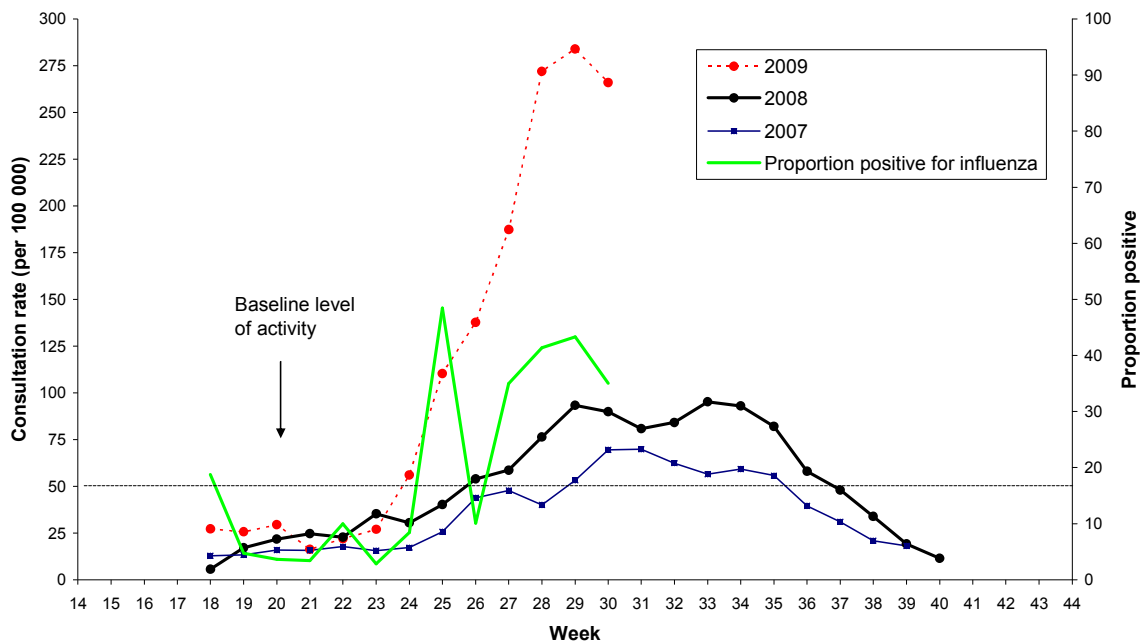


Note: Viruses from Auckland without health district codes have been temporarily assigned to Central Auckland (CA).

¹ Data based on date specimen taken.

Figure 3 shows the national weekly consultation rates to the end of week 30, July 2009 and rates in 2008 and 2007.

Figure 3: Weekly consultation rates for influenza-like illness in New Zealand, 2007, 2008 and 2009



Compiled by:
 Liza Lopez
 Population and Environmental Health
 ESR Kenepuru Science Centre
 PO Box 50 348, PORIRUA
 Tel : 04 914 0647 Fax: 04 978 6690 Email:liza.lopez@esr.cri.nz

Dr. Sue Huang
 WHO National Influenza Centre
 ESR Wallaceville Science Centre
 PO Box 40158, Upper Hutt