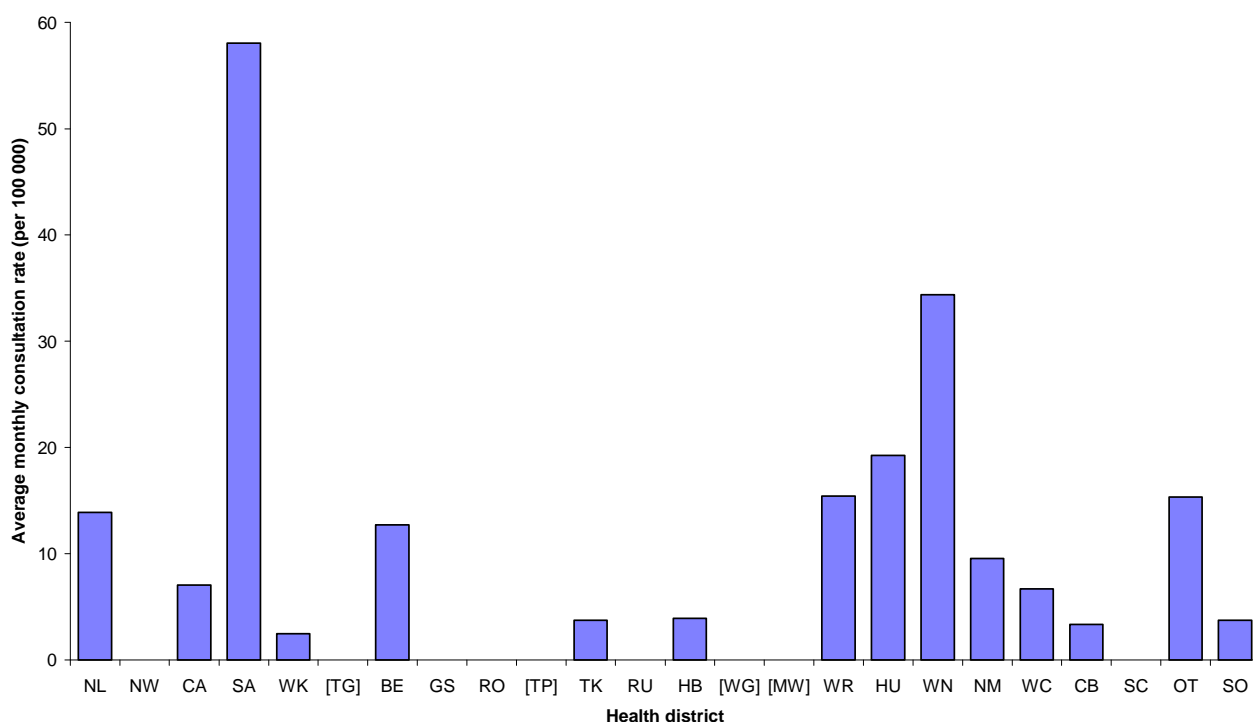


INFLUENZA SURVEILLANCE SUMMARY - DECEMBER 2009

During December (weeks 49- 53), 136 consultations for influenza-like illness were reported from 52 general practices (on average) in 20 of the 24 health districts. The average weekly consultation rate for December was 12.2 per 100 000 patient population.

Figure 1 compares the average weekly consultation rates for influenza-like illness for each health district during December. South Auckland had the highest consultation rate (58.1 per 100 000), followed by Wellington (34.4 per 100 000), and Hutt (19.3 per 100 000).

Figure 1: Average weekly consultation rates for influenza-like illness by health district, December 2009



[] Health districts did not participate for the month.

A total of 17 swabs were received by the regional virology laboratories from sentinel surveillance. No influenza viruses were identified.

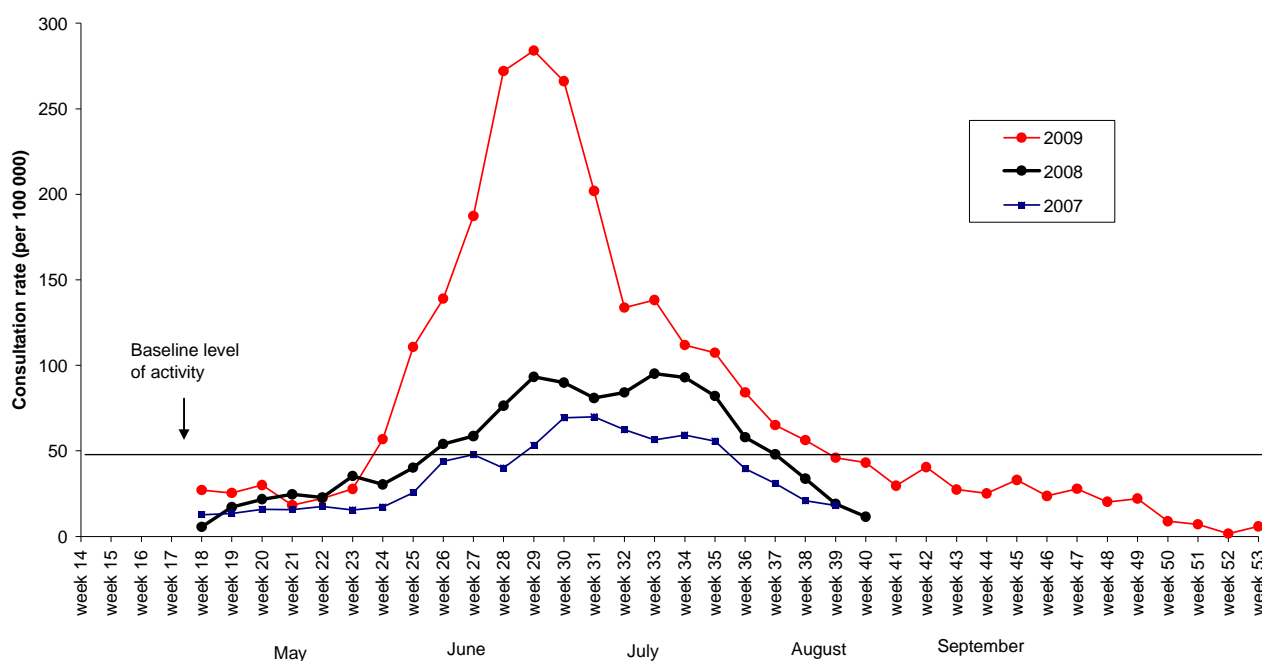
Fourteen influenza viruses were reported from the laboratory-based (non-sentinel) surveillance: Pandemic (H1N1) 09 (12) and A (not sub-typed) (2). The distribution by health district is shown in Table 1.

Table 1: Influenza viruses from non-sentinel surveillance in December by Health District

Antigenic Strain	NL	SA	WK	WN	CB	Total
A (not sub-typed)	0	0	0	0	2	2
Pandemic (H1N1) 09	1	2	1	6	2	12
Grand Total	1	2	1	6	4	14

Figure 2 shows the national weekly consultation rates to the end of week 53, December 2009 and rates in 2008 and 2007. As seen in the previous years, the rates of influenza-like illness have decreased gradually between week 34 and week 40. However, ILI consultations from the GP sentinel surveillance program are still being reported after week 40 in response to the influenza pandemic this year.

Figure 2: Weekly consultation rates for influenza-like illness in New Zealand, 2007, 2008 and 2009



Compiled by:

Liza Lopez

Population and Environmental Health

ESR Kenepuru Science Centre

PO Box 50 348, PORIRUA

Tel : 04 914 0647 Fax: 04 978 6690 Email:liza.lopez@esr.cri.nz

Dr. Sue Huang

WHO National Influenza Centre

ESR Wallaceville Science Centre

PO Box 40158, Upper Hutt