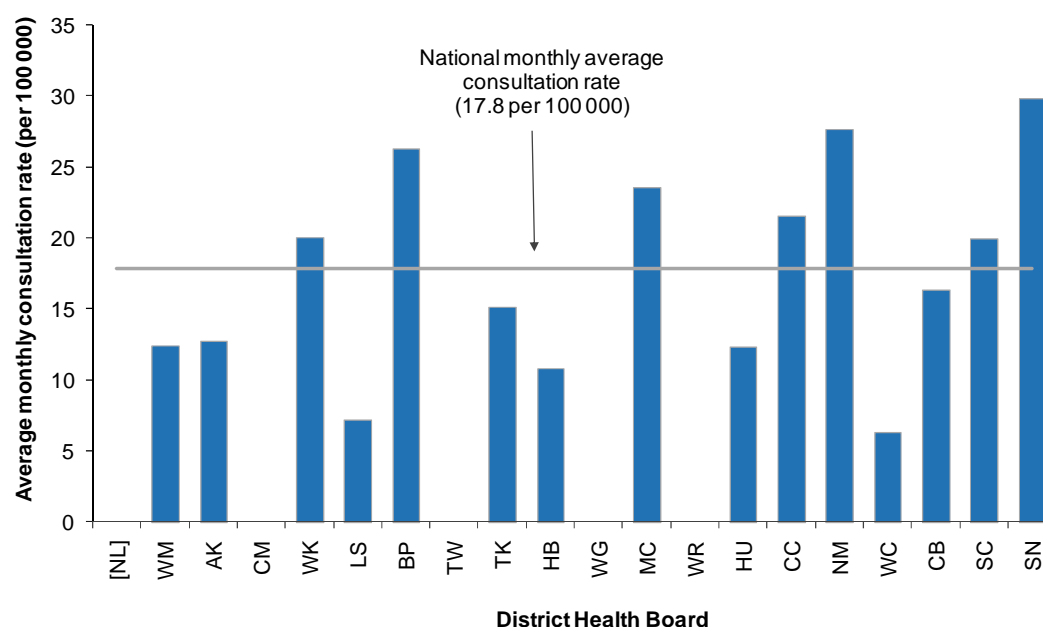


INFLUENZA SURVEILLANCE SUMMARY - MAY 2011

During May (weeks 18 – 21), 237 consultations for influenza-like illness were reported from 73 general practices (on average) in 19 of the 20 District Health Boards (DHB). The average monthly consultation rate for May was 17.8 per 100 000 patient population.

Figure 1 compares the average monthly consultation rates for influenza-like illness for each DHB during May. Southern had the highest consultation rate (29.8 per 100 000, 51 cases), followed by Nelson Marlborough (27.6 per 100 000, 16 cases) and Bay of Plenty (26.3 per 100 000, 4 cases).

Figure 1: Average monthly consultation rates for influenza-like illness by DHB, May 2011



[] No data for the month

A total of 274 swabs were received for testing during May from sentinel (61) and non-sentinel (213) surveillance. Ten viruses were identified from sentinel and seven from non-sentinel surveillance. The distribution by DHB is shown in Table 1 and Table 2 respectively.

Table 1: Sentinel viruses for May 2011 by DHB

Antigenic Strain	AK	BP	HB	NM	CB	SN	Total
A (not sub-typed)	0	0	1	0	0	0	1
B	3	1	0	2	0	1	7
Pandemic A (H1N1) 09	0	0	1	0	1	0	2
Total	3	1	2	2	1	1	10

Table 2: Non-sentinel viruses for May 2011 by DHB

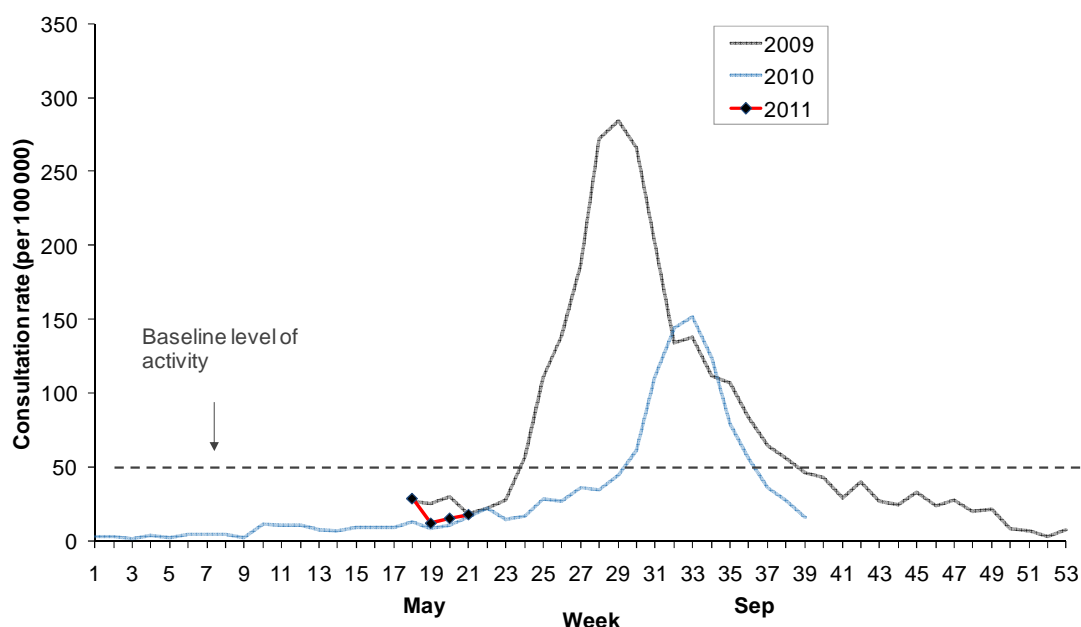
Antigenic Strain	AK	WK	MC	CC	Total
A (H3N2)	0	0	0	2	2
B	3	1	1	0	5
Total	3	1	1	2	7

Table 3: DHB codes and Descriptions

DHB code	DHB
NL	Northland
WM	Waitemata
AK	Auckland
CM	Counties Manukau
WK	Waikato
LS	Lakes
BP	Bay of Plenty
TW	Tairāwhiti
TK	Taranaki
HB	Hawke's Bay
WG	Whanganui
MC	MidCentral
WR	Wairarapa
HU	Hutt Valley
CC	Capital and Coast
NM	Nelson Marlborough
WC	West Coast
CB	Canterbury
SC	South Canterbury
SN	Southern

Figure 2 shows the national weekly consultation rates to the end of week 21, May 2011 and rates in 2010 and 2009.

Figure 2: Weekly consultation rates for influenza-like illness in New Zealand, 2009, 2010 and 2011



Compiled by:
 Liza Lopez
 Health Intelligence Team
 ESR Kenepuru Science Centre
 PO Box 50 348, PORIRUA
 Tel : 04 914 0647 Fax: 04 978 6690 Email:liza.lopez@esr.cri.nz

Dr. Sue Huang
 WHO National Influenza Centre
 ESR Wallaceville Science Centre
 PO Box 40158, Upper Hutt