

INFLUENZA SURVEILLANCE SUMMARY - JULY 2011

During July (weeks 26 – 30), 1019 consultations for influenza-like illness were reported from 82 general practices (on average) in all 20 District Health Boards (DHB). The average monthly consultation rate for July was 52.7 per 100 000 patient population. Figure 1 shows the national weekly consultation rates to the end of week 30, July 2011 and rates in 2010 and 2009.

Figure 1: Weekly consultation rates for influenza-like illness in New Zealand, 2009, 2010 and 2011

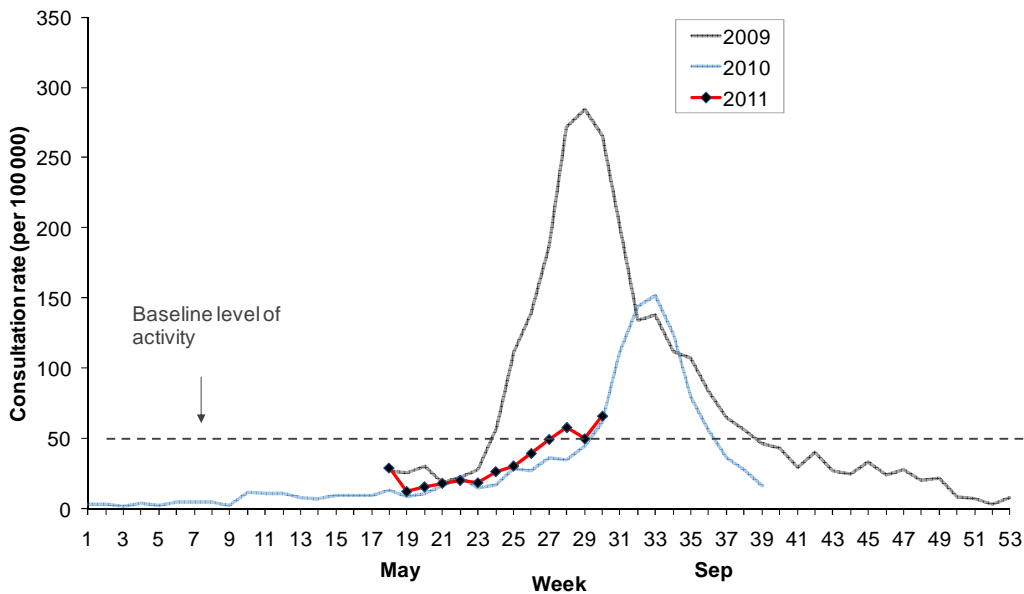
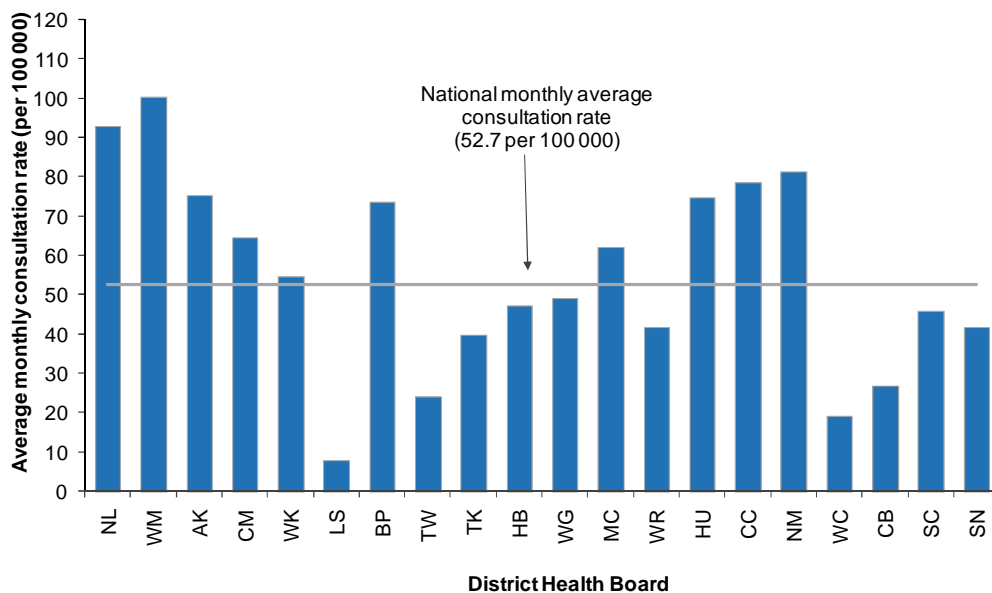


Figure 2 compares the average monthly consultation rates for influenza-like illness for each DHB during July. Waitemata had the highest consultation rate (100.5 per 100 000, 49 cases), followed by Northland (92.9 per 100 000, 78 cases) and Nelson Marlborough (81.3 per 100 000, 71 cases).

Figure 2: Average monthly consultation rates for influenza-like illness by DHB, July 2011



A total of 1513 swabs were received for testing during July from sentinel (229) and non-sentinel (1284) surveillance. Ninety-one viruses were identified from sentinel and 197 from non-sentinel surveillance. The distribution by DHB is shown in Table 1 and Table 2 respectively.

Table 1: Sentinel viruses for July 2011 by DHB

Antigenic Strain	NL	AK	WK	BP	TK	HB	WG	MC	HU	CC	NM	CB	SN	Total
A (not sub-typed)	0	2	0	0	0	2	0	1	0	0	0	0	1	6
A(H3N2)	0	2	0	0	0	3	0	2	1	1	0	1	0	10
B	6	6	8	1	4	12	4	12	1	3	4	6	4	71
Pandemic A(H1N1) 09	0	1	0	0	0	2	1	0	0	0	0	0	0	4
Total	6	11	8	1	4	19	5	15	2	4	4	7	5	91

Table 2: Non-sentinel viruses for July 2011 by DHB

Antigenic Strain	WM	AK	CM	WK	LS	BP	TK	HB	MC	CC	WC	CB	SC	SN	Total
A (not sub-typed)	1	5	6	4	0	0	0	0	1	1	0	1	1	0	20
A(H3N2)	1	9	12	0	0	0	0	0	1	6	0	6	1	1	37
B	4	18	29	51	1	2	1	0	3	14	0	7	0	0	130
Pandemic A(H1N1) 09	0	2	2	0	0	0	0	1	0	1	1	3	0	0	10
Total	6	34	49	55	1	2	1	1	5	22	1	17	2	1	197

Table 3: DHB codes and Descriptions

DHB code	DHB
NL	Northland
WM	Waitemata
AK	Auckland
CM	Counties Manukau
WK	Waikato
LS	Lakes
BP	Bay of Plenty
TW	Tairāwhiti
TK	Taranaki
HB	Hawke's Bay
WG	Whanganui
MC	MidCentral
WR	Wairarapa
HU	Hutt Valley
CC	Capital and Coast
NM	Nelson Marlborough
WC	West Coast
CB	Canterbury
SC	South Canterbury
SN	Southern