

INFLUENZA SURVEILLANCE SUMMARY - AUGUST 2011

During August (weeks 31 – 34), 783 consultations for influenza-like illness were reported from 83 general practices (on average) in all 20 District Health Boards (DHB). The average monthly consultation rate for August was 50.8 per 100 000 patient population. Figure 1 shows the national weekly consultation rates to the end of week 34, August 2011 and rates in 2010 and 2009.

Figure 1: Weekly consultation rates for influenza-like illness in New Zealand, 2009, 2010 and 2011

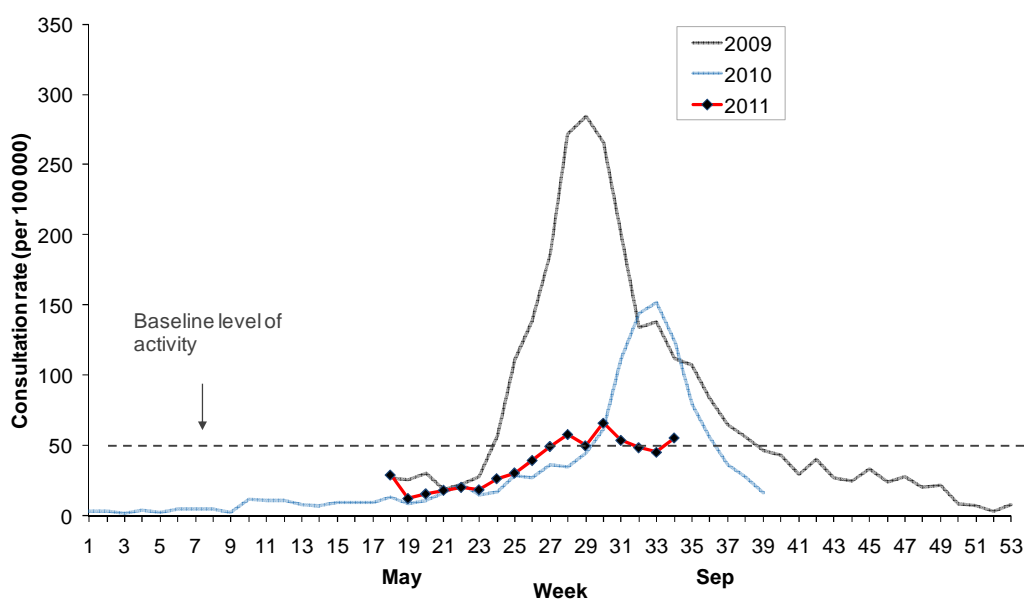
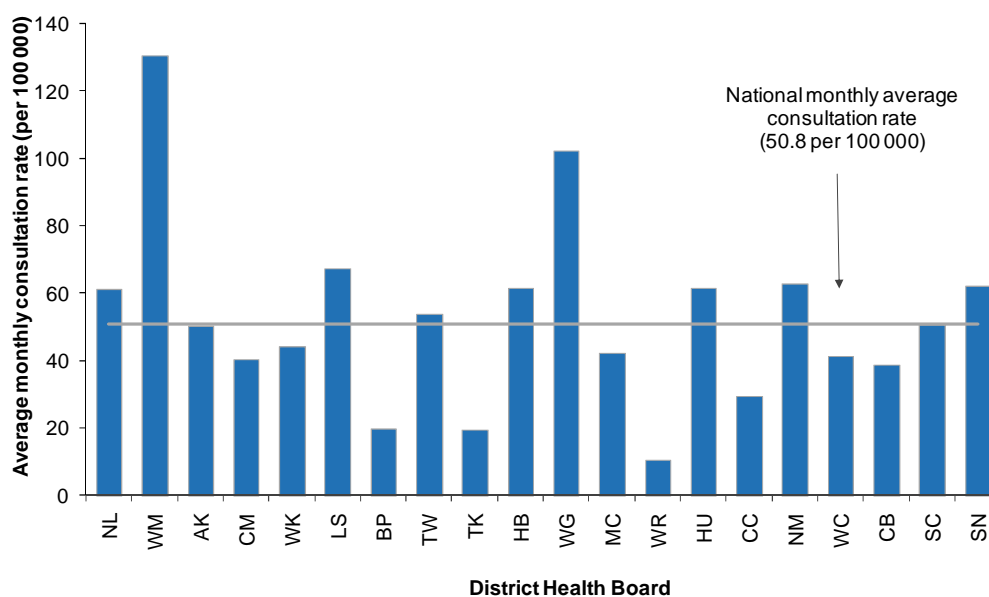


Figure 2 compares the average monthly consultation rates for influenza-like illness for each DHB during August. Waitemata had the highest consultation rate (130.6 per 100 000, 54 cases), followed by Whanganui (102.2 per 100 000, 35 cases) and Lakes (67.3 per 100 000, 8 cases).

Figure 2: Average monthly consultation rates for influenza-like illness by DHB, August 2011



A total of 1270 swabs were received for testing during August from sentinel (186) and non-sentinel (1084) surveillance. One hundred and nine viruses were identified from sentinel and 243 from non-sentinel surveillance. The distribution by DHB is shown in Table 1 and Table 2 respectively.

Table 1: Sentinel viruses for August 2011 by DHB

Antigenic Strain	NL	AK	WK	BP	TW	TK	HB	WG	MC	HU	CC	NM	WC	CB	SC	SN	Total
A (not sub-typed)	0	4	0	0	0	0	1	0	2	0	0	1	0	0	2	0	10
A(H3N2)	1	0	1	1	1	1	7	0	5	0	1	2	0	2	1	0	23
B	1	8	5	1	0	1	5	1	9	2	5	10	1	8	1	10	68
Pandemic A(H1N1) 09	0	0	0	0	0	0	0	0	0	0	0	0	0	5	1	2	8
Total	2	12	6	2	1	2	13	1	16	2	6	13	1	15	5	12	109

Table 2: Non-sentinel viruses for August 2011 by DHB

Antigenic Strain	WM	AK	CM	WK	BP	LS	TK	HB	MC	CC	NM	WC	CB	SN	Total
A (not sub-typed)	0	12	6	5	0	0	0	2	0	0	0	0	0	0	25
A(H3N2)	0	12	32	2	0	0	0	3	1	14	1	0	25	2	92
B	2	11	8	35	1	1	1	0	2	14	0	1	23	1	100
Pandemic A(H1N1) 09	0	2	1	2	0	0	0	0	0	5	0	1	14	1	26
Total	2	37	47	44	1	1	1	5	3	33	1	2	62	4	243

Table 3: DHB codes and Descriptions

DHB code	DHB
NL	Northland
WM	Waitemata
AK	Auckland
CM	Counties Manukau
WK	Waikato
LS	Lakes
BP	Bay of Plenty
TW	Tairāwhiti
TK	Taranaki
HB	Hawke's Bay
WG	Whanganui
MC	MidCentral
WR	Wairarapa
HU	Hutt Valley
CC	Capital and Coast
NM	Nelson Marlborough
WC	West Coast
CB	Canterbury
SC	South Canterbury
SN	Southern