

INFLUENZA SURVEILLANCE SUMMARY - SEPTEMBER 2011

During September (weeks 35 – 38), 770 consultations for influenza-like illness were reported from 82 general practices (on average) in all 20 District Health Boards (DHB). The average monthly consultation rate for September was 50.2 per 100 000 patient population. Figure 1 shows the national weekly consultation rates to the end of week 38, September 2011 and rates in 2010 and 2009.

Figure 1: Weekly consultation rates for influenza-like illness in New Zealand, 2009, 2010 and 2011

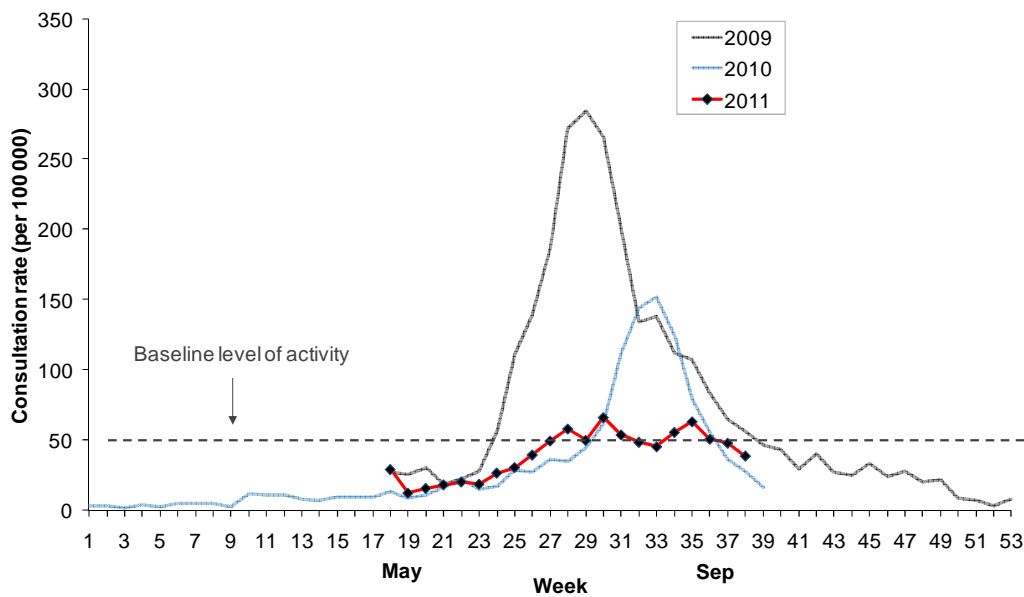
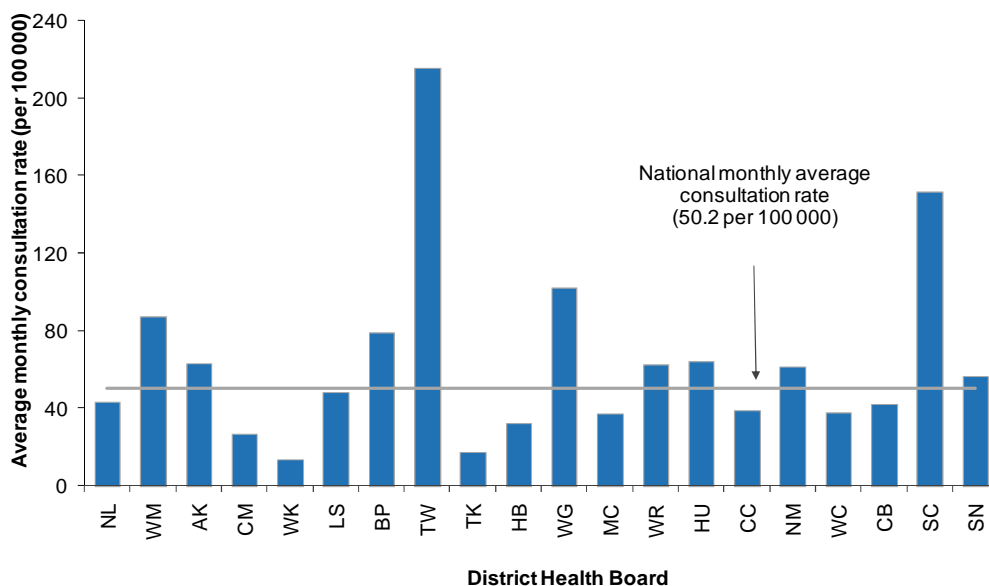


Figure 2 compares the average monthly consultation rates for influenza-like illness for each DHB during September. Tairāwhiti had the highest consultation rate (215.3 per 100 000, 20 cases), followed by South Canterbury (151.6 per 100 000, 45 cases) and Whanganui (102.2 per 100 000, 35 cases).

Figure 2: Average monthly consultation rates for influenza-like illness by DHB, September 2011



A total of 1441 swabs were received for testing during September from sentinel (189) and non-sentinel (1252) surveillance. Seventy-four viruses were identified from sentinel and 239 from non-sentinel surveillance. The distribution by DHB is shown in Table 1 and Table 2 respectively.

Table 1: Sentinel viruses for September 2011 by DHB

Antigenic Strain	AK	BP	TW	TK	HB	WG	MC	HU	CC	NM	WC	CB	SC	SN	Total
A (not sub-typed)	1	3	0	0	0	1	1	0	2	0	0	2	0	1	11
A(H3N2)	0	0	1	1	1	2	5	1	3	0	0	6	1	3	24
B	3	0	0	0	0	1	1	0	1	3	2	18	1	4	34
Pandemic A(H1N1) 09	0	0	0	1	0	0	0	0	0	0	0	4	0	0	5
Total	4	3	1	2	1	4	7	1	6	3	2	30	2	8	74

Table 2: Non-sentinel viruses for September 2011 by DHB

Antigenic Strain	NL	WM	AK	CM	WK	BP	TK	HB	MC	CC	WC	CB	SC	SN	Total
A (not sub-typed)	0	0	28	4	7	1	0	2	4	0	1	9	0	1	57
A(H3N2)	2	2	18	32	1	0	1	0	2	13	0	28	0	1	100
B	0	2	3	1	10	0	0	3	0	10	2	35	1	1	68
Pandemic A(H1N1) 09	0	0	2	2	0	0	0	0	0	1	0	7	1	1	14
Total	2	4	51	39	18	1	1	5	6	24	3	79	2	4	239

Table 3: DHB codes and Descriptions

DHB code	DHB
NL	Northland
WM	Waitemata
AK	Auckland
CM	Counties Manukau
WK	Waikato
LS	Lakes
BP	Bay of Plenty
TW	Tairāwhiti
TK	Taranaki
HB	Hawke's Bay
WG	Whanganui
MC	MidCentral
WR	Wairarapa
HU	Hutt Valley
CC	Capital and Coast
NM	Nelson Marlborough
WC	West Coast
CB	Canterbury
SC	South Canterbury
SN	Southern