

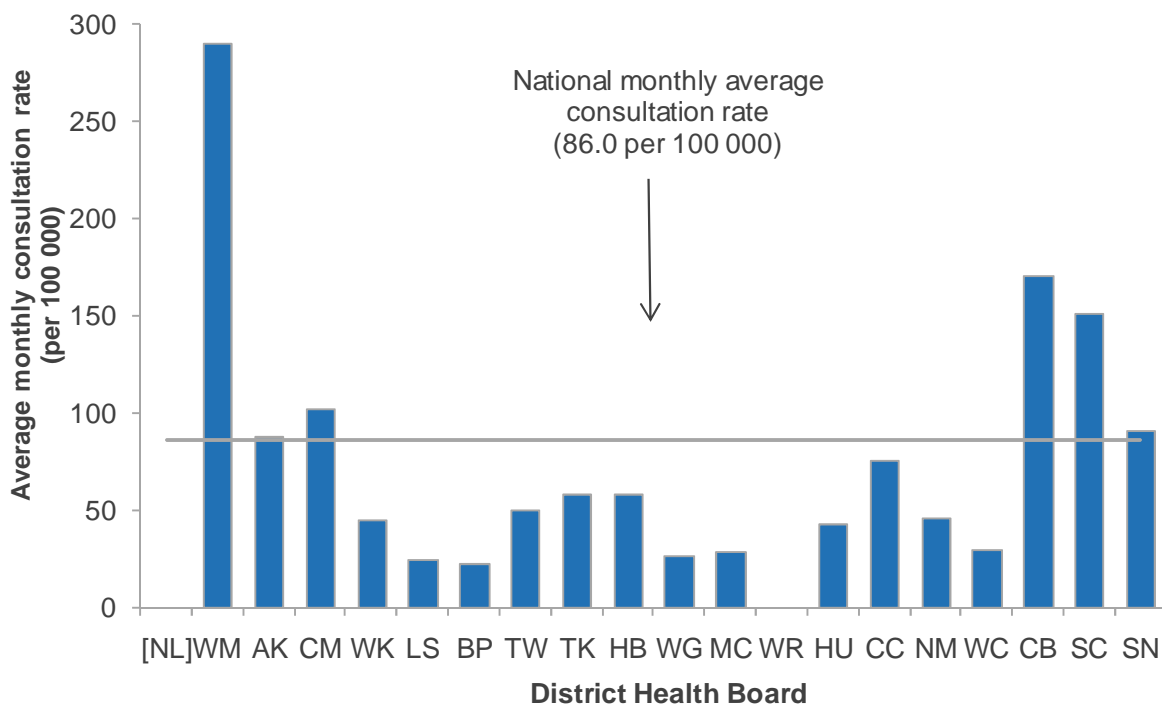


INFLUENZA SURVEILLANCE SUMMARY - JULY 2012

During July (weeks 26 – 30), 1610 consultations for influenza-like illness were reported from 82 general practices (on average) in 19 of the 20 District Health Boards (DHB). The average monthly consultation rate for July was 86.0 per 100 000 patient population.

Figure 1 compares the average monthly consultation rates for influenza-like illness for each DHB during July. Waitemata had the highest consultation rate (288.9 per 100 000, 140 cases) followed by Canterbury (169.8 per 100 000, 602 cases). The following DHBs also had rates above the monthly national average of 86.0 per 100 000: South Canterbury, Counties Manukau, Southern and Auckland.

Figure 1: Average monthly consultation rates for influenza-like illness by DHB, July 2012



[] Not participating in the influenza surveillance

A total of 3155 swabs were received for testing during July from sentinel (357) and non-sentinel (2798) surveillance. A total of 1213 viruses were identified, 203 from sentinel and 1010 from non-sentinel surveillance. The distribution by DHB is shown in Table 1 and Table 2 respectively.

Table 1: Sentinel viruses for July 2012 by DHB

Antigenic Strain	AK/WM	WK	LS	BP	TW	TK	HB	MC	HU	CC	NM	CB	SC	SN	Total
A (Not subtyped)	1	1	0	0	0	2	0	0	0	0	0	1	0	1	6
A(H1N1)pdm09	0	0	0	0	0	0	1	0	0	1	0	3	0	0	5
A/California/7/2009 (H1N1)-like	8	0	0	0	1	0	0	0	0	4	0	0	0	2	15
A(H3N2)	0	0	0	0	0	6	1	2	1	2	3	80	2	8	105
A/Perth/16/2009 (H3N2)-like	6	3	2	5	1	6	9	1	1	14	4	5	0	9	66
B (Lineage not determined)	1	0	0	0	0	0	0	0	0	0	0	1	0	0	2
B/Brisbane/60/2008-like	0	0	0	0	0	0	0	0	0	0	1	0	0	0	1
B/Wisconsin/1/2010-like	2	0	0	0	0	0	0	0	0	1	0	0	0	0	3
Total	18	4	2	5	2	14	11	3	2	22	8	90	2	20	203

Table 2: Non-sentinel viruses for July 2012 by DHB

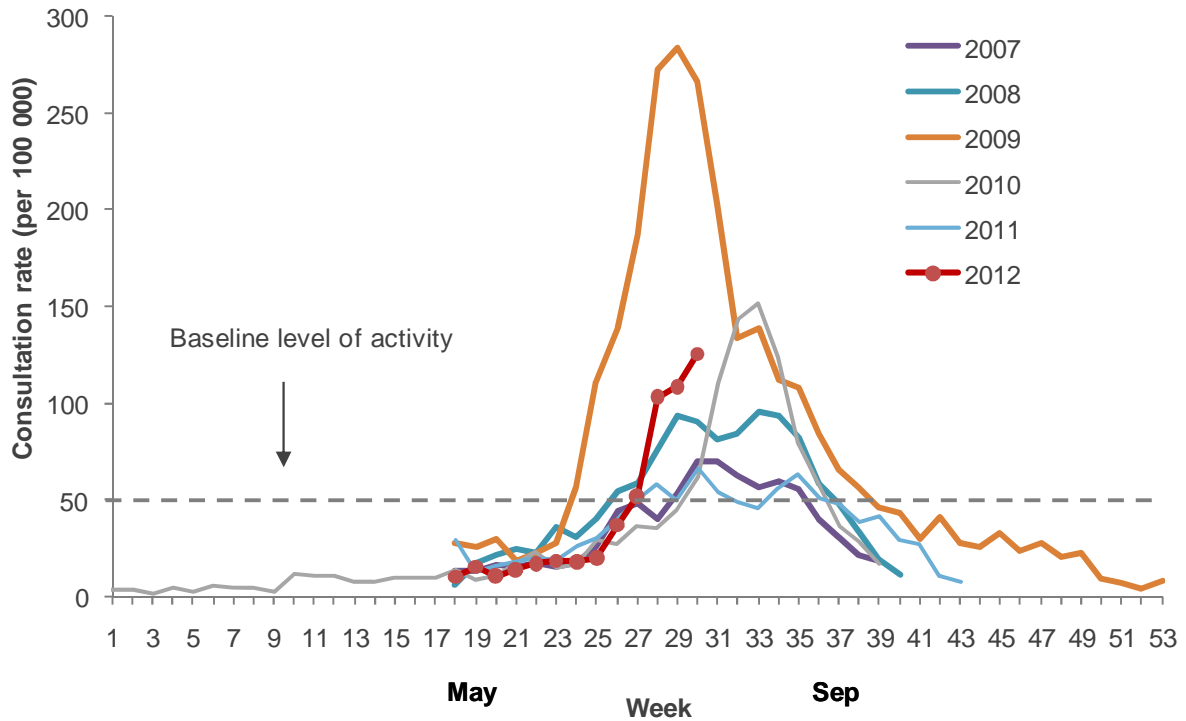
Antigenic Strain	AK/WM	CM	WK	LS	BP	TW	TK	HB	MC	HU	CC	NM	CB	SC	SN	Total
A (Not subtyped)	71	2	13	5	2	0	0	1	0	0	1	0	3	0	0	98
A(H1N1)pdm09	13	67	2	1	1	0	2	2	1	0	7	0	4	0	0	100
A/California/7/2009 (H1N1)-like	11	15	6	0	0	0	0	0	0	0	0	0	0	0	0	32
A(H3N2)	16	38	13	1	1	2	10	2	8	1	24	4	487	5	4	616
A/Perth/16/2009 (H3N2)-like	20	17	13	2	0	0	0	0	0	0	0	0	29	0	0	81
B (Lineage not determined)	21	24	1	0	0	0	0	0	0	1	1	0	7	0	2	57
B/Brisbane/60/2008-like	1	2	1	0	0	0	0	0	0	0	0	0	0	0	0	4
B/Wisconsin/1/2010-like	7	15	0	0	0	0	0	0	0	0	0	0	0	0	0	22
Total	160	180	49	9	4	2	12	5	9	2	33	4	530	5	6	1010

Table 3: DHB codes and Descriptions

DHB code	DHB
NL	Northland
WM	Waitemata
AK	Auckland
CM	Counties Manukau
WK	Waikato
LS	Lakes
BP	Bay of Plenty
TW	Tairāwhiti
TK	Taranaki
HB	Hawke's Bay
WG	Whanganui
MC	MidCentral
WR	Wairarapa
HU	Hutt Valley
CC	Capital and Coast
NM	Nelson Marlborough
WC	West Coast
CB	Canterbury
SC	South Canterbury
SN	Southern

Figure 2 shows the national weekly consultation rates to the end of week 30, July 2012 and rates in 2007-2011.

Figure 2: Weekly consultation rates for influenza-like illness in New Zealand, 2010, 2011 and 2012



* A weekly rate <50 ILI consultations per 100 000 patient population is considered baseline activity. A rate of 50–249 is considered indicative of normal seasonal influenza activity, and a rate of 250–399 indicative of higher than expected influenza activity. A rate >400 ILI consultations per 100 000 patient population indicates an epidemic level of influenza

Compiled by:

Liza Lopez

Health Intelligence Team
 ESR Kenepuru Science Centre
 PO Box 50 348, Porirua

T: 04 914 0647 F: 04 978 6690 E: liza.lopez@esr.cri.nz

Dr. Sue Huang

WHO National Influenza Centre
 ESR Wallaceville Science Centre
 PO Box 40158, Upper Hutt