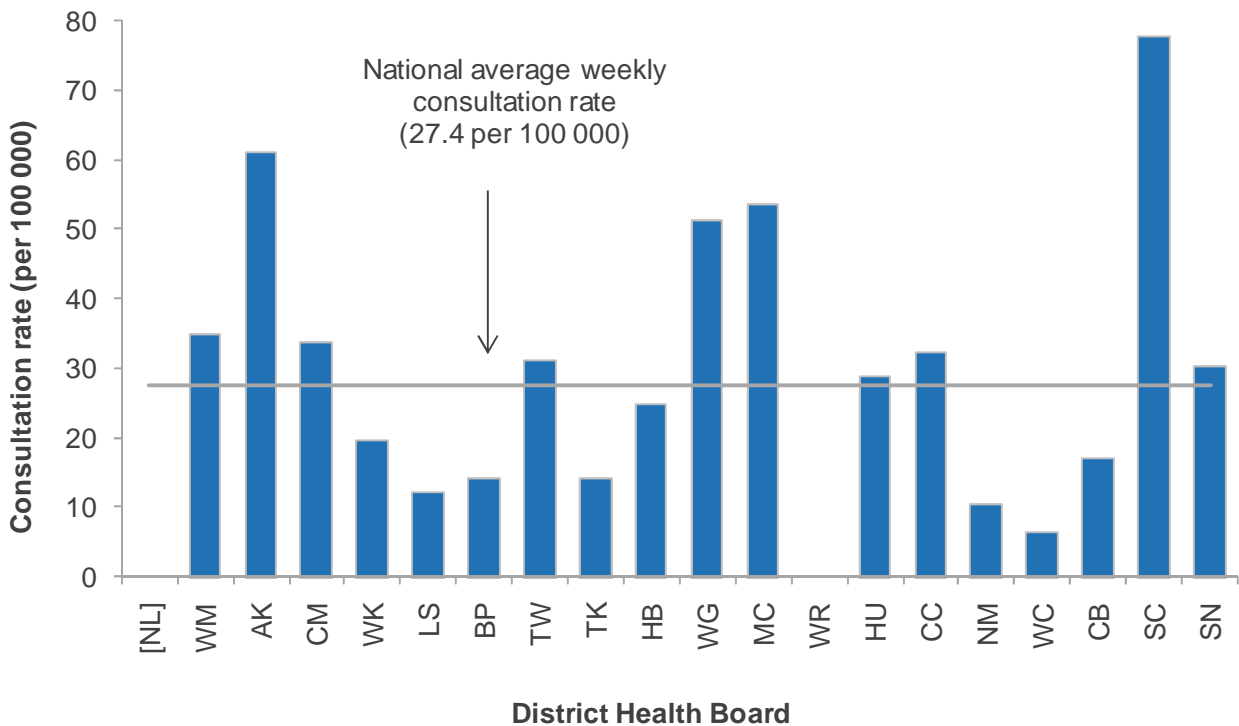


INFLUENZA SURVEILLANCE SUMMARY - SEPTEMBER 2012

During September (weeks 35 – 39), 519 consultations for influenza-like illness were reported from 80 general practices (on average) in 19 of the 20 District Health Boards (DHB). The average monthly consultation rate for September was 27.4 per 100 000 patient population.

Figure 1 compares the average monthly consultation rates for influenza-like illness for each DHB during September. South Canterbury had the highest consultation rate (77.8 per 100 000, 30 cases) followed by Auckland (61.2 per 100 000, 59 cases). The following DHBs also had rates above the monthly national average of 27.4 per 100 000: MidCentral, Whanganui, Waitemata, Counties Manukau, Capital and Coast, Tairāwhiti, Southern and Hutt Valley.

Figure 1: Average monthly consultation rates for influenza-like illness by DHB, September 2012



[] Not participating in the influenza surveillance

A total of 1254 swabs were received for testing during September from sentinel (102) and non-sentinel (1152) surveillance. A total of 185 viruses were identified, 14 from sentinel and 171 from non-sentinel surveillance. The distribution by DHB is shown in Table 1 and Table 2 respectively.

Table 1: Sentinel viruses for September 2012 by DHB

| Antigenic strain | DHB | | | | | | | | Total |
|-----------------------------|----------|----------|----------|----------|----------|----------|----------|----------|-----------|
| | AK/WM | WK | LS | BP | TK | WG | MC | CB | |
| A (not subtyped) | 4 | 2 | 0 | 0 | 0 | 0 | 0 | 0 | 6 |
| A(H1N1)pdm09 | 0 | 0 | 0 | 0 | 0 | 0 | 0 | 1 | 1 |
| A(H3N2) | 0 | 0 | 0 | 0 | 0 | 0 | 0 | 1 | 1 |
| A/Perth/16/2009 (H3N2)-like | 0 | 0 | 0 | 1 | 0 | 1 | 0 | 0 | 2 |
| B (Lineage not determined) | 0 | 0 | 1 | 0 | 0 | 0 | 0 | 0 | 1 |
| B/Wisconsin/1/2010-like | 0 | 0 | 0 | 0 | 1 | 1 | 1 | 0 | 3 |
| Total | 4 | 2 | 1 | 1 | 1 | 2 | 1 | 2 | 14 |

Table 2: Non-sentinel viruses for September 2012 by DHB

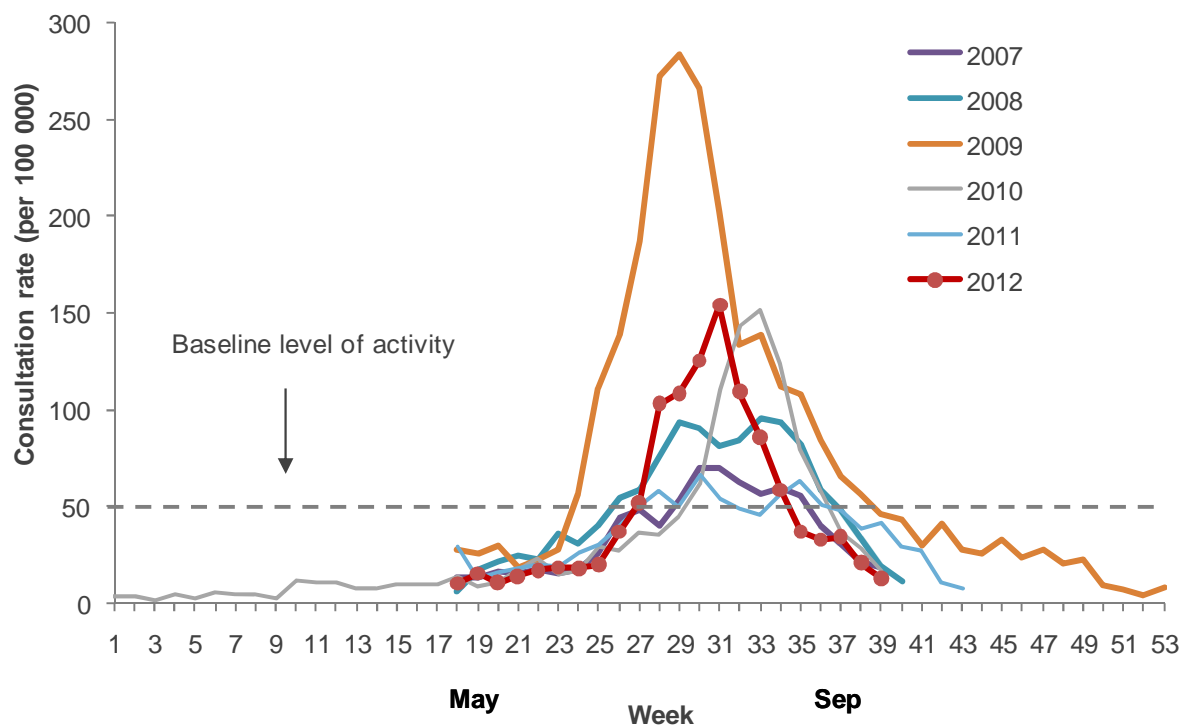
| Antigenic strain | DHB | | | | | | | | | | Total |
|---------------------------------|-----------|-----------|-----------|----------|----------|-----------|----------|----------|----------|----------|------------|
| | AK/WM | CM | WK | LS | MC | CC | NM | CB | SC | SN | |
| A (not subtyped) | 25 | 4 | 19 | 1 | 0 | 14 | 0 | 0 | 0 | 0 | 63 |
| A(H1N1)pdm09 | 1 | 2 | 0 | 0 | 0 | 0 | 0 | 1 | 0 | 0 | 4 |
| A/California/7/2009 (H1N1)-like | 1 | 0 | 0 | 0 | 0 | 0 | 0 | 0 | 0 | 0 | 1 |
| A(H3N2) | 5 | 31 | 0 | 0 | 1 | 6 | 5 | 3 | 3 | 1 | 55 |
| A/Perth/16/2009 (H3N2)-like | 0 | 3 | 2 | 0 | 0 | 0 | 0 | 0 | 0 | 0 | 5 |
| B (Lineage not determined) | 9 | 13 | 6 | 0 | 0 | 15 | 0 | 0 | 0 | 0 | 43 |
| Total | 41 | 53 | 27 | 1 | 1 | 35 | 5 | 4 | 3 | 1 | 171 |

Table 3: DHB codes and Descriptions

| DHB code | DHB |
|----------|--------------------|
| NL | Northland |
| WM | Waitemata |
| AK | Auckland |
| CM | Counties Manukau |
| WK | Waikato |
| LS | Lakes |
| BP | Bay of Plenty |
| TW | Tairāwhiti |
| TK | Taranaki |
| HB | Hawke's Bay |
| WG | Whanganui |
| MC | MidCentral |
| WR | Wairarapa |
| HU | Hutt Valley |
| CC | Capital and Coast |
| NM | Nelson Marlborough |
| WC | West Coast |
| CB | Canterbury |
| SC | South Canterbury |
| SN | Southern |

Figure 2 shows the national weekly consultation rates to the end of week 39, September 2012 and rates in 2007–2011.

Figure 2: Weekly consultation rates for influenza-like illness in New Zealand, 2010, 2011 and 2012



* A weekly rate <50 ILI consultations per 100 000 patient population is considered baseline activity. A rate of 50–249 is considered indicative of normal seasonal influenza activity, and a rate of 250–399 indicative of higher than expected influenza activity. A rate >400 ILI consultations per 100 000 patient population indicates an epidemic level of influenza

Compiled by:

Liza Lopez

Health Intelligence Team
ESR Kenepuru Science Centre
PO Box 50 348, Porirua

T: 04 914 0647 F: 04 978 6690 E: liza.lopez@esr.cri.nz

Dr. Sue Huang

WHO National Influenza Centre
ESR Wallaceville Science Centre
PO Box 40158, Upper Hutt