

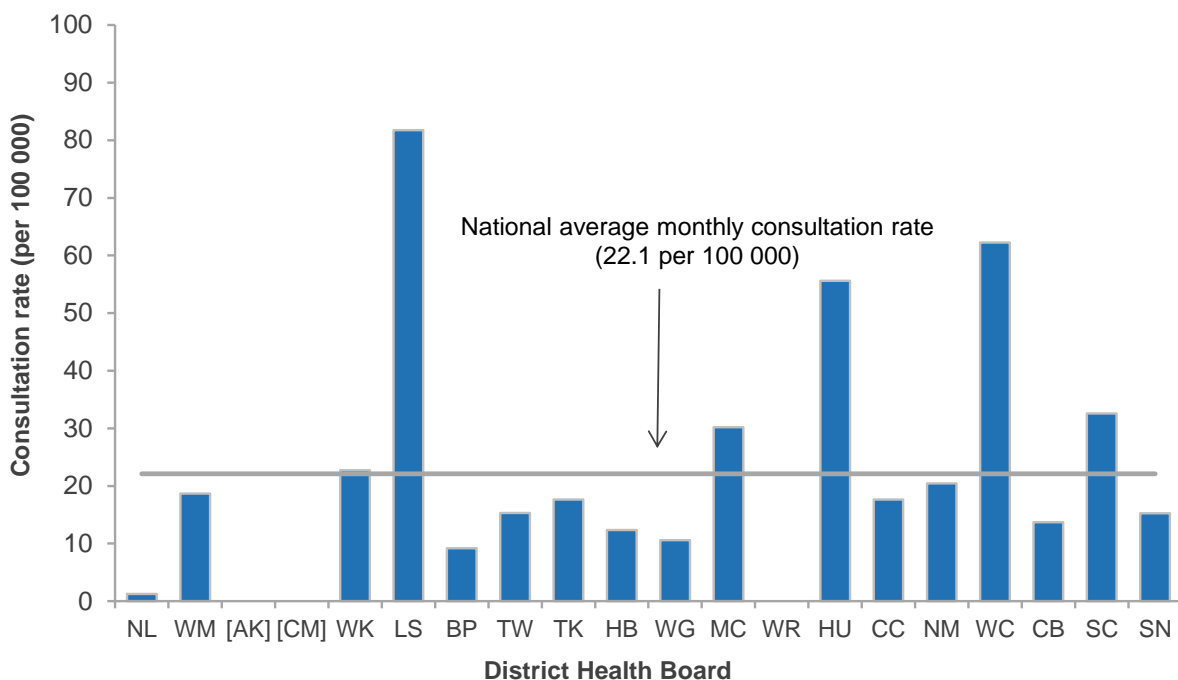


# INFLUENZA SURVEILLANCE SUMMARY - JULY 2013

During July (weeks 27–30), 324 consultations for influenza-like illness were reported from 67 general practices (on average) in 18 of the 20 District Health Boards (DHB). The average monthly consultation rate for July was 22.1 per 100 000 patient population.

Figure 1 compares the average monthly consultation rates for influenza-like illness for each DHB during July. Lakes had the highest consultation rate (81.7 per 100 000, 9 cases), followed by West Coast (62.3 per 100 000, 49 cases), and Hutt Valley (55.6 per 100 000, 66 cases).

**Figure 1. Average monthly consultation rates for influenza-like illness by DHB, July 2013**

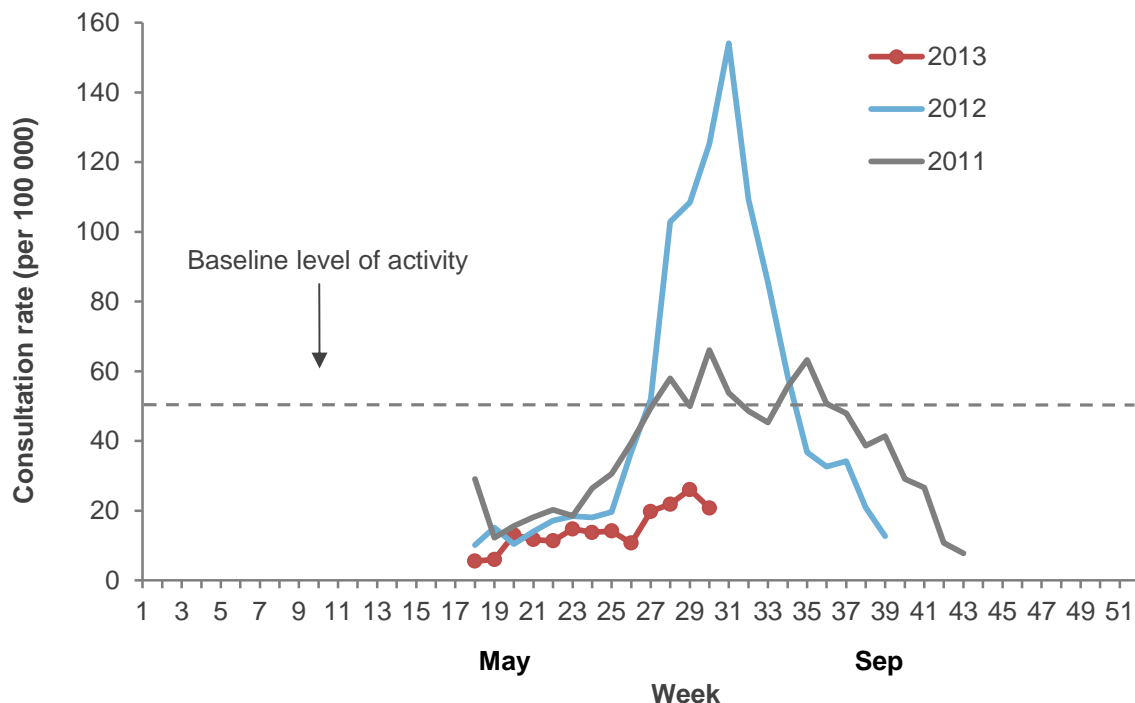


[ ] Not participating in the influenza sentinel surveillance.

Note: Auckland (AK) and Counties Manukau (CM) DHBs follow the Southern Hemisphere Influenza and Vaccine Effectiveness Research and Surveillance (SHIVERS) case definition which is different from this sentinel surveillance. Based on the SHIVERS weekly report, the ILI incidence for Auckland and Counties Manukau DHBs for July were 468.2 per 100 000 and 197.2 per 100 000 patient populations, respectively. For more details, please refer to the website: <http://www.esr.cri.nz/competencies/shivers/Pages/SHIVERSReports.aspx>

Figure 2 shows the national weekly consultation rates to the end of week 30, July 2013 and rates in 2012 and 2011.

**Figure 2. Weekly consultation rates for influenza-like illness in New Zealand, 2011, 2012 and 2013**



\* A weekly rate <50 ILI consultations per 100 000 patient population is considered baseline activity. A rate of 50–249 is considered indicative of normal seasonal influenza activity, and a rate of 250–399 indicative of higher than expected influenza activity. A rate >400 ILI consultations per 100 000 patient population indicates an epidemic level of influenza

## VIROLOGICAL SURVEILLANCE

A total of 88 swabs were received by virology laboratories from sentinel surveillance. Twenty-one viruses were identified: B (14) including four B/Wisconsin/1/2010-like viruses, A(H3N2) (4) including one A/Victoria/361/2011 (H3N2)-like virus, A (not sub-typed) (2), and A A/California/7/2009 (H1N1)-like virus (1). The distribution by DHB is shown in Table 1.

**Table 1. Influenza viruses from sentinel surveillance for July by DHB**

Antigenic strain	DHB									Total
	NL	WM	WK	LS	BP	MC	CC	CB	SN	
A (not sub-typed)	0	0	0	0	0	2	0	0	0	2
A(H3N2)	1	0	0	0	0	1	1	0	0	3
A/Victoria/361/2011 (H3N2)	0	0	0	0	0	1	0	0	0	1
A/California/7/2009 (H1N1)-like	0	0	0	0	0	0	0	0	1	1
B (lineage not determined)	1	4	1	2	1	0	0	1	0	10
B/Wisconsin/1/2010-like	0	0	0	1	3	0	0	0	0	4
<b>Total</b>	<b>2</b>	<b>4</b>	<b>1</b>	<b>3</b>	<b>4</b>	<b>4</b>	<b>1</b>	<b>1</b>	<b>1</b>	<b>21</b>

In addition, 852 swabs were received by virology laboratories from non-sentinel surveillance. Of these, 277 influenza viruses were identified: B (166) including 36 B/Wisconsin/1/2010-like viruses, A(H3N2) (53) including 15 A/Victoria/361/2011 (H3N2)-like viruses, A (not

sub-typed) (35), and A(H1N1)pdm09 (23) including eight A/California/7/2009 (H1N1)-like viruses. The distribution by DHB is shown in Table 2.

**Table 2. Influenza viruses from non-sentinel surveillance for July by DHB**

Antigenic strain	DHB									Total
	WM	AK	CM	WK	LS	BP	MC	CC	CB	
A (not sub-typed)	2	29	3	0	0	0	0	1	0	<b>35</b>
A(H1N1)pdm09	0	8	2	3	0	0	2	0	0	<b>15</b>
A/California/7/2009 (H1N1)-like	0	1	4	0	0	2	0	0	1	<b>8</b>
A(H3N2)	5	12	19	1	0	0	0	0	1	<b>38</b>
A/Victoria/361/2011 (H3N2)	0	2	7	0	0	3	0	3	0	<b>15</b>
B (lineage not determined)	3	64	31	13	1	1	0	11	6	<b>130</b>
B/Wisconsin/1/2010-like	0	6	3	2	0	21	0	0	4	<b>36</b>
<b>Total</b>	<b>10</b>	<b>122</b>	<b>69</b>	<b>19</b>	<b>1</b>	<b>27</b>	<b>2</b>	<b>15</b>	<b>12</b>	<b>277</b>

**Table 3. DHB codes and Descriptions**

DHB code	DHB
NL	Northland
WM	Waitemata
AK	Auckland
CM	Counties Manukau
WK	Waikato
LS	Lakes
BP	Bay of Plenty
TW	Tairāwhiti
TK	Taranaki
HB	Hawke's Bay
WG	Whanganui
MC	MidCentral
WR	Wairarapa
HU	Hutt Valley
CC	Capital and Coast
NM	Nelson Marlborough
WC	West Coast
CB	Canterbury
SC	South Canterbury
SN	Southern

Compiled by:

**Liza Lopez**

Health Intelligence Team  
ESR Kenepuru Science Centre  
PO Box 50 348, Porirua

T: 04 914 0647 F: 04 978 6690 E: [liza.lopez@esr.cri.nz](mailto:liza.lopez@esr.cri.nz)

**Dr. Sue Huang**

WHO National Influenza Centre  
ESR Wallaceville Science Centre  
PO Box 40158, Upper Hutt